

WAAS CH 93514 W27A	APP CRS 272°	Rwy Idg 3401 TDZE 238 Apt Elev 244
----------------------------------------	------------------------	---------------------------------------------------------------

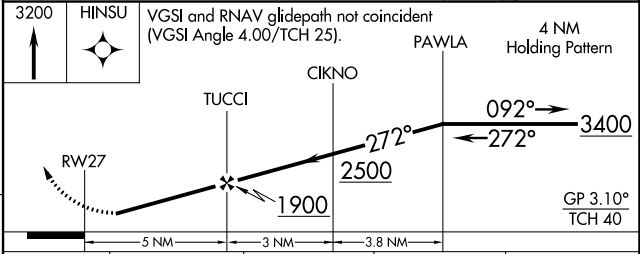
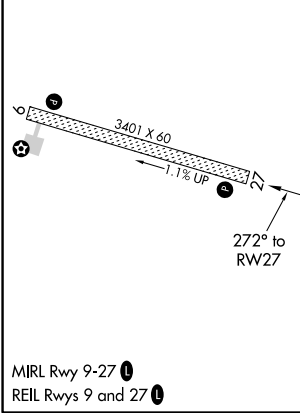
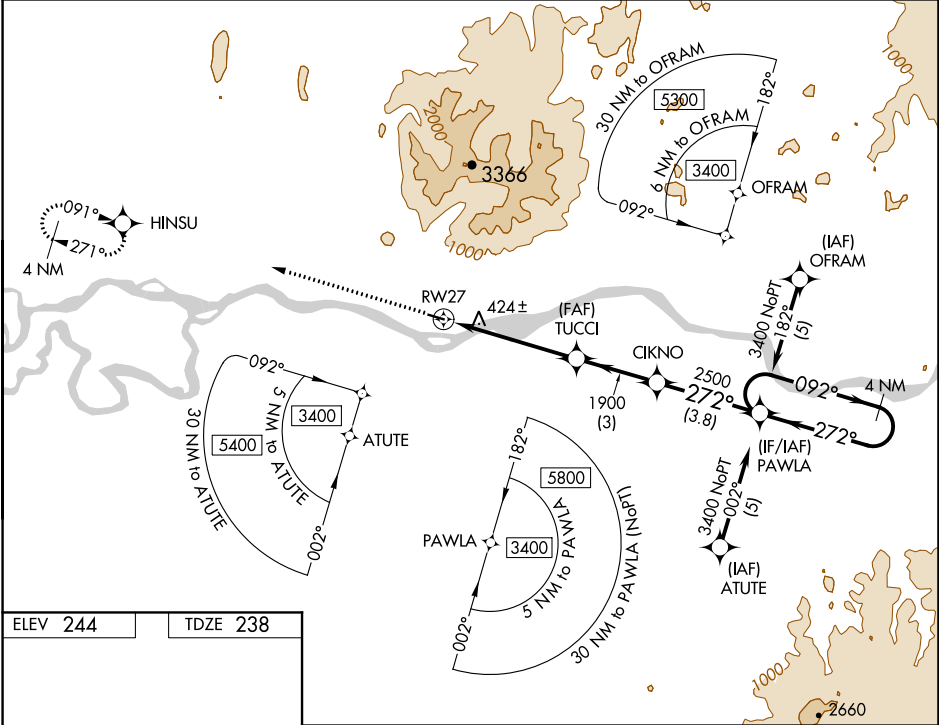
RNAV (GPS) RWY 27

CHUATHBALUK (9A3) (PACH)

⚠ Circling NA north of Rwy 9-27. DME/DME RNP-0.3 NA. Visibility reduction by helicopters NA. Use Aniak altimeter setting; when not received, use Kalskag altimeter setting and increase all DA 58 feet and MDA 60 feet and increase LNAV and Circling Cats A and C visibility ¼ mile.

MISSED APPROACH: Climb to 3200 direct HINSU and hold.

ANCHORAGE CENTER 118.15 251.05	CTAF 122.9
------------------------------------------	----------------------



CATEGORY	A	B	C	D
LPV DA	759-2 521 (600-2)			NA
LNAV MDA	1100-1 862 (900-1)	1100-1¼ 862 (900-1¼)	1100-2½ 862 (900-2½)	NA
CIRCLING	1100-1 856 (900-1)	1100-1¼ 856 (900-1¼)	1100-2½ 856 (900-2½)	NA

AK, 31 DEC 2020 to 25 FEB 2021

AK, 31 DEC 2020 to 25 FEB 2021