

**ST MICHAEL** (SMK)(PAMK) 2 W UTC-9(-8DT) N63°29.40' W162°06.62'  
 98 B NOTAM FILE OME  
 RWY 02-20: 4001X75 (GRVL) MIRL 0.8% up SW  
 RWY 02: Brush.

**SERVICE:** LGT ACTIVATE MIRL Rwy 02-20 —CTAF.

**AIRPORT REMARKS:** Unattended. Condition not monitored, recommend visual inspection prior to ldg. Rwy 02-20 slopes up northeast to southwest, Rwy 02 thld 32' higher. Reindeer herds invof arpt Jun-Oct. Cold temperature restricted airport. Altitude correction required at or below -37C.

**AIRPORT MANAGER:** (907) 625-1025

**WEATHER DATA SOURCES:** AWOS-3P 119.275 (907) 923-6480. (WX CAM)

**COMMUNICATIONS:** CTAF 122.8

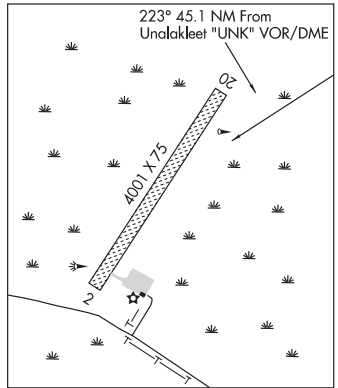
UNALAKLEET RCO 122.3 (NOME RADIO)

Ⓡ ANCHORAGE CENTER APP/DEP CON 135.7

**RADIO AIDS TO NAVIGATION:** NOTAM FILE UNK.

UNALAKLEET (H) VOR/DME 116.9 UNK Chan 116 N63°53.52' W160°41.06' 223° 45.1 NM to fld. 436/15E.

**COMM/NAV/WEATHER REMARKS:** For a toll free call to Nome FSS dial 1-800-478-8400. For a toll free call to Fairbanks FSS dial 1-866-248-6516.



**BETHEL**  
 H-1A, 2I, L-3C  
 IAP

**ST PAUL ISLAND** (SNP)(PASN) 3 NE UTC-9(-8DT) N57°09.98' W170°13.35'  
 66 B NOTAM FILE SNP

RWY 18-36: H6500X150 (ASPH-GRVD) HIRL

RWY 18: MALSF. PAPI(P4R)—GA 3.0° TCH 46'. Road.

RWY 36: MALSF. PAPI(P4L)—GA 3.0° TCH 52'. Fence. Rgt tfc.

**SERVICE:** FUEL JET A LGT ACTIVATE MALSF Rwy 18 and Rwy 36; PAPI Rwy 18 and Rwy 36; HIRL Rwy 18-36—CTAF.

**AIRPORT REMARKS:** Unattended. 3 wind turbines approx 100' tall, 1/4 mile southwest of Rwy 36 apch end. 625' lgtd twr one mile southwest. 45' twr 350' west and 1000' north thld Rwy 36 lgtd. Rwy 18-36 1000' safety area on north and south end. Pilots are requested to avoid flights blw 1000' AGL from May 14 through September 14 in those areas of St. Paul Island with active bird populations, and flts blw 1000' AGL from September 14 through December 14 in those areas of St. Paul Island with coastal seal rookeries. NWS weather balloon launch facility located on airport, see inside back cover for operation details.

**AIRPORT MANAGER:** (907) 581-1786

**WEATHER DATA SOURCES:** ASOS 135.75 (907) 546-2324. National weather service observers are avbl 24 hrs to augment automated weather on freq 122.0. (WX CAM)

**COMMUNICATIONS:** CTAF 122.3

RCO 122.45 (KENAI FSS)

ANCHORAGE CENTER APP/DEP CON 119.1 339.8

**RADIO AIDS TO NAVIGATION:** NOTAM FILE SNP.

NDB/DME (HW) 314 SPY Chan 36 N57°09.42' W170°13.98' at fld. 31/10E.  
 range 150 mi

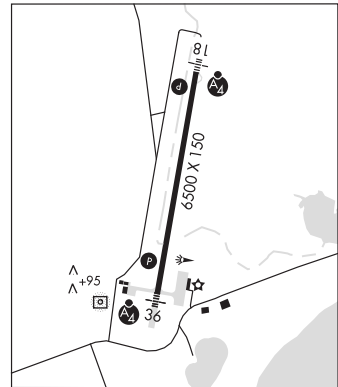
DME portion unusable:

015°-035° byd 15 NM blo 9,000'

215°-280° byd 25 NM blo 8,000' and 280-015 byd 20 NM blo 9,000'

ILS 109.9 I-PAU Rwy 36. Class IE. LOC Rwy 36 unusable byd 25° left and right of course.

**COMM/NAV/WEATHER REMARKS:** For a toll free call to Kenai FSS dial 1-866-864-1737.



**DUTCH HARBOR**  
 H-2I, L-2I, 3B  
 IAP