

**CABOOL MEML** (TVB)(KTVB) 1 NE UTC-6(-5DT) N37°07.95' W92°05.04'

1220 B NOTAM FILE COU

**RWY 03-21:** H3002X60 (ASPH-AFSC) S-4 MIRL 0.4% up SW

**RWY 03:** Thld dsplcd 190'. Road. Rgt tfc.

**RWY 21:** Trees.

**SERVICE:** FUEL 100LL, MOGAS LGT Dusk-Dawn. ACTIVATE MIRL Rwy 03-21—CTAF. Bcn located 0.9 of mile W/NW of arpt on top of water twr.

**AIRPORT REMARKS:** Unattended. For fuel call phone numbers posted at terminal. Ultralight activity on and invof arpt. Birds invof rwy. Rwy 03-21 markings faded.

**AIRPORT MANAGER:** 417-962-3136

**COMMUNICATIONS:** CTAF 122.9

**KANSAS CITY CENTER APP/DEP CON** 128.35

**CLEARANCE DELIVERY PHONE:** For CD ctc Kansas City ARTCC at 913-254-8508.

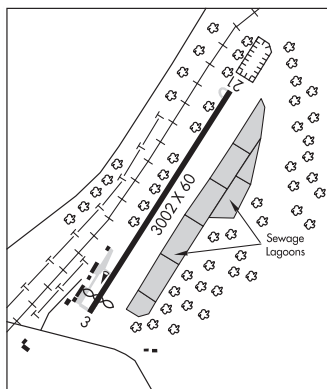
**RADIO AIDS TO NAVIGATION:** NOTAM FILE COU.

**MAPLES (L) VORTAC** 113.4 MAP Chan 81 N37°35.45' W91°47.31' 201° 30.9 NM to fld. 1374/6E.

**KANSAS CITY**

**L-16G**

**IAP**



## CAHOKIA/ST LOUIS

**ST LOUIS DOWNTOWN** (CPS)(KCPS) 1 E UTC-6(-5DT) N38°34.22' W90°09.31'

413 B LRA ARFF Index—See Remarks NOTAM FILE CPS

**RWY 12R-30L:** H7002X150 (ASPH-GRVD) S-65, D-95, 2S-160,

2D-175 PCN 48 F/D/X/T HIRL

**RWY 12R:** REIL. PAPI(P4L)—GA 3.0° TCH 49'. Tree. Rgt tfc.

**RWY 30L:** MALSR. PAPI(P4L)—GA 3.0° TCH 53'. Pole.

**RWY 12L-30R:** H5301X75 (CONC) S-30, D-30 PCN 10 F/D/X/T MIRL

**RWY 12L:** REIL. Tree.

**RWY 30R:** REIL. Tree. Rgt tfc.

**RWY 05-23:** H2799X75 (ASPH) S-12 PCN 11 R/C/W/T MIRL

**RWY 05:** Tree.

**RWY 23:** Tower.

### RUNWAY DECLARED DISTANCE INFORMATION

**RWY 05:** TORA-2799 TODA-2799 ASDA-2799 LDA-2799

**RWY 12L:** TORA-5300 TODA-5300 ASDA-5300 LDA-5300

**RWY 12R:** TORA-7002 TODA-7002 ASDA-7002 LDA-7002

**RWY 23:** TORA-2799 TODA-2799 ASDA-2799 LDA-2799

**RWY 30L:** TORA-7002 TODA-7002 ASDA-7002 LDA-7002

**RWY 30R:** TORA-5300 TODA-5300 ASDA-5300 LDA-5300

**SERVICE:** S4 FUEL 100LL, JET A OX 1 LGT ACTIVATE MALSR Rwy 30L when twr clsd—CTAF. REIL Rwy 30R—CTAF. HIRL Rwy 12R-30L preset on med ints when twr clsd. MIRL Rwy 12L-30R not avbl when twr clsd.

**AIRPORT REMARKS:** Attended continuously. Migratory waterfowl on and invof arpt. Be alert: intensive student training and helicopter operations. Rwy 12R-30L 2D-200 with PPR. Class IV, ARFF Index A. Clsd to sched ACR opr gtr than 9 pax seats. Unsched ACR ops gtr than 30 pax seats rqr 12 hr PPR. Mon-Sun (1300-0300Z) other times by req 618-337-6060. After hrs ctc 618-646-8263. Rwy 05-23 not avbl for unscheduled acr at least 31 pasgr seats excp taxi. Rwy 12L-30R not avbl for unscheduled acr at least 31 pasgr seats excp taxi. All twys exc Twy A4 and Twy B4 PPR acft over 120,000 lbs. Twy B2 south 400' clsd between Twy B and Twy B1.

**AIRPORT MANAGER:** 618-337-6060

**WEATHER DATA SOURCES:** ASOS (618) 332-0001 LAWRS.

**COMMUNICATIONS:** CTAF 119.925 ATIS 121.45 UNICOM 122.95

Ⓡ **SAINT LOUIS APP/DEP CON** 123.7

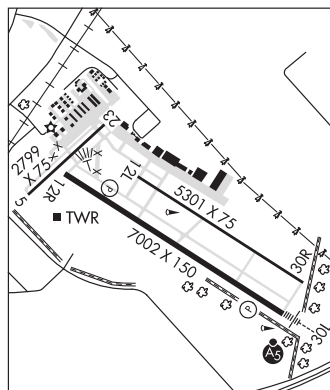
**DOWNTOWN TOWER** 119.925 (1230-0400Z) **GND CON** 121.8 **CLNC DEL** 118.275 (121.8 when twr clsd)

**AIRSPACE:** CLASS D svc 1230-0400Z; other times CLASS G.

**ST LOUIS**

**H-5D, L-27C, A**

**IAP, AD**



**CONTINUED ON NEXT PAGE**

## CONTINUED FROM PRECEDING PAGE

RADIO AIDS TO NAVIGATION: NOTAM FILE STL.

TROY (L) VORTACW 116.0 TOY Chan 107 N38°44.35' W89°55.12' 224° 15.0 NM to fld. 576/4E.

TACAN AZIMUTH unusable:

255°-270°

300°-310°

ACORE NDB (LOMW) 350 CP N38°31.19' W90°03.56' 304° 5.4 NM to fld. 550/OE. NOTAM FILE CPS.

ILS 109.1 I-CPS Rwy 30L. Class IA. LOM ACORE NDB. LOC unmonitored when ATCT closed. LOC unusable byd 14° rgt of course. OM unmonitored when ATCT closed.

COMM/NAV/WEATHER REMARKS: Emerg frequency 121.5 not avbl at twr.

**CAMDENTON MEML—LAKE RGNL** (OZS)(KOZS) 3 SE UTC-6(-5DT) N37°58.44' W92°41.47'

KANSAS CITY

1062 B NOTAM FILE OZS

L-16G

RWY 15-33: H4000X75 (ASPH) S-12.5 MIRL

IAP

RWY 15: REIL. PAPI(P4L)—GA 3.0° TCH 41'.

RWY 33: REIL. PAPI(P4L)—GA 3.0° TCH 40'.

SERVICE: S4 FUEL 100LL, JET A+ OX4 LGT ACTIVATE MIRL Rwy 15-33, REIL Rwy 15 and Rwy 33, PAPI Rwy 15 and Rwy 33—CTAF.

AIRPORT REMARKS: Attended Oct-Mar 1400-2300Z‡, Apr-Sep 1400-0100Z‡. When landing Rwy 33, be alert to possible low level wind shear when winds are out of east or west. Ultralight activity on and infov arpt. Wildlife on and infov arpt.

AIRPORT MANAGER: 573-346-0300

WEATHER DATA SOURCES: AWOS-3 120.225 (573) 317-0412.

COMMUNICATIONS: CTAF/UNICOM 122.8

Ⓜ MIZOU APP/DEP CON 124.1

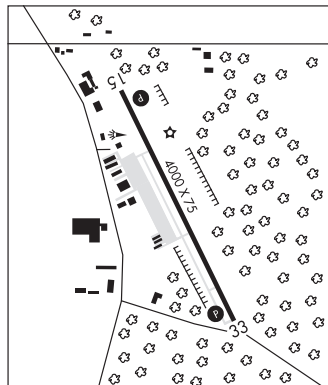
CLEARANCE DELIVERY PHONE: For CD ctc Mizzou Apch at

417-868-5620/5619.

RADIO AIDS TO NAVIGATION: NOTAM FILE COU.

SUNSHINE (L) VORW/DME 108.4 SHY Chan 21 N38°02.44'

W92°36.14' 227° 5.8 NM to fld. 932/OE.



**CAMERON MEML** (EZZ)(KEZZ) 2 SW UTC-6(-5DT) N39°43.65' W94°16.58'

KANSAS CITY

1040 B NOTAM FILE COU

L-27A

RWY 17-35: H4000X75 (CONC) S-30 MIRL 0.4% up N

IAP

RWY 17: REIL. PAPI(P4L)—GA 3.0° TCH 21'.

RWY 35: REIL. PAPI(P4L)—GA 3.0° TCH 22'.

SERVICE: FUEL 100LL LGT MIRL Rwy 17-35, PAPI Rwy 17 and Rwy 35, REIL Rwy 17 and Rwy 35 opr dusk-0600Z‡, after 0600Z‡ ACTIVATE and incntrs—CTAF.

AIRPORT REMARKS: Attended Mon-Fri 1500-2300Z‡, Sat irregularly.

Automated self fuel avbl 24 hrs.

AIRPORT MANAGER: 816-632-2423

WEATHER DATA SOURCES: AWOS-3PT 121.05 (816) 933-2124.

COMMUNICATIONS: CTAF/UNICOM 122.8

Ⓜ KANSAS CITY APP/DEP CON 118.4

CLNC DEL 121.6

CLEARANCE DELIVERY PHONE: For CD ctc Kansas City Apch at 816-329-2710.

RADIO AIDS TO NAVIGATION: NOTAM FILE STJ.

ST JOSEPH (H) VORTACW 115.5 STJ Chan 102 N39°57.63'

W94°55.51' 107° 33.1 NM to fld. 1159/8E.

