

WILKES-BARRE/SCRANTON INTL (AVP)(KAVP) 5 SW UTC-5(-4DT) N41°20.31' W75°43.40'

NEW YORK
H-101, 121, L-30K, 33A
IAP, AD

962 B LRA ARFF Index—See Remarks NOTAM FILE AVP

RWY 04-22: H7502X150 (ASPH-GRVD) S-133, D-173, 2D-300

PCN 45 F/A/X/T HIRL 0.7% up SW

RWY 04: MALSR. PAPI(P4R)—GA 3.0° TCH 58'. RVR-TR

RWY 22: REIL. VASI(V4L)—GA 3.0° TCH 54'. RVR-TR Tower. Rgt tfc.

RWY 10-28: H4300X150 (ASPH-GRVD) S-58, D-80, 2S-101,

2D-125 MIRL 0.3% up E

RWY 10: REIL. PAPI(P2L)—GA 3.0° TCH 43'. Rgt tfc.

RWY 28: REIL. Trees. Rgt tfc.

RUNWAY DECLARED DISTANCE INFORMATION

RWY 04: TORA-7501 TODA-7501 ASDA-7501 LDA-7501

RWY 10: TORA-4300 TODA-4300 ASDA-4300 LDA-4300

RWY 22: TORA-7501 TODA-7501 ASDA-7501 LDA-7501

RWY 28: TORA-4300 TODA-4300 ASDA-4300 LDA-4300

ARRESTING GEAR/SYSTEM

RWY 04: EMAS

RWY 22: EMAS

SERVICE: S3 FUEL 100LL, JET A OX 2, 4

AIRPORT REMARKS: Attended continuously. Deer and birds on and in/ovf

arpt. Rwy 04-22 precipitous drop-off each rwy end. Class I, ARFF

Index B. Index C ARFF equipment avbl upon request call 570-602-2040. Unlgt'd twr 1130' 1.3 miles east AER 28, unlgt'd twr 1463' 1.7 miles east AER 28, unlgt'd twr 1652' 2.4 miles east AER 28. Rwy 28 unlgt'd high terrain trees, 1155' MSL 0.91 miles east AER 28, 1463' MSL 1.49 miles east-southeast AER 28, 1667' MSL 2.25 miles east AER 28, 1920' MSL 2.84 miles east AER 28. For FBO svcs 0500-1000Z± local Mon-Fri and 0200-0500Z± local Sat-Sun call (570) 457-4485. Ldg fee. Flight Notification Service (ADCUS) avbl.

AIRPORT MANAGER: 570-602-2000

WEATHER DATA SOURCES: ASOS 111.6 (570) 655-0748.

COMMUNICATIONS: UNICOM 122.95 ATIS 111.6

RCO 122.2 (WILLIAMSPORT RADIO)

Ⓡ **APP/DEP CON** 120.95 (280°-100°) 126.3 (101°-279°)

TOWER 120.1 **GND CON** 121.9

AIRSPACE: CLASS D.

TRSA svc ctc **APP CON** within 20 NM

RADIO AIDS TO NAVIGATION: NOTAM FILE AVP.

(L) **VORTACW** 111.6 LVZ Chan 53 N41°16.37' W75°41.37' 349° 4.2 NM to fld. 2118/10W.

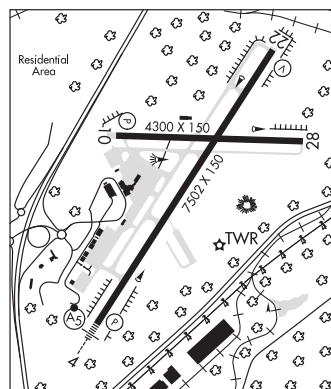
VOR unusable:

290°-305° byd 15 NM blo 6,000'

ILS/DME 109.9 I-AVP Chan 36 Rwy 04. Localizer offset angle 001° 46 min. LOC unusable byd 20° right of course.

DME unusable byd 20° right of course. DME also serves izk ILS.

ILS/DME 109.9 I-IZK Chan 36 Rwy 22. Class IT. DME unusable byd 20° right of course. LOC unusable byd 28° left of course.



WILLIAM T PIPER MEML (See LOCK HAVEN on page 286)

WILLIAMSBURG

COVE VALLEY (6G6) 2 W UTC-5(-4DT) N40°27.27' W78°14.28'

DETROIT

1156 NOTAM FILE AOO

RWY 04-22: 2750X100 (TURF)

RWY 04: Thld dspld 285'. Road. Rgt tfc.

RWY 22: Thld dspld 286'. Brush.

SERVICE: S4

AIRPORT REMARKS: Attended Mon-Fri 1300-2200Z±, Sat-Sun irregularly. Arpt safety briefing rqrd before ldg 814-832-2694.

Deer and occasional geese on and in/ovf arpt. Turf soft during spring and after rains, no ops when rwy is soft or snow

covered. Rwy 04-22 marked with white boundary markers. Rwy 04 thld dspld marked with white barrels. Rwy 22 thld dspld marked with white barrels.

AIRPORT MANAGER: 814-832-2694

COMMUNICATIONS: CTAF 122.9

CLEARANCE DELIVERY PHONE: For CD ctc Johnstown Apch at 814-532-5960, when Apch clsd ctc Cleveland ARTCC at 440-774-0234.