

**PULLMAN/MOSCOW RGNL** (PUW)(KPUW) 3 NE UTC-8(-7DT) 2567 B Class I, ARFF Index B NOTAM FILE PUW

N46°44.50' W117°06.70'

**SEATTLE**  
H-1C, L-13B  
IAP, AD

**RWY 05-23:** H7100X150 (ASPH-GRVD) S-120, D-239, 2D-385 PCN 68 F/C/X/T HIRL

**RWY 05:** MALSR. PAPI(P4L)—GA 3.0° TCH 49'. RVR-T Fence.

**RWY 23:** REIL. PAPI(P4R)—GA 3.4° TCH 58'. RVR-R Ground.

**RUNWAY DECLARED DISTANCE INFORMATION**

**RWY 05:** TORA-7100 TODA-7100 ASDA-7100 LDA-7100

**RWY 23:** TORA-7100 TODA-7100 ASDA-7100 LDA-7100

**SERVICE:** S4 FUEL 100LL, JET A LGTACTIVATE MALSR Rwy 05; REIL Rwy 23; PAPI Rwy 05 and 23; HIRL Rwy 05-23—CTAF.

**AIRPORT REMARKS:** Attended 1600-0200Z. CLOSED to unscheduled air carrier ops with more than 30 pax seats exc PPR call arpt mgr 509-338-3223. Parachute Jumping. Non-paved areas soft. No parking between rwy and twy and within 30' of twy to the northwest. No non-paved acft ops auth. Ldg fee for all comrl acft and all itinerant acft over 7,000 lbs. Fuel: Mogas on fld—509-332-6569.

**AIRPORT MANAGER:** 509-338-3223

**WEATHER DATA SOURCES:** ASOS 135.675 (509) 334-3222.

**COMMUNICATIONS:** CTAF/UNICOM 122.8

RCO 122.6 (SEATTLE RADIO)

Ⓡ SEATTLE CENTER APP/DEP CON 123.95

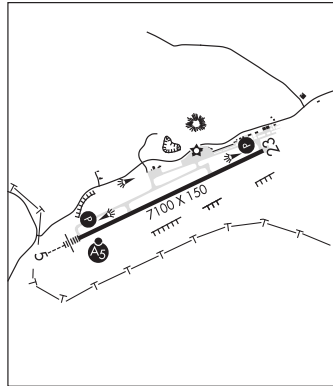
**CLEARANCE DELIVERY PHONE:** For CD if una to ctc on FSS freq, ctc Seattle ARTCC at 253-351-3694.

**AIRSPACE:** CLASS E svc 1400-0600Z Mon-Fri, 1700-0000Z Sat, 1900-0600Z Sun; other times CLASS G.

**RADIO AIDS TO NAVIGATION:** NOTAM FILE PUW.

(L) VORW/DME 109.0 PUW Chan 27 N46°40.45' W117°13.41' 029° 6.1 NM to fld. 2772/20E. DME unmonitored.

ILS/DME 110.35 I-PUW Chan 40(Y) Rwy 05. Class IE.



**REED RANCH** (See YELLOW PINE on page 74)

**REXBURG-MADISON CO** (RXE)(KRXE) 1 NW UTC-7(-6DT) 4862 B NOTAM FILE RXE

N43°50.04' W111°48.31'

**SALT LAKE CITY**  
L-11D  
IAP

**RWY 17-35:** H4204X75 (ASPH) S-30 MIRL

**RWY 17:** VASI(V4R). Thld dsplcd 302'. Trees.

**RWY 35:** REIL. VASI(V4L)—GA 3.0° TCH 40'. Tree.

**RUNWAY DECLARED DISTANCE INFORMATION**

**RWY 17:** TORA-4200 TODA-4200 ASDA-4200 LDA-3900

**RWY 35:** TORA-4200 TODA-4200 ASDA-3900 LDA-3900

**SERVICE:** S4 FUEL 100LL, JET A OX3 LGTACTIVATE REIL Rwy 35, VASI Rwy 35, MIRL 17-35—CTAF. VASI Rwy 17 opr continuously.

**AIRPORT REMARKS:** Attended Mon-Sat 1500-0100Z.

**AIRPORT MANAGER:** 208-356-6600

**WEATHER DATA SOURCES:** ASOS 135.075 (208) 356-0986.

**COMMUNICATIONS:** CTAF/UNICOM 122.8

Ⓡ SALT LAKE CENTER APP/DEP CON 128.35

**CLEARANCE DELIVERY PHONE:** For CD ctc Salt Lake ARTCC at 801-320-2568.

**RADIO AIDS TO NAVIGATION:** NOTAM FILE IDA.

IDAHO FALLS (H) VORW/DME 113.85 IDA Chan 85(Y) N43°31.14' W112°03.84' 016° 22.0 NM to fld. 4724/15E.

