

**GREENWOOD—LEFLORE** (GWO)(KGWO) 6 E UTC-6(-5DT) N33°29.60' W90°05.20'

162 B NOTAM FILE GWO Mon Airport

**RWY 18-36:** H6501X150 (ASPH) S-100, D-176, 2S-175, 2D-300, 2D/2D2-560 HIRL

**RWY 18:** MALSR.

**RWY 36:** REIL. PAPI(P4L)—GA 3.0° TCH 50'.

**RWY 05-23:** H5011X150 (ASPH) S-30 MIRL 0.3% up NE

**RWY 05:** VASI(V4L)—GA 3.0° TCH 33'. Trees.

**RWY 23:** REIL. PVASI(P5IR). Trees.

**SERVICE:** S4 FUEL 100LL, JET A, A1+ LGT When twr clsd ACTIVATE MIRL Rwy 05-23, MALSR Rwy 18, HIRL Rwy 18-36, PAPI Rwy 36—CTAF. VASI Rwy 05 opr continuously. Rwy 05-23 edge intensity lgts OTS indef, NOTAM has been issued.

**AIRPORT REMARKS:** Attended continuously. CLOSED 2 days each at Thanksgiving and Christmas and one day for New Year's. Fuel avbl Mon-Fri 1500-0000Z†, Sat-Sun 1600-2200Z†. Fee for fuel after hrs call 662-392-3988 or 662-392-8899 or 662-455-5530 for svc after hrs. Powerplant and airframe repairs in emergency or by appointment. Arpt manager limits gross weight Rwy 05-23 to S-42, D-60 in unusual situations. Pilots must provide their own tiedown ropes.

**AIRPORT MANAGER:** 662-453-1526

**WEATHER DATA SOURCES:** ASOS 119.975 (662) 453-3304.

**COMMUNICATIONS:** CTAF 118.35 UNICOM 122.95

RCO 122.2 (GREENWOOD RADIO)

Ⓡ MEMPHIS CENTER APP/DEP CON 132.5

TOWER 118.35 (1400-0000Z†) GND CON 125.55 CLNC DEL 125.55

**CLEARANCE DELIVERY PHONE:** For CD if una to ctc on FSS freq, ctc Memphis ARTCC at 901-368-8453.

**AIRSPACE:** CLASS D svc 1400-0000Z†; other times CLASS E.

**RADIO AIDS TO NAVIGATION:** NOTAM FILE GWO.

**SIDON (H) VORTAC** 114.7 SQS Chan 94 N33°27.83' W90°16.64' 077° 9.7 NM to fld. 127/3E.

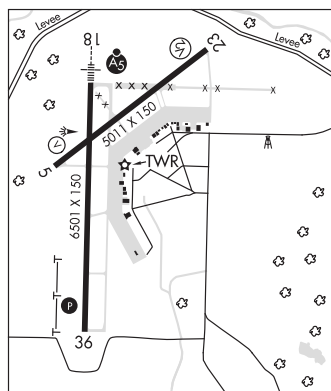
**TEOCK NDB (LOMW)** 349 GW N33°35.52' W90°05.06' 182° 5.9 NM to fld. 140/1W.

ILS 111.3 I-GWO Rwy 18. Class IT. LOM TEOCK NDB.

MEMPHIS

H-61, L-18G

IAP, AD



**GRENADA MUNI** (GNF)(KGNF) 3 N UTC-6(-5DT) N33°49.95' W89°47.89'

208 B NOTAM FILE GWO

**RWY 13-31:** H7000X150 (ASPH) S-60, D-200, 2S-175, 2D-300

MIRL

**RWY 13:** MALSR. VASI(V4L)—GA 3.0° TCH 52'.

**RWY 31:** VASI(V4L)—GA 3.0° TCH 56'. Trees.

**RWY 04-22:** H4998X99 (ASPH) S-60, D-200, 2S-175, 2D-300

**RWY 04:** Trees.

**RWY 22:** Thld dspcd 272'. Road.

**SERVICE:** FUEL 100LL, JET A

**AIRPORT REMARKS:** Attended Mon-Fri 1400-2300Z†, Sat-Sun on call. For fuel call 662-227-8402 or 662-230-3646; aft hrs call 662-699-9460. Aerobatic acct dalgt hrs; 7000 ft and blw within 3 NM of arpt. Birds and deer invof arpt. Extsv agriculture ops invof arpt SR-SS between Mar-Oct. Rwy 13 and 31 200' by 150' asph ovrn avbl. Rwy 04-22 markings faded. Rwy 04-22 asphalt cracked and has depressions. Rwy 13-31 mks faded.

**AIRPORT MANAGER:** 662-227-3457

**WEATHER DATA SOURCES:** AWOS-3PT 118.025 (662) 227-3407.

**COMMUNICATIONS:** CTAF/UNICOM 122.8

MEMPHIS CENTER APP/DEP CON 128.5

**CLEARANCE DELIVERY PHONE:** For CD ctc Memphis ARTCC at 901-368-8453.

**RADIO AIDS TO NAVIGATION:** NOTAM FILE GWO.

**SIDON (H) VORTAC** 114.7 SQS Chan 94 N33°27.83' W90°16.64' 044° 32.6 NM to fld. 127/3E.

MEMPHIS

H-61, L-18G

IAP

