

**TYLER POUNDS RGNL** (TYR)(KTYR) 3 W UTC-6(-5DT) N32°21.21' W95°24.18'**DALLAS-FT WORTH**

544 B Class I, ARFF Index B NOTAM FILE TYR

H-6I, L-17D

**RWY 04-22:** H8334X150 (CONC-GRVD) S-120, D-222, 2S-84,

IAP, AD

2T-223, 2D-357, 2D/D1-212, C5-342 HIRL

**RWY 04:** MALSR. PAPI(P4L)—GA 3.0° TCH 55'.**RWY 22:** REIL. PAPI(P4L)—GA 3.0° TCH 54'. Thld dsplcd 600'. Tree.**RWY 13-31:** H5200X150 (ASPH-GRVD) S-40, D-60, 2D-100 HIRL  
0.5% up SE**RWY 13:** Pole.**RWY 31:** VASI(V4L)—GA 3.0° TCH 54'. Road.**RWY 18-36:** H4832X150 (ASPH-GRVD) S-109, D-172, 2D-289  
MIRL**RWY 18:** Tree.**RWY 36:** Tree.**RUNWAY DECLARED DISTANCE INFORMATION****RWY 04:** TORA-8334 TODA-8334 ASDA-7748 LDA-7748**RWY 13:** TORA-5200 TODA-5200 ASDA-5200 LDA-5200**RWY 18:** TORA-4832 TODA-4832 ASDA-4832 LDA-4832**RWY 22:** TORA-8334 TODA-8334 ASDA-8334 LDA-7734**RWY 31:** TORA-5200 TODA-5200 ASDA-5200 LDA-5200**RWY 36:** TORA-4832 TODA-4832 ASDA-4832 LDA-4832**SERVICE:** S4 FUEL 100LL, JET A OX 1, 3 LGT When ATCT clsd actvt

MALSR Rwy 04; HIRL Rwy 04-22; MIRL Rwy 18-36; twy lgts—CTAF. HIRL Rwy 13-31 preset med instst, to incr instst actvt—CTAF. PAPI Rwy 04 and Rwy 22, VASI Rwy 31 opr consly. Rwy 22 VGSi unusbl byd 7 deg left and right of crs.

**AIRPORT REMARKS:** Attended 1100-0400Z†. Helicopters operating inbound or outbound to/from the downtown hospitals state intention on 123.075. West side passenger terminal ramp access rstd to air carrier. Noise abatement procedures in effect Call 903-590-3048. Conditions not monitored btn the hrs of 9:30 PM and 6:30 AM local.**AIRPORT MANAGER:** 903-531-2343**WEATHER DATA SOURCES:** ASOS (903) 535-9105 LAWR5.**COMMUNICATIONS:** CTAF 120.1 ATIS 126.25 UNICOM 122.95

RCO 122.3 (FORT WORTH RADIO)

Ⓡ LONGVIEW APP/DEP CON 128.75 (1200-0400Z†)

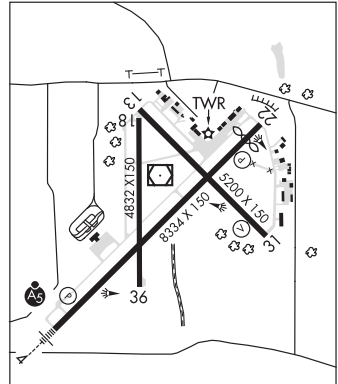
Ⓡ FORT WORTH CENTER APP/DEP CON 135.25 (0400-1200Z†)

TOWER 120.1 (1230-0330Z†) GND CON 121.9

**CLEARANCE DELIVERY PHONE:** For CD if una to ctc on FSS freq, ctc Fort Worth ARTCC at 817-858-7584.**AIRSPACE:** CLASS D svc 1230-0330Z†; other times CLASS G.**RADIO AIDS TO NAVIGATION:** NOTAM FILE TYR.

(T) VORW/DME 114.2 TYR Chan 89 N32°21.35' W95°24.21' at fld. 564/6E.

ILS/DME 111.95 I-TYR Chan 56(Y) Rwy 04. Class IC. Unmonitored when ATCT clsd. DME unusable byd 20° left of course.

**UPTON CO** (See MC CAMEY on page 357)**UVALDE****GARNER FLD** (UVA)(KUVA) 3 E UTC-6(-5DT) N29°12.68' W99°44.62'**SAN ANTONIO**

942 B NOTAM FILE UVA

H-7B, L-19B

**RWY 15-33:** H5256X100 (ASPH) S-30, D-40, 2D-40 MIRL 0.3% up NW

IAP

**RWY 15:** REIL. PAPI(P4L)—GA 3.0° TCH 36'. Trees.**RWY 33:** REIL. PAPI(P4L)—GA 3.0° TCH 35'.**SERVICE:** S4 FUEL 100LL, JET A OX 1, 2, 3, 4 LGT ACTVT MIRL Rwy 15-33—CTAF.**AIRPORT REMARKS:** Attended 1300-0100Z†. Self svc 100LL with major credit card. Turf strip 3300 ft X 75 ft parl to and east of Rwy 15-33 used by crop dusters only.**AIRPORT MANAGER:** 830-278-3315**WEATHER DATA SOURCES:** AWOS-3 124.175 (830) 278-8862.**COMMUNICATIONS:** CTAF/UNICOM 122.8

UVALDE RCO 122.5 (SAN ANGELO RADIO)

Ⓡ HOUSTON CENTER APP/DEP CON 134.95

**CLEARANCE DELIVERY PHONE:** For CD if una to ctc on FSS freq, ctc Houston ARTCC at 281-230-5622.**RADIO AIDS TO NAVIGATION:** NOTAM FILE ERV.

CENTER POINT (H) VORTAC 117.5 CSI Chan 122 N29°55.34' W99°12.87' 205° 50.8 NM to fld. 2079/8E.

UVALDE NDB (MHW) 281 UVA N29°10.66' W99°43.54' 328° 2.2 NM to fld. 7E. NOTAM FILE UVA.

**VALLEY INTL** (See HARLINGEN on page 314)