

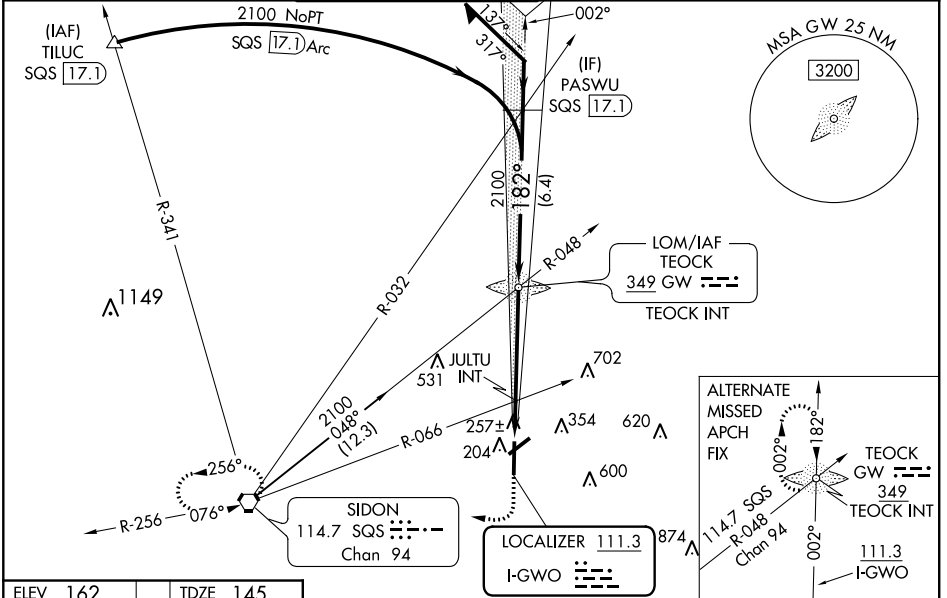
LOC I-GWO <b>111.3</b>	APP CRS <b>182°</b>	Rwy Idg TDZE Apt Elev	<b>6501</b> <b>145</b> <b>162</b>
---------------------------	------------------------	-----------------------------	---

**ILS or LOC RWY 18**  
GREENWOOD-LEFLORE (GWO)

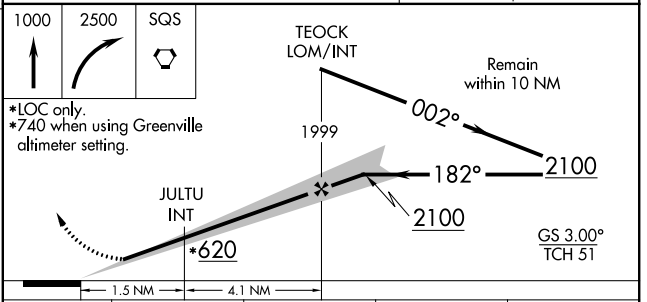
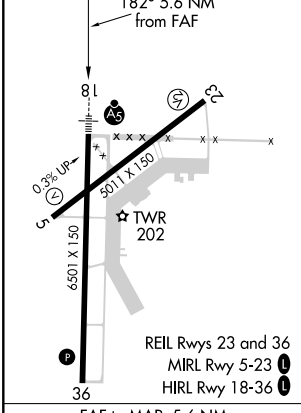
When local altimeter setting not received, use Greenville altimeter setting: increase DA to 580 feet and all visibilities ½ SM; increase all MDAs 120 feet and visibility S-LOC 18 Cat C/D ¼ SM and Circling Cat C ½ SM.  
 ▼ For inop ALS, increase S-LOC 18 Cat A/B visibility to 1 SM, and Cat C/D to ½ SM, and JULTU FIX minimums S-LOC 18 all Cats to 1 SM. For inop ALS when using Greenville altimeter setting, increase S-ILS 18 all Cats visibility to ½ SM, and S-LOC 18 Cat A/B to 1 SM, and JULTU FIX minimums S-LOC 18 Cat A/B to 1 SM, and Cat C/D to ½ SM. Circling Rwy 5, 23, 27 NA at night.  
 Rwy 18 helicopter visibility reduction below ¾ SM NA. Rwy 5, 23, 27 helicopter visibility reduction below 1 SM NA.

MALSRS  
  
 MISSED APPROACH:  
 Climb to 1000 then climbing right turn to 2500 direct SQS VORTAC and hold.

ASOS <b>119.975</b>	MEMPHIS CENTER <b>132.5 259.1</b>	GREENWOOD TOWER ★ <b>118.35 (CTAF) 0 367.6</b>	GND CON <b>125.55 373.4</b>	CLNC DEL <b>125.55</b>	UNICOM <b>122.95</b>
------------------------	--------------------------------------	---	--------------------------------	---------------------------	-------------------------



ELEV <b>162</b>	TDZE <b>145</b>
-----------------	-----------------



CATEGORY	A	B	C	D
S-ILS 18	471-¾ 326 (400-¾)			
S-LOC 18	620-¾	475 (500-¾)	620-1	475 (500-1)
<input checked="" type="checkbox"/> CIRCLING	760-1	598 (600-1)	1000-2 ½ 838 (900-2 ½)	1120-3 958 (1000-3)
JULTU FIX MINIMUMS (DUAL VOR RECEIVERS REQUIRED)				
S-LOC 18	520-¾ 375 (400-¾)			
<input checked="" type="checkbox"/> CIRCLING	760-1	598 (600-1)	1000-2 ½ 838 (900-2 ½)	1120-3 958 (1000-3)

SC-4, 25 FEB 2021 to 25 MAR 2021

SC-4, 25 FEB 2021 to 25 MAR 2021