

WAAS CH <b>69631</b> <b>W36A</b>	APP CRS <b>002°</b>	Rwy Idg TDZE Apt Elev	<b>6501</b> <b>142</b> <b>162</b>
--	------------------------	-----------------------------	---

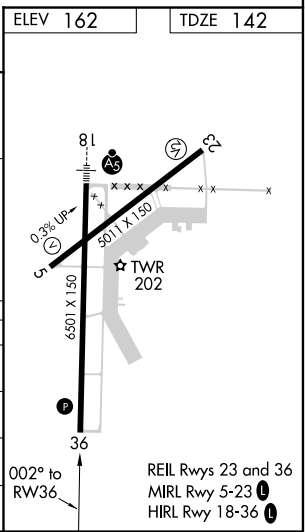
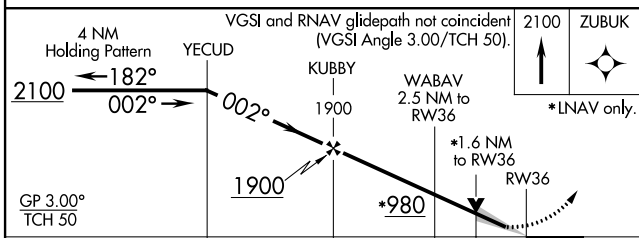
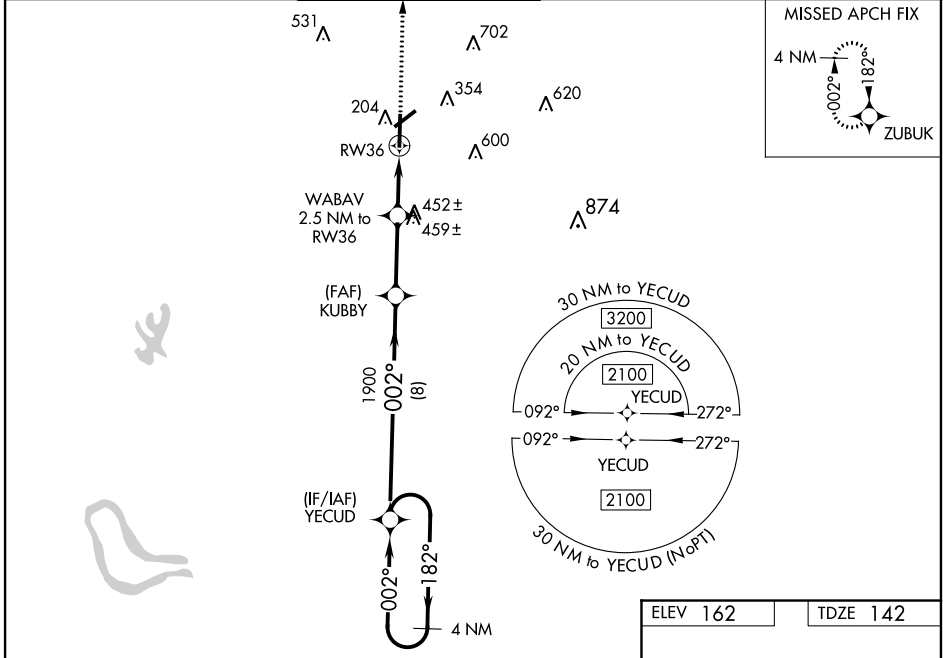
# RNAV (GPS) RWY 36

GREENWOOD-LEFLORE (GWO)

For uncompensated Baro-VNAV systems, LNAV/VNAV NA below -22°C (-8°F) or above 54°C (130°F).  
 DME/DME RNP-0.3 NA. VDP and Baro-VNAV NA when using Greenville altimeter setting. Rwy 5, 23, 27  
 helicopter visibility reduction below 1 SM NA. Circling Rwy 5, 23, 27 NA at night. When local altimeter  
 setting not received, use Greenville altimeter setting: increase LPV DA to 501 feet and visibility 1/2 SM,  
 LNAV/VNAV DA to 667 feet and visibility 3/8 SM; increase all MDAs 120 feet and visibility LNAV  
 Cat C/D 1/4 SM and Circling Cat C 1/2 SM.

**MISSED APPROACH:**  
 Climb to 2100 direct  
 ZUBUK and hold.

ASOS <b>119.975</b>	MEMPHIS CENTER <b>132.5 259.1</b>	<b>GREENWOOD TOWER *</b> <b>118.35 (CTAF) 0 367.6</b>	GND CON <b>125.55 373.4</b>	CLNC DEL <b>125.55</b>	UNICOM <b>122.95</b>
------------------------	--------------------------------------	--	--------------------------------	---------------------------	-------------------------



CATEGORY	A	B	C	D
LPV DA		392-3/4	250 (300-3/4)	
LNAV/VNAV DA		558-13/8	416 (400-13/8)	
LNAV MDA	700-1	558 (600-1)	700-13/8	558 (600-13/8)
CIRCLING	760-1	598 (600-1)	1000-2 1/2 838 (900-2 1/2)	1120-3 958 (1000-3)

SC-4, 25 FEB 2021 to 25 MAR 2021

SC-4, 25 FEB 2021 to 25 MAR 2021