

WAAS CH 63028 W27A	APP CRS 271°	Rwy Idg TDZE 430 Apt Elev 430	5198
--	------------------------	---	-------------

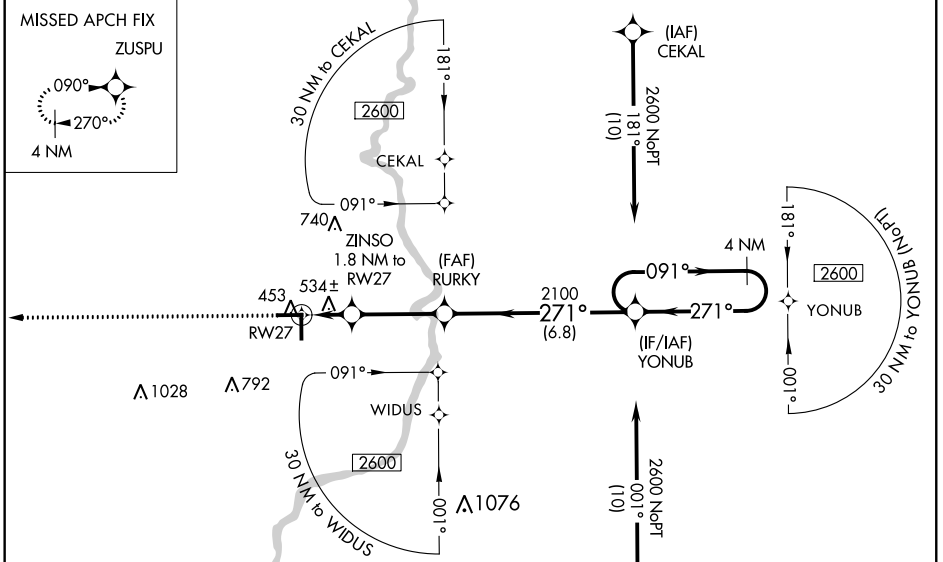
RNAV (GPS) RWY 27

LAWRENCEVILLE-VINCENNES INTL (L WV)

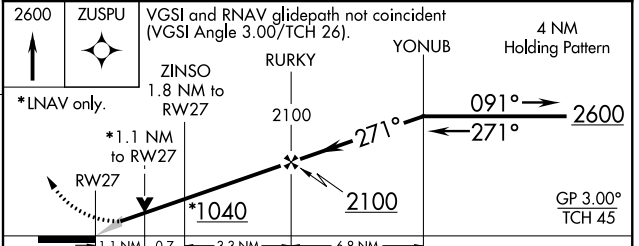
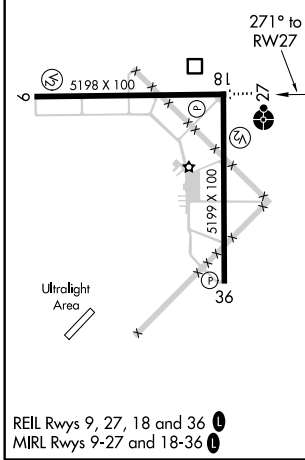
⚠ For uncompensated Baro-VNAV systems, LNAV/VNAV NA below -15°C (5°F) or above 41°C (105°F). DME/DME RNP-0.3 NA. Baro-VNAV and VDP NA when using Mount Carmel altimeter setting. When local altimeter setting not received use Mount Carmel altimeter setting and increase all DA 26 feet and all MDA 40 feet; increase LNAV/VNAV all Cats visibility 1/8 mile. Inop table does not apply to LNAV Cat C. For inop ODALS increase LNAV/VNAV all Cats visibility to 1 3/8 miles. For inop ODALS when using Mount Carmel altimeter setting increase LPV all Cats visibility to 7/8 mile, LNAV/VNAV all Cats visibility to 1 1/2 miles and LNAV Cats C and D visibility to 1 1/8 miles. Circling to Rwy 36 NA at night.

ODALS MISSED APPROACH: Climb to 2600 direct ZUSPU and hold.

ASOS 118.0	EVANSVILLE APP CON * 125.6 343.7	UNICOM 122.8 (CTAF)
----------------------	--	-------------------------------



ELEV 430	TDZE 430
----------	----------



CATEGORY	A	B	C	D
LPV DA		680-3/4	250 (300-3/4)	
LNAV/VNAV DA		832-1/4	402 (500-1/4)	
LNAV MDA	800-3/4	370 (400-3/4)	800-1	370 (400-1)
CIRCLING	880-1	450 (500-1)	900-1 1/2 470 (500-1 1/2)	980-2 550 (600-2)

EC-3, 25 FEB 2021 to 25 MAR 2021

EC-3, 25 FEB 2021 to 25 MAR 2021