

WAAS CH 93728 W09A	APP CRS 090°	Rwy ldg 5198 TDZE 428 Apt Elev 430
---------------------------------	------------------------	---

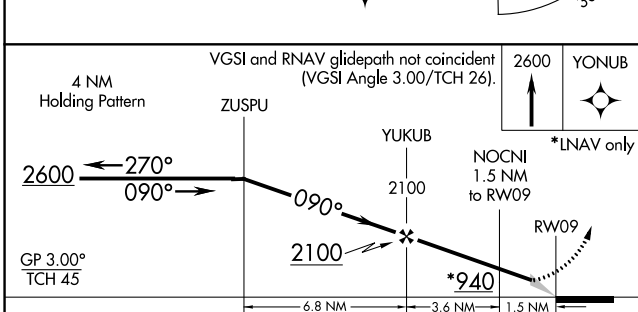
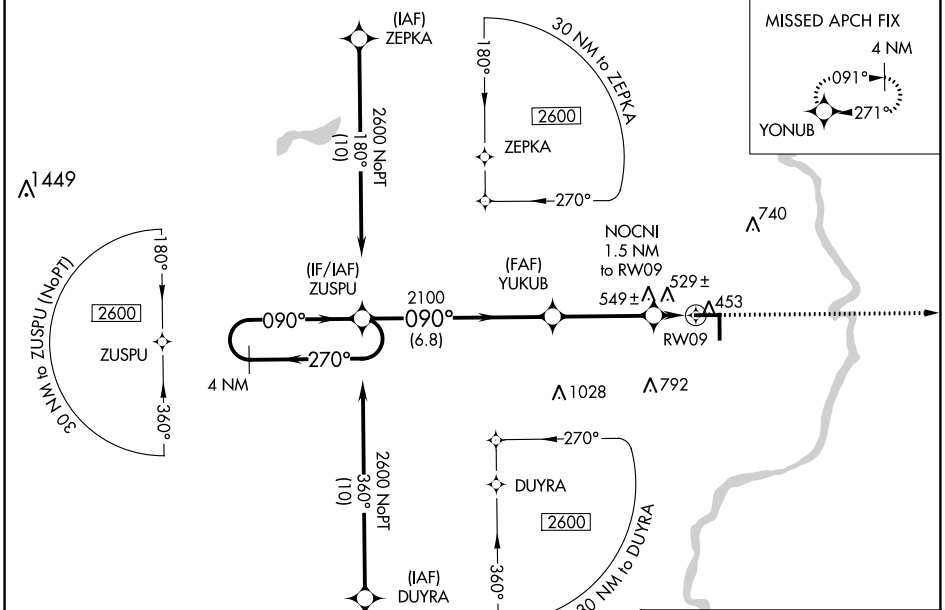
RNAV (GPS) RWY 9

LAWRENCEVILLE-VINCENNES INTL (LWV)

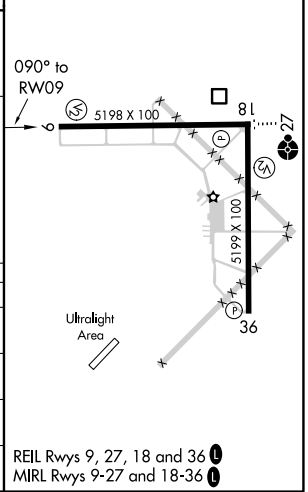
⚠ Baro-VNAV NA when using Mount Carmel altimeter setting. For uncompensated Baro-VNAV systems, LNAV/VNAV NA below -15°C (5°F) or above 41°C (105°F). DME/DME RNP-0.3 NA.
⚠ When local altimeter setting not received use Mount Carmel altimeter setting and increase all DA 26 feet and all MDA 40 feet: increase LPV all Cats, LNAV/VNAV all Cats, and LNAV Cat C/D visibilities 1/8 mile. Circling to Rwy 36 NA at night.

MISSED APPROACH:
Climb to 2600 direct YONUB and hold.

ASOS 118.0	EVANSVILLE APP CON * 125.6 343.7	UNICOM 122.8 (CTAF) 0
----------------------	--	---------------------------------



ELEV 430	TDZE 428
----------	----------



CATEGORY	A	B	C	D
LPV DA		678-3/4	250 (300-3/4)	
LNAV/VNAV DA		829-13/8	401 (400-13/8)	
LNAV MDA	820-1	392 (400-1)	820-13/8	392 (400-13/8)
CIRCLING	880-1	450 (500-1)	900-11/2	980-2
			470 (500-11/2)	550 (600-2)

REIL Rwy 9, 27, 18 and 36
MIRL Rwy 9-27 and 18-36

EC-3, 25 FEB 2021 to 25 MAR 2021

EC-3, 25 FEB 2021 to 25 MAR 2021