

LOC I-OPF 110.5	APP CRS 093°	Rwy Idg 8002
		TDZE 8
		Apt Elev 8

ILS or LOC RWY 9L

MIAMI-OPA LOCKA EXECUTIVE (OPF)

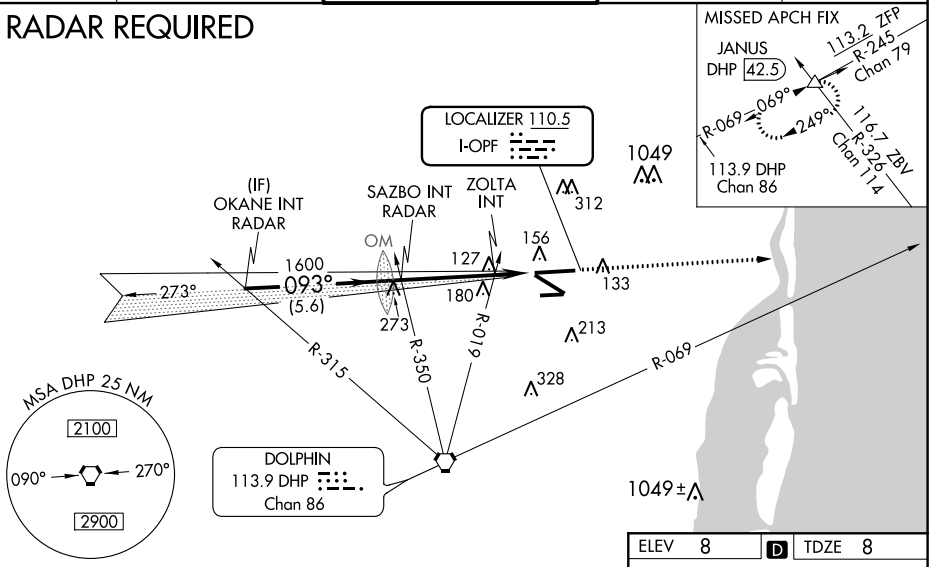
⚠ Inoperative table does not apply. Helicopter visibility reduction below 3/4 SM NA.
⚠ Caution: Lights on highway 0.7 NM north may be mistaken for runway. When local altimeter setting not received, use Miami Intl altimeter setting and increase all DA/MDA 20 feet. For inoperative MALSR, increase S-LOC 9L Cats A and B visibility to 1 mile and Cats C and D visibility to 1 3/8 miles. ZOLTA Fix minimums, for inoperative MALSR, increase S-LOC 9L all Cats visibility to 1 mile. ZOLTA Fix minimums, for inoperative MALSR, when using Miami Intl altimeter setting, increase Cats A and B visibility to 1 mile and Cats C and D visibility to 1 1/8 miles. For inoperative MALSR, when using Miami Intl altimeter setting, increase S-ILS 9L all Cats visibility to 7/8 mile.

MALSR

MISSED APPROACH: Climb to 2000 heading 093° and DHP VORTAC R-069 to JANUS INT/DHP 42.5 DME and hold.

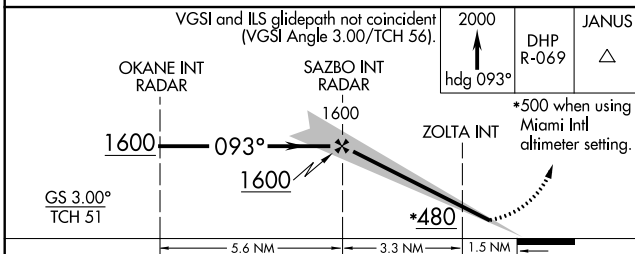
ATIS 125.9	MIAMI APP CON 128.6 306.975	OPA LOCKA TOWER ★ 134.675 (CTAF) 0	GND CON 120.025	CLNC DEL 119.2
----------------------	---------------------------------------	--	---------------------------	--------------------------

RADAR REQUIRED



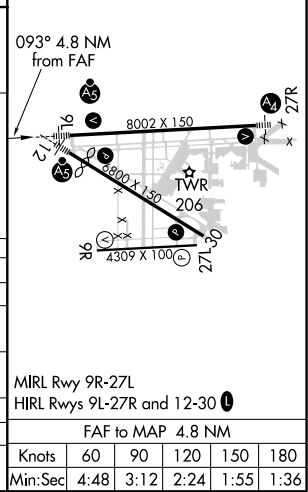
SE-3, 25 FEB 2021 to 25 MAR 2021

SE-3, 25 FEB 2021 to 25 MAR 2021



ELEV 8	D	TDZE 8
--------	---	--------

CATEGORY	A	B	C	D
S-ILS 9L		258-3/4	250 (300-3/4)	
S-LOC 9L	480-3/4	472 (500-3/4)	480-1	472 (500-1)
CIRCLING	540-1	532 (600-1)	540-1 1/2 532 (600-1 1/2)	560-2 552 (600-2)
ZOLTA FIX MINIMUMS				
S-LOC 9L		380-3/4	372 (400-3/4)	
CIRCLING	540-1	532 (600-1)	540-1 1/2 532 (600-1 1/2)	560-2 552 (600-2)



FAF to MAP 4.8 NM					
Knots	60	90	120	150	180
Min:Sec	4:48	3:12	2:24	1:55	1:36