


|  |                        |   |
|--|------------------------|---|
| WAAS<br>CH <b>53422</b><br><b>W09A</b> | APP CRS<br><b>093°</b> | Rwy Idg <b>8002</b><br>TDZE <b>8</b><br>Apt Elev <b>8</b> |
|--|------------------------|---|

# RNAV (GPS) RWY 9L

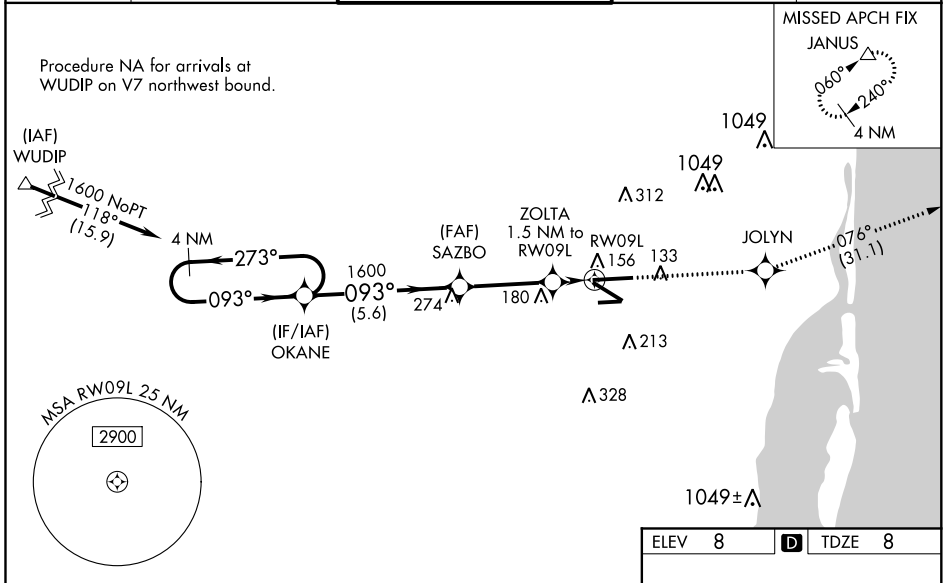
MIAMI-OPA LOCKA EXECUTIVE (OPF)

**⚠** Baro-VNAV NA when using Miami Intl altimeter setting. For uncompensated Baro-VNAV systems, LNAV/VNAV NA below -15°C (5°F) or above 43°C (109°F). DME/DME RNP-0.3 NA. Helicopter visibility reduction below 3/4 SM NA. When local altimeter setting not received, use Miami Intl altimeter setting and increase all DA/MDA 20 feet. For inoperative MALSRS, increase LNAV/VNAV all Cats visibility to 1 mile, LNAV Cats A and B visibility to 1 mile and Cats C and D visibility to 1 1/2 miles. For inoperative MALSRS, when using Miami Intl altimeter setting, increase LPV all Cats visibility to 3/8 mile, LNAV/VNAV all Cats visibility to 1 1/8 miles and LNAV Cats A and B visibility to 1 mile. Inoperative table does not apply to LPV all Cats. Caution: Lights on highway 0.7 NM north may be mistaken for runway.

**MALSRS** 

**MISSED APPROACH:**  
Climb to 2000 direct JOLYN and on track 076° to JANUS and hold.

|                      |                                       |  |                           |                          |
|----------------------|---------------------------------------|--|---------------------------|--------------------------|
| ATIS<br><b>125.9</b> | MIAMI APP CON<br><b>128.6 306.975</b> | OPA LOCKA TOWER *<br><b>134.675 (CTAF) 0</b> | GND CON<br><b>120.025</b> | CLNC DEL<br><b>119.2</b> |
|----------------------|---------------------------------------|--|---------------------------|--------------------------|



SE-3, 25 FEB 2021 to 25 MAR 2021

SE-3, 25 FEB 2021 to 25 MAR 2021

VGSI and RNAV glidepath not coincident (VGSI Angle 3.00/TCH 56).

4 NM Holding Pattern

OKANE

SAZBO

ZOLTA 1.5 NM to RWY 9L

RWY 9L

JOLYN tr 076°

JANUS

\*NNAV only

GP 3.00° TCH 51

1600

273°

093°

1600

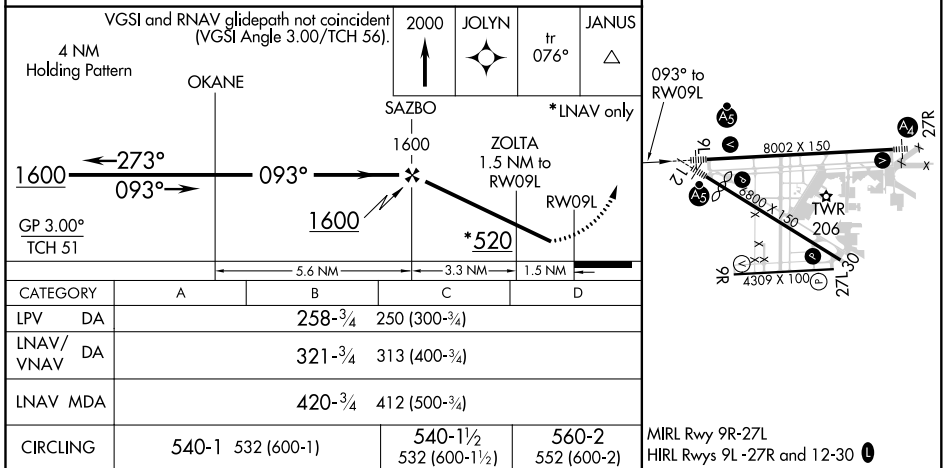
5.6 NM

3.3 NM

1.5 NM

\*520

ELEV 8 TDZE 8



| CATEGORY     | A     | B           | C                            | D                    |
|--------------|-------|-------------|------------------------------|----------------------|
| LPV DA       |       | 258-3/4     | 250 (300-3/4)                |                      |
| LNAV/VNAV DA |       | 321-3/4     | 313 (400-3/4)                |                      |
| LNAV MDA     |       | 420-3/4     | 412 (500-3/4)                |                      |
| CIRCLING     | 540-1 | 532 (600-1) | 540-1 1/2<br>532 (600-1 1/2) | 560-2<br>552 (600-2) |

MIRL Rwy 9R-27L  
HIRL Rwy 9L-27R and 12-30 0