
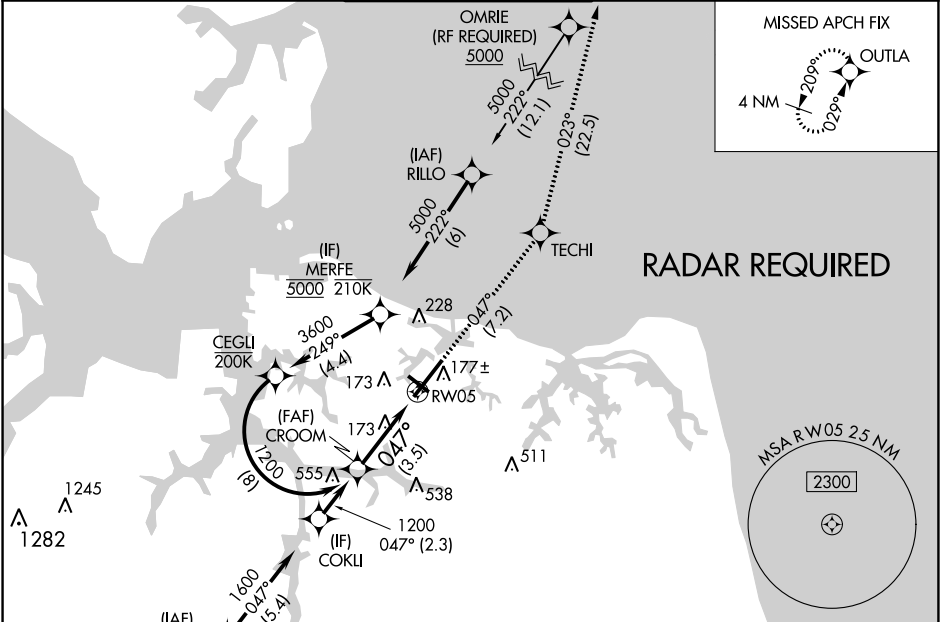


APP CRS	Rwy Idg	7809
047°	TDZE	26
	Apt Elev	27

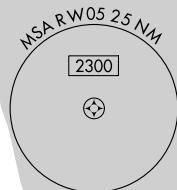
RNAV (RNP) Y RWY 5

NORFOLK INTL (ORF)

<p>▼ For uncompensated Baro-VNAV systems, LNAV/VNAV NA below -9°C (16°F) or above 54°C (130°F). GPS required.</p>		<p>MALSR</p> 	<p>MISSED APPROACH: Climb to 2000 on track 047° to TECHI and on track 023° to OUTLA and hold.</p>	
ATIS	NORFOLK APP CON	NORFOLK TOWER	GND CON	CLNC DEL
127.15	118.9 353.7	120.8 257.8	121.9	118.5



RADAR REQUIRED



NE-3, 25 FEB 2021 to 25 MAR 2021

NE-3, 25 FEB 2021 to 25 MAR 2021

See planview for multiple IF locations.

2000	tr 047°	TECHI	tr 023°	OUTLA
------	---------	-------	---------	-------

CATEGORY	A	B	C	D
RNP 0.10 DA		350/26	324 (400-½)	
RNP 0.30 DA		454/40	428 (500-¾)	

AUTHORIZATION REQUIRED

