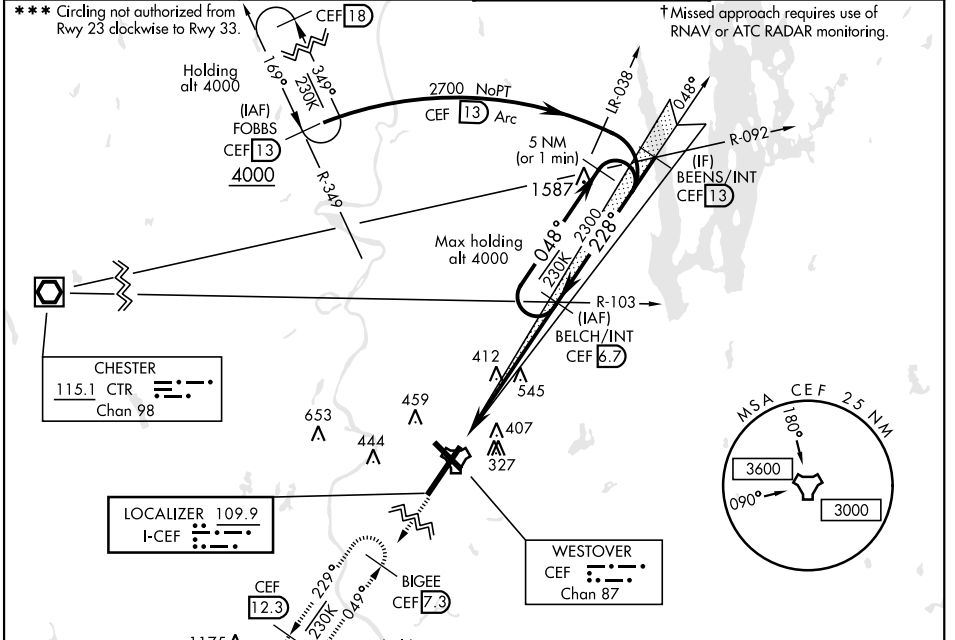


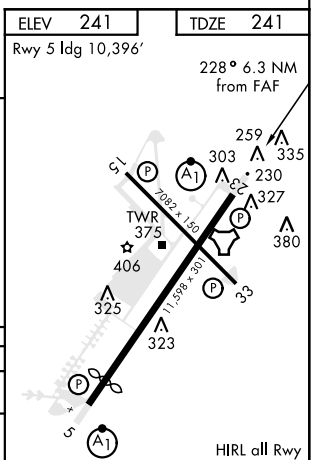
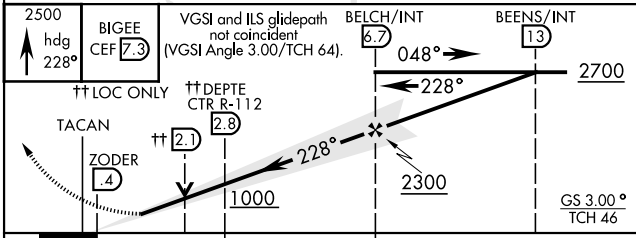
LOC I-CEF <b>109.9</b>	APCH CRS <b>228°</b>	Rwy ldg <b>11,598</b> TDZE <b>241</b> Arprt Elev <b>241</b>	AL-447 [USAF]	WESTOVER ARB METROPOLITAN (KCEF)
---------------------------	-------------------------	---	---------------	----------------------------------

DME required.	ALSF-1	† MISSED APPROACH: Climb to 2500 on heading 228° to intercept CEF TACAN R-229 direct BIGEE and hold.
---------------	--------	--

ATIS ★ <b>127.525</b>	BRADLEY APP CON <b>125.35 281.5</b>	WESTOVER TOWER ★ <b>134.85 (CTAF) 348.75</b>	GND CON <b>118.35 275.8</b>
--------------------------	--	---	--------------------------------



EMERG SAFE ALT 100 NM 6400	ELEV 241	TDZE 241
----------------------------	----------	----------



CATEGORY	A	B	C	D	E
S-ILS 23 *	441/24		200	[200-½]	
S-LOC 23 **	860/24 619 (700-½)		860-1¾ 619 (700-1¾)		
***	860-1 619 (700-1)		860-1¾ 619 (700-1¾)	980-2¼ 739 (800-2¼)	1000-2¾ 759 (800-2¾)

FAF to MAP 6.3 NM					
Knots	60	90	120	150	180
Min:Sec	6:18	4:12	3:09	2:31	2:06

NE-1, 25 FEB 2021 to 25 MAR 2021

NE-1, 25 FEB 2021 to 25 MAR 2021