

RNAV (GPS) RWY 23

APCH CRS	Rwy Idg	11,598
228°	TDZE	241
	Arpt Elev	241

AL-447 (USAF)

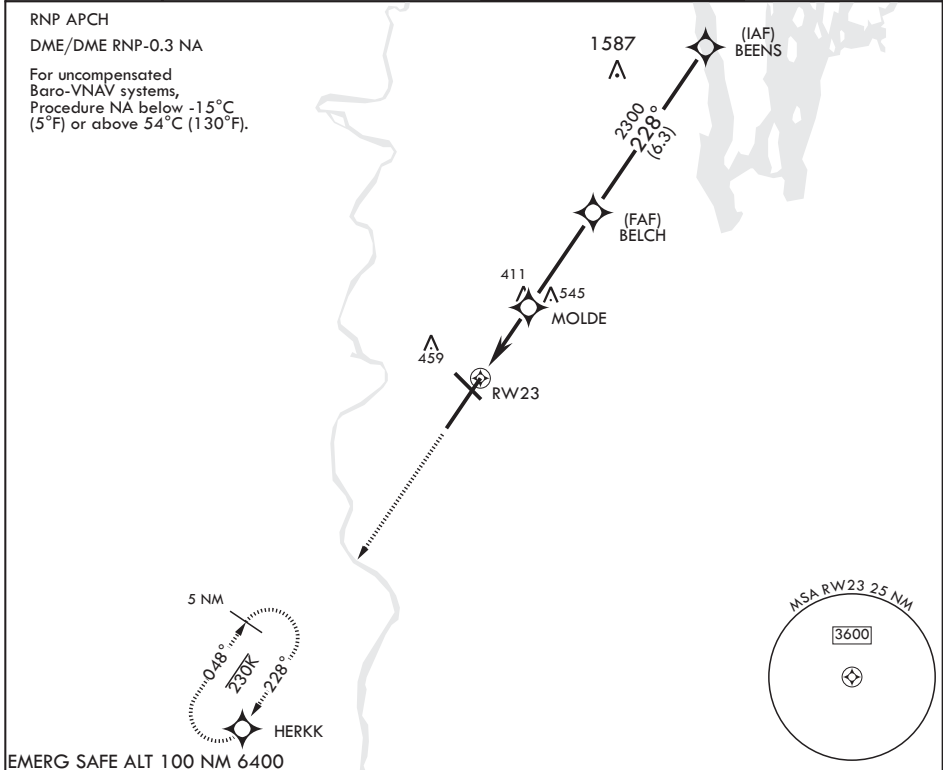
WESTOVER ARB METROPOLITAN (KCEF)

⚠ * When ALS inop, increase vis to 1 1/2 miles.
 ** When ALS inop, increase CAT AB RVR to 55, vis to 1 mile; CAT CDE vis to 1 3/4 miles.
 *** Circling not authorized from Rwy 23 clockwise to Rwy 33.

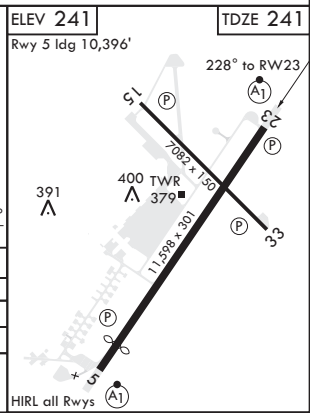
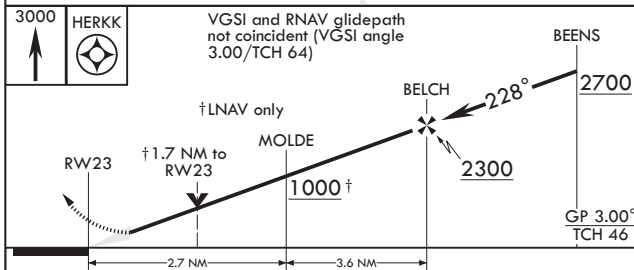
ALSF-1 MISSED APPROACH: Climb to 3000 direct HERKK and hold.



ATIS* 127.525	BRADLEY APP CON/DEP CON 125.35 281.5	TOWER* 134.85 (CTAF) 348.75	GND CON 118.35 275.8
------------------	---	--------------------------------	-------------------------



EMERG SAFE ALT 100 NM 6400



CATEGORY	A	B	C	D	E
LNAV/VNAV DA*	776/55		535	(600-1)	
LNAV MDA**	840/24 599 (600-1/2)		840-1 1/4 599	(600-1 1/4)	
C CIRCLING***	840-1 599 (600-1)		840-1 3/4 599 (600-1 3/4)	980-2 1/4 739 (800-2 1/4)	1000-2 3/4 759 (800-2 3/4)

RNAV (GPS) RWY 23

NE-1, 25 FEB 2021 to 25 MAR 2021

NE-1, 25 FEB 2021 to 25 MAR 2021