

RNAV (GPS) RWY 5

APCH CRS	Rwy Idg	10,396
048°	TDZE	238
	Arpt Elev	241

AL-447 (USAF)

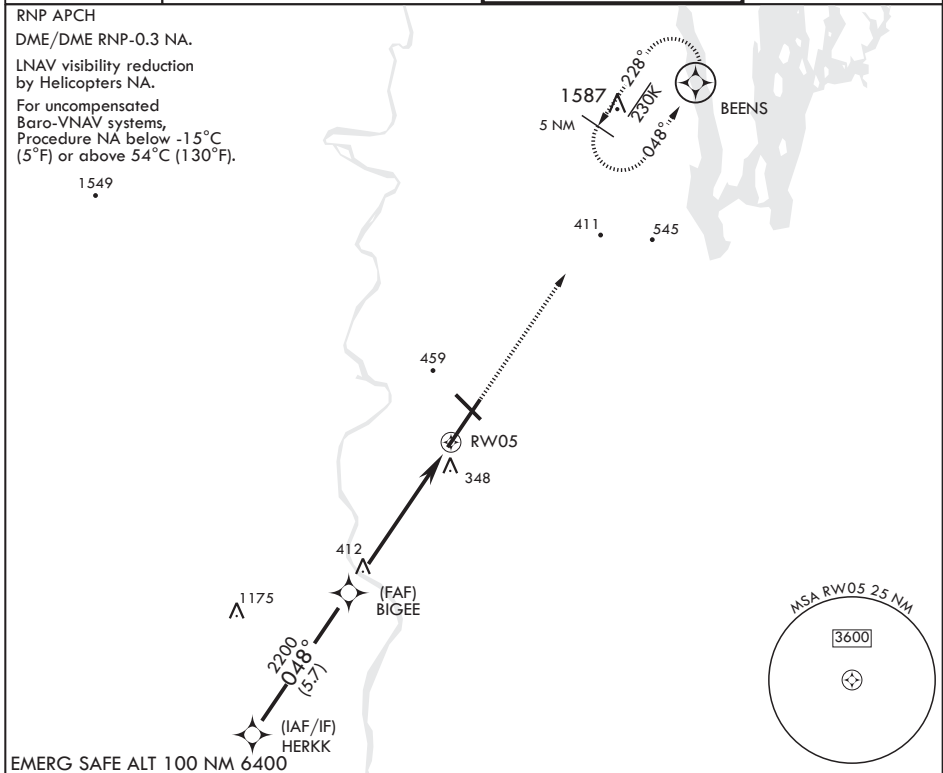
WESTOVER ARB METROPOLITAN (KCEF)

V * When ALS inop increase vis to 1 3/8 miles.
 ** When ALS inop increase CAT AB RVR to 55, vis to 1 mile, CAT CDE vis to 1 3/8 miles.
 *** Circling not authorized all CAT acft from Rwy 23 clockwise to Rwy 33.

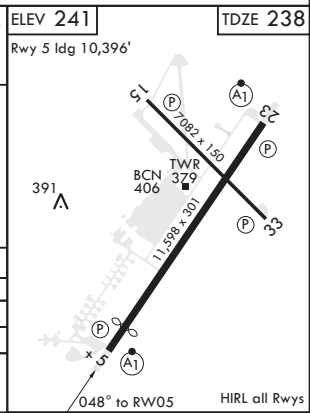
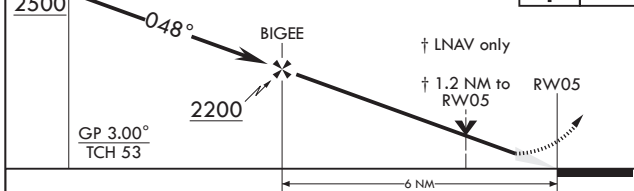


MISSED APPROACH: Climb to 2700 direct BEENS and hold.

ATIS* 127.525	BRADLEY APP CON/DEP CON 125.35 281.5	TOWER* 134.85 (CTAF) 348.75	GND CON 118.35 275.8
-------------------------	--	---------------------------------------	--------------------------------



HERKK	VGSI and RNAV glidepath not coincident (VGSI Angle 3.00/TCH 72 ft)	2700	BEENS	ELEV 241	TDZE 238
-------	--	------	-------	----------	----------



CATEGORY	A	B	C	D	E
LNAV/VNAV DA*	686/45		448	(500-7/8)	
LNAV MDA**	700/24 462 (500-1/2)		700/50	462 (500-1)	
C CIRCLING***	800-1 559 (600-1)	840-1 1/2 599 (600-1 1/2)	980-2 1/4 739 (800-2 1/4)	1260-3 1019 (1100-3)	

RNAV (GPS) RWY 5

NE-1, 25 FEB 2021 to 25 MAR 2021

NE-1, 25 FEB 2021 to 25 MAR 2021