

TACAN RWY 23

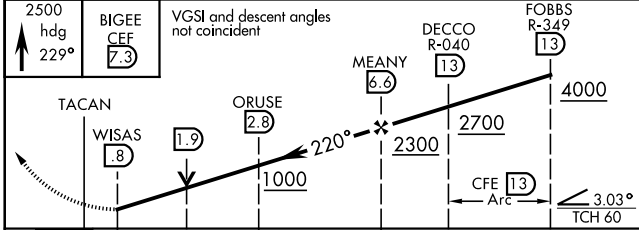
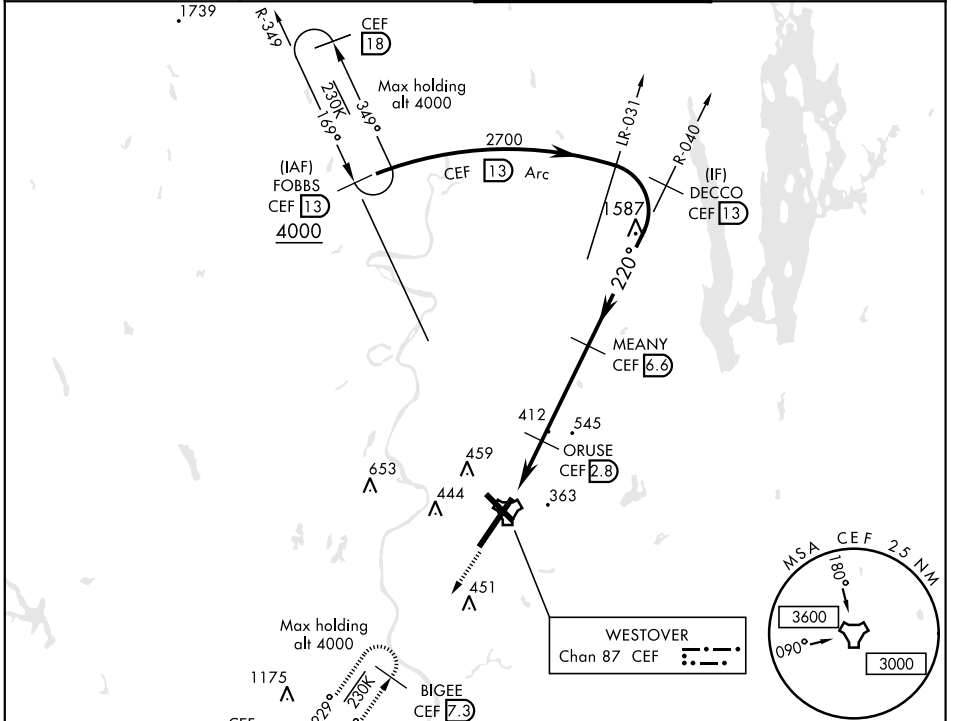
TACAN CEF Chan 87	APCH CRS 220°	Rwy ldg 11,598 TDZE 241 Arprt Elev 241	AL-447 [USAF]	WESTOVER ARB METROPOLITAN (KCEF)
-----------------------------	-------------------------	-------------------------------------------------------------------	---------------	----------------------------------

▽ * When ALS inop, increase CAT AB RVR to 55 and vis to 1 mile, CAT CDE vis to 1/2
** Circling not authorized all CAT acft from RWY 23 clockwise to RWY 33.

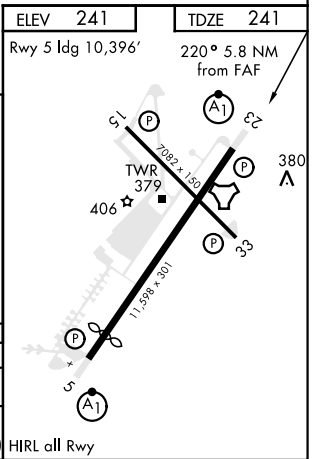


MISSED APPROACH: Climb to 2500 on heading 228° to intercept CEF TACAN R-229 direct BIGEE and hold.

ATIS ★ 127.525	BRADLEY APP CON 125.35 281.5	WESTOVER TOWER ★ 134.85 (CTAF) 348.75	GND CON 118.35 275.8
--------------------------	----------------------------------------	-------------------------------------------------	--------------------------------



CATEGORY	A	B	C	D	E
S-23 *	780/24 539 (600-1/2)		780/55 539 (600-1)		
CIRCLING **	800-1 559 (600-1)		840-1 1/2 599 (600-1 1/2)	980-2 1/4 739 (800-2 1/4)	1000-2 3/4 759 (800-2 3/4)



TACAN RWY 23

NE-1, 25 FEB 2021 to 25 MAR 2021

NE-1, 25 FEB 2021 to 25 MAR 2021