

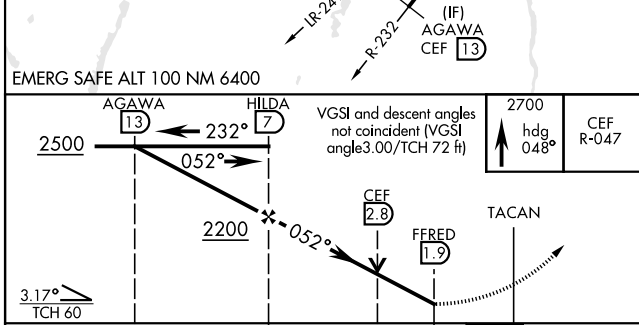
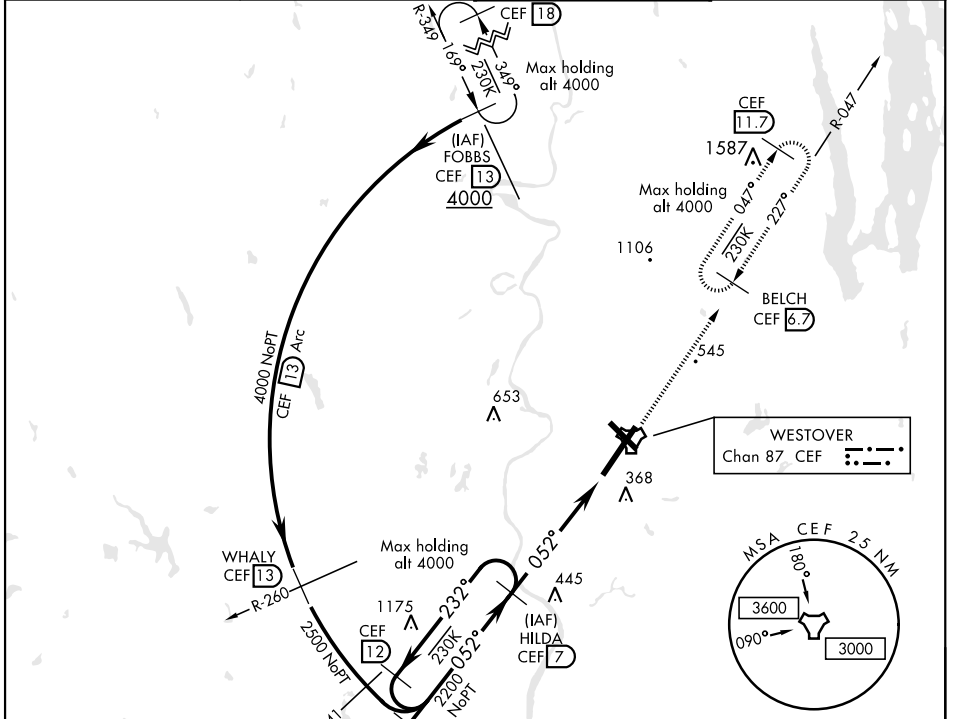
TACAN RWY 5

TACAN CEF Chan 87	APCH CRS 052°	Rwy ldg 10,396' TDZE 238 Arprt Elev 241	AL-447 [USAF]	WESTOVER ARB METROPOLITAN (KCEF)
-----------------------------	-------------------------	--	---------------	----------------------------------

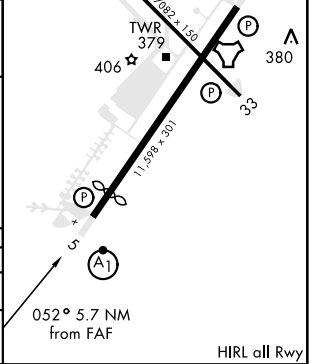
⚠ * When ALS inop increase CAT AB RVR to 55 and vis to 1 mile, CAT CDE vis to 1½ miles.
****** Circling not authorized all CAT act from RWY 23 clockwise to RWY 33.

ALSF-1  MISSED APPROACH: Climb to 2700 on heading 048° to intercept CEF TACAN R-047 direct BELCH and hold.

ATIS ★ 127.525	BRADLEY APP CON 125.35 281.5	WESTOVER TOWER ★ 134.85 (CTAF) 348.75	GND CON 118.35 275.8
--------------------------	--	---	--------------------------------



ELEV 241	TDZE 238
Rwy 5 ldg 10,396'	



CATEGORY	A	B	C	D	E
S-5 *	760/24 522 (600-½)		760/55 522 (600-1)		
C CIRCLING **	800-1 559 (600-1)		840-1½ 599 (600-1½)	980-2¼ 739 (800-2¼)	1000-2¾ 759 (800-2¾)

TACAN RWY 5

NE-1, 25 FEB 2021 to 25 MAR 2021

NE-1, 25 FEB 2021 to 25 MAR 2021