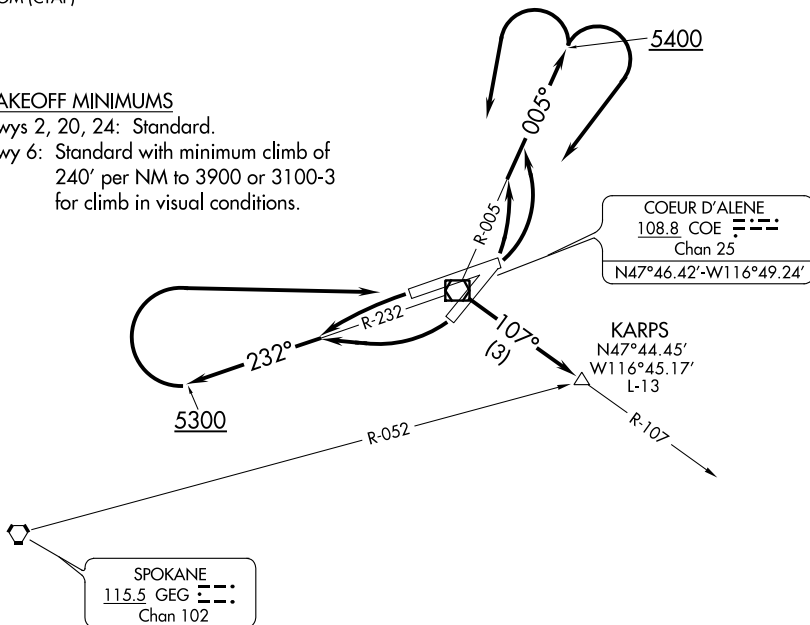


AWOS-3PT
135.075
SPOKANE DEP CON
132.1 263.0
UNICOM (CTAF)
122.8

TAKEOFF MINIMUMS

Rwys 2, 20, 24: Standard.

Rwy 6: Standard with minimum climb of 240' per NM to 3900 or 3100-3 for climb in visual conditions.



COEUR D'ALENE
108.8 COE
Chan 25
N47°46.42'-W116°49.24'

KARPS
N47°44.45'
W116°45.17'
L-13

SPOKANE
115.5 GEG
Chan 102

TAKEOFF OBSTACLE NOTES

Rwy 20: Trees beginning 165' from DER, 276' right of centerline, up to 109' AGL/2399' MSL. Tree 2914' from DER, 425' left of centerline, 38' AGL/2383' MSL.

Rwy 6: Poles beginning 895' from DER, 690' right of centerline, up to 44' AGL/2354' MSL. Trees beginning 1149' from DER, 720' right of centerline, up to 103' AGL/2563' MSL.

NOTE: Chart not to scale.

DEPARTURE ROUTE DESCRIPTION

TAKEOFF RUNWAY 2: Climbing left turn to 5400 on COE R-005, then left or right turn direct COE VOR/DME, then on COE R-107 to KARPS INT to MEA for route of flight.

TAKEOFF RUNWAY 6: Climbing left turn to 5400 on COE R-005, then left or right turn direct COE VOR/DME, then on COE R-107 to KARPS INT to MEA for route of flight or climb in visual conditions to cross Coeur d'Alene-Pappy Boyington Field Airport at or above 5300 before proceeding on course. When executing VCOA, notify ATC prior to departure.

TAKEOFF RUNWAY 20: Climbing right turn, thence

TAKEOFF RUNWAY 24: Climbing left turn, thence

. . . . climb on COE R-232 to 5300, then right direct COE VOR/DME, then on COE R-107 to KARPS INT to MEA for route of flight.