


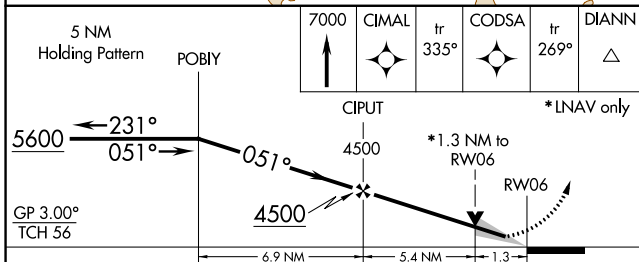
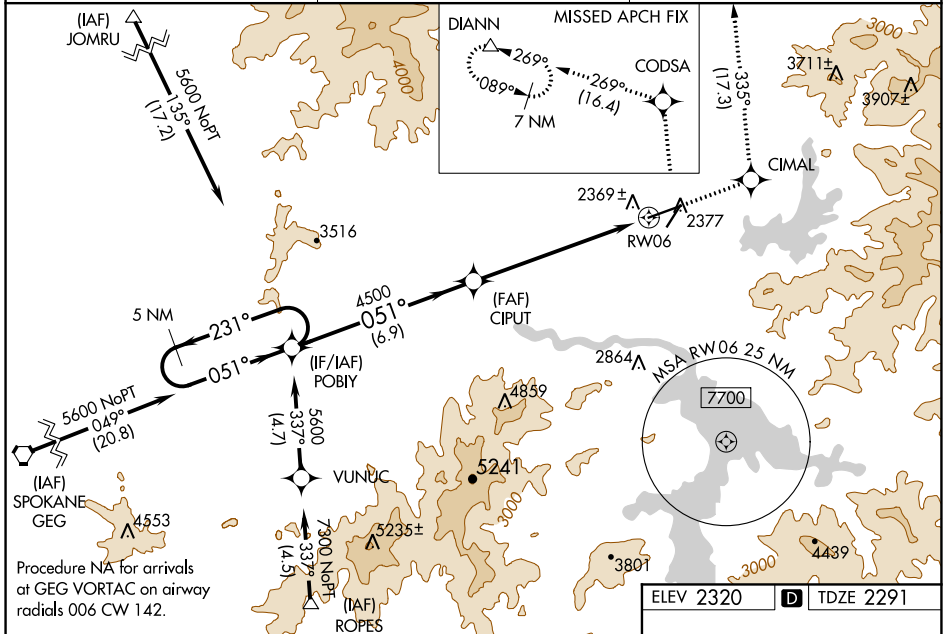
WAAS CH <b>70608</b> <b>W06A</b>	APP CRS <b>051°</b>	Rwy Idg <b>7400</b> TDZE <b>2291</b> Apt Elev <b>2320</b>
--	------------------------	---

# RNAV (GPS) RWY 6

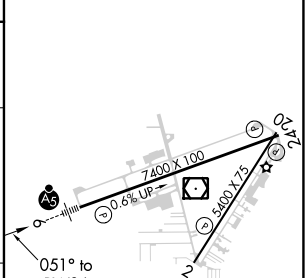
COEUR D'ALENE-PAPPY BOYINGTON FIELD (COE)

<p><b>⚠</b> For uncompensated Baro-VNAV systems, LNAV/VNAV NA below -21°C (-5°F) or above 53°C (127°F). DME/DME RNP-0.3 NA. When local altimeter setting not received, use Spokane Intl altimeter setting and increase all DA/MDA 80 feet. Increase LNAV/VNAV all Cats visibility ¼ mile, LNAV Cat C/D visibility ½ mile, and Circling Cat C visibility ¼ mile. Baro-VNAV and VDP NA when using Spokane Intl altimeter setting. Night landing: Rwy 2 NA.</p>	<p><b>MALSR</b></p> 	<p><b>MISSED APPROACH:</b> Climb to 7000 direct CIMAL and on track 335° to CODSA and on track 269° to DIANN and hold.</p>
--	---	---

AWOS-3PT <b>135.075</b>	SPOKANE APP CON <b>132.1 263.0</b>	UNICOM <b>122.8 (CTAF)</b>
----------------------------	---------------------------------------	-------------------------------



ELEV 2320	<b>D</b>	TDZE 2291
-----------	----------	-----------



CATEGORY	A	B	C	D
LPV DA	2491-½ 200 (200-½)			
LNAV/VNAV DA	2654-¾ 363 (400-¾)			
LNAV MDA	2740-½	449 (500-½)	2740-1	449 (500-1)
CIRCLING	2740-1 420 (500-1)	2860-1 540 (600-1)	2880-1½ 560 (600-1½)	2880-2 560 (600-2)

MIRL Rwy 2-20 **Ⓡ**  
 HIRL Rwy 6-24 **Ⓡ**  
 REIL Rws 2 and 24 **Ⓡ**

# RNAV (GPS) RWY 6

NW-1, 25 FEB 2021 to 25 MAR 2021

NW-1, 25 FEB 2021 to 25 MAR 2021