

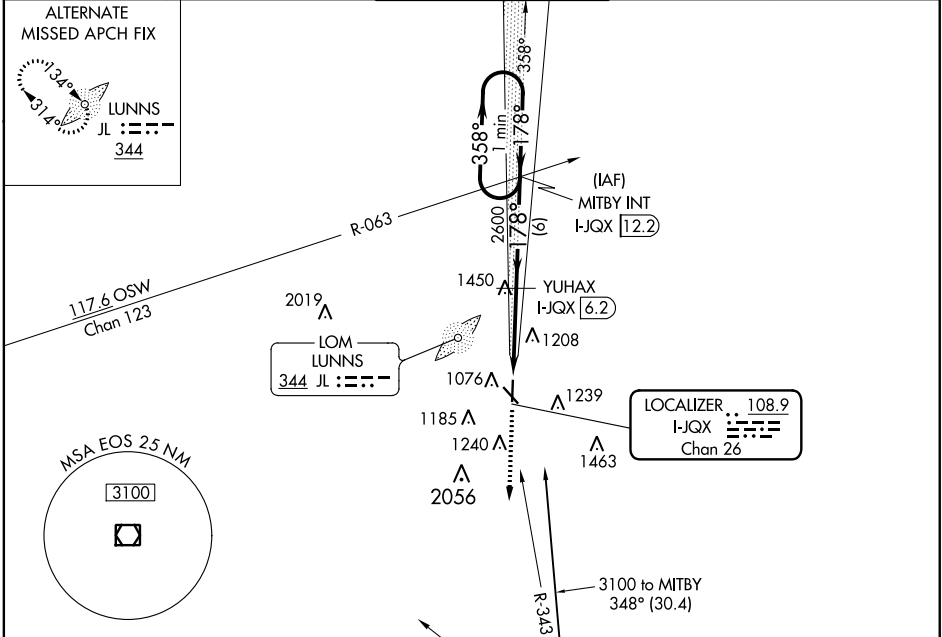
LOC/DME I-JQX 108.9 Chan 26	APP CRS 178°	Rwy Idg 6499 TDZE 965 Apt Elev 978
---	------------------------	---

ILS or LOC RWY 18

JOPLIN RGNL (JLN)

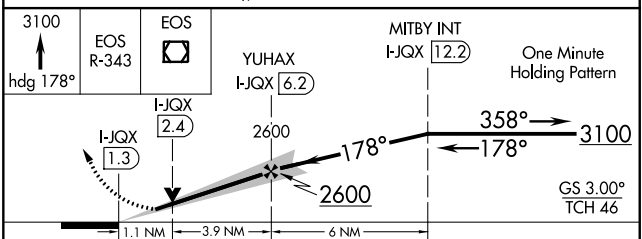
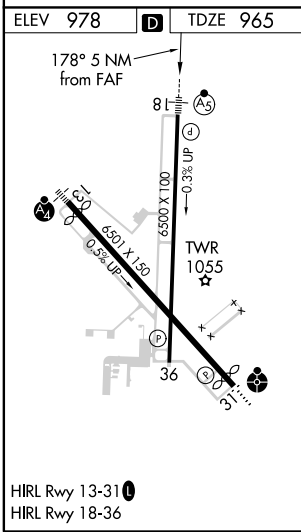
DME required for LOC only.		MALSR 	MISSED APPROACH: Climb to 3100 via heading 178° and EOS R-343 to EOS VOR/DME and hold.	
----------------------------	--	-----------	--	--

ATIS 120.85	KANSAS CITY CENTER 128.6 282.325	JOPLIN TOWER ★ 119.8 (CTAF) 0	GND CON 121.6	UNICOM 122.95
-----------------------	--	---	-------------------------	-------------------------



NC-3, 25 FEB 2021 to 25 MAR 2021

NC-3, 25 FEB 2021 to 25 MAR 2021



CATEGORY	A	B	C	D
S-ILS 18	1165/24		200 (200-1/2)	
S-LOC 18	1340/24		375 (400-1/2) 1340/40 375 (400-3/4)	
CIRCLING	1460-1 482 (500-1)	1500-1 522 (600-1)	1540-1 1/2 562 (600-1 1/2)	1600-2 622 (700-2)