

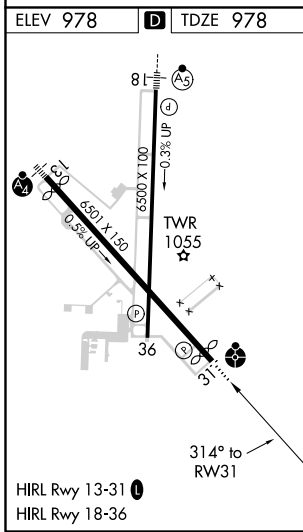
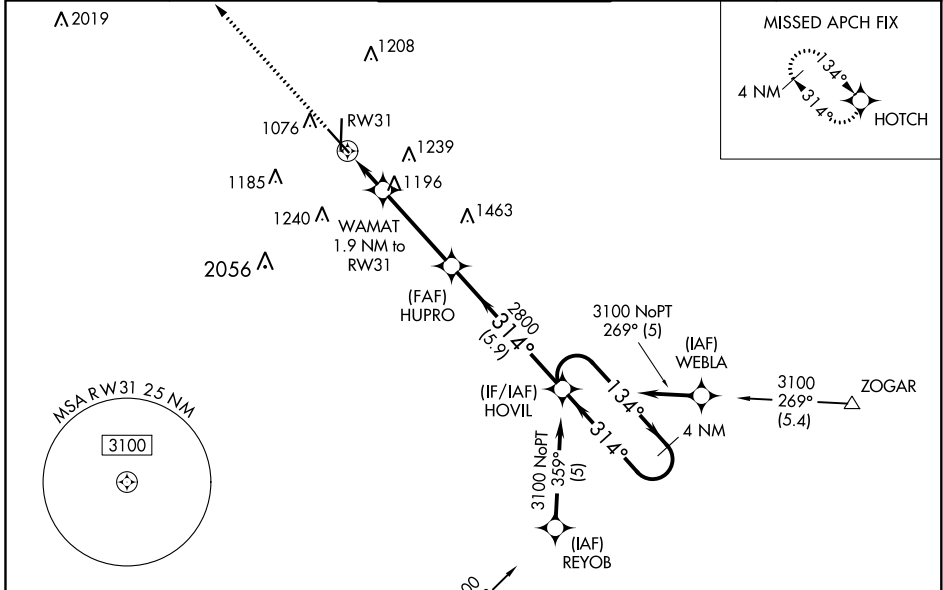
WAAS CH 69334 W31A	APP CRS 314°	Rwy Idg TDZE Apt Elev	5813 978 978
----------------------------------------	------------------------	-----------------------------	-----------------------------------------

RNAV (GPS) RWY 31

JOPLIN RGNL (JLN)

RNP APCH.		ODALS	MISSED APPROACH: Climb to 3100 direct HOTCH and hold.
<p>▼ For uncompensated Baro-VNAV systems, LNAV/VNAV NA below -1.6°C (4°F) or above 54°C (130°F). Inoperative table does not apply. Rwy 31 helicopter visibility reduction below ¾ SM NA.</p>			

ATIS 120.85	KANSAS CITY CENTER 128.6 282.325	JOPLIN TOWER* 119.8 (CTAF)	GND CON 121.6	UNICOM 122.95
-----------------------	--------------------------------------------	--------------------------------------	-------------------------	-------------------------



Procedure NA for arrivals on EOS VOR/DME airway radials 351 CW 111.

3100	HOTCH	HOVIL	4 NM Holding Pattern
↑	✧		
* LNAV only.	WAMAT 1.9 NM to RW31	HUPRO 2800	HOVIL 4 NM
		314°	134° → 3100
		1620*	← 314°
		2800	
		1.9 NM	3.7 NM
			5.9 NM
			GP 3.00° TCH 47
CATEGORY	A	B	C
LPV DA		1229-¾	251 (300-¾)
LNAV/VNAV DA		1357-1¼	379 (400-1¼)
LNAV MDA	1500-1	522 (600-1)	1500-1½ 522 (600-1½)
CIRCLING	1500-1	522 (600-1)	1540-1½ 562 (600-1½) 1600-2 622 (700-2)

NC-3, 25 FEB 2021 to 25 MAR 2021

NC-3, 25 FEB 2021 to 25 MAR 2021