

LOC/DME I-PNC 111.9 Chan 56	APP CRS 175°	Rwy Idg 7201 TDZE 1004 Apt Elev 1008
---	------------------------	---

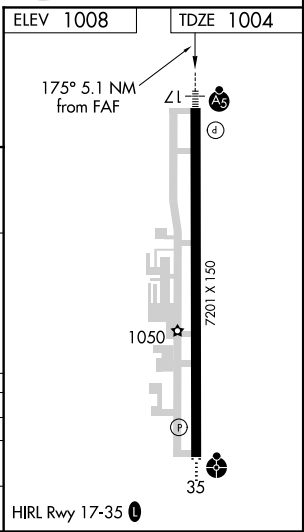
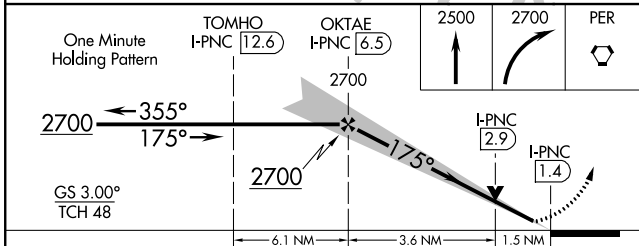
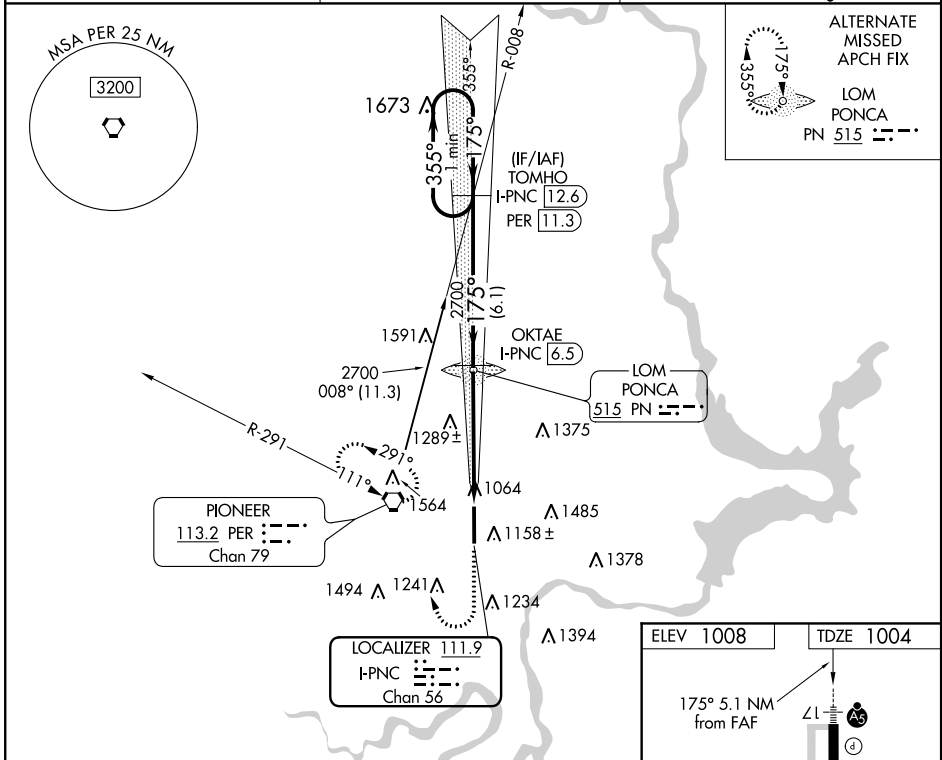
ILS or LOC/DME RWY 17

PONCA CITY RGNL (PNC)

NA When local altimeter setting not received, use Winfield-Arkansas City altimeter setting and increase S-ILS 17 DA 82 feet and all MDA 100 feet; increase S-LOC Cat C and D and Circling Cat C visibility ¼ mile. For inop MALSRL, when using Winfield-Arkansas City altimeter setting, increase S-ILS 17 visibility to 1 mile all Cats. VDP NA when using Winfield-Arkansas City altimeter setting.

MALSRL MISSED APPROACH: Climb to 2500 then climbing right turn to 2700 direct PER VORTAC and hold.

ASOS 134.075	KANSAS CITY CENTER 127.8 319.1	UNICOM 123.0 (CTAF)
------------------------	--	-------------------------------



CATEGORY	A	B	C	D
S-ILS 17	1204-½ 200 (200-½)			
S-LOC 17	1520-½ 516 (600-½)	1520-1 516 (600-1)	1520-1¼ 516 (600-1¼)	
CIRCLING	1520-1 512 (600-1)	1560-1½ 552 (600-1½)	1560-2 552 (600-2)	

SC-1, 25 FEB 2021 to 25 MAR 2021

SC-1, 25 FEB 2021 to 25 MAR 2021