

LOC/DME I-TYN <b>110.9</b> Chan <b>46</b>	APP CRS <b>036°</b>	Rwy Idg <b>8000</b> TDZE <b>40</b> Apt Elev <b>42</b>
---	------------------------	---

# ILS or LOC RWY 4R

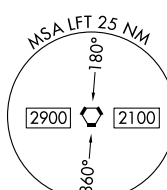
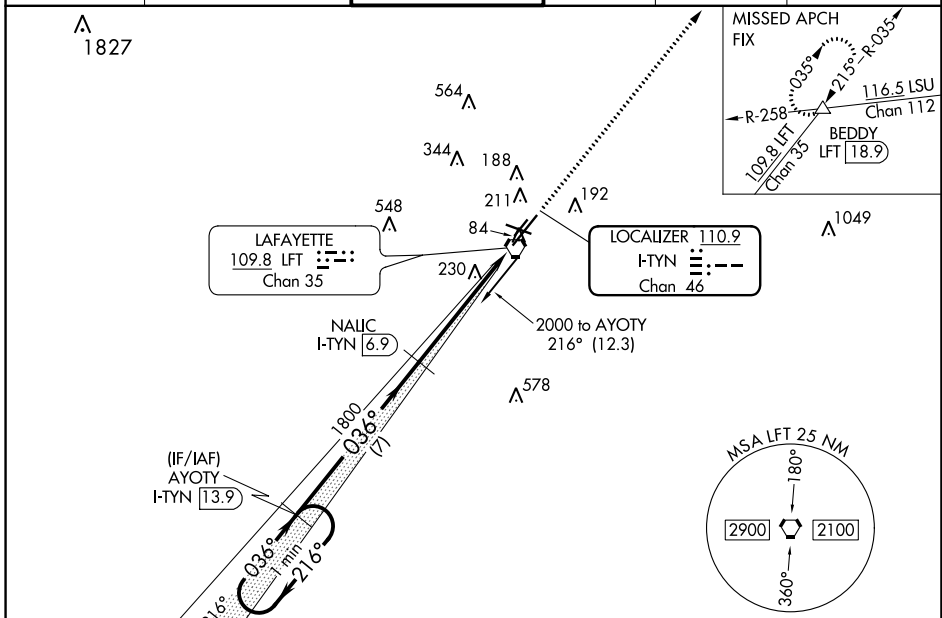
LAFAYETTE RGNL/PAUL FOURNET FIELD (LFT)

DME required for procedure entry and for LOC only.

MISSED APPROACH: Climb to 2000 on LFT R-035 to BEDDY INT/LFT 18.9 DME and hold.

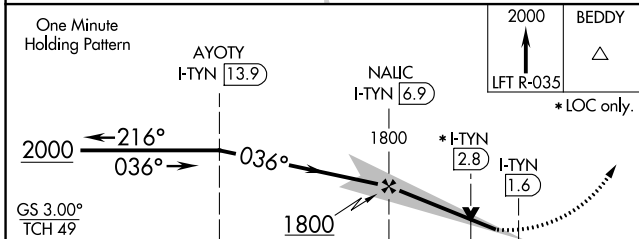
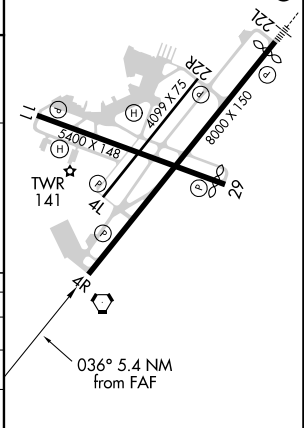
**ASR** Rwy 4R helicopter visibility reduction below 3/4 SM NA. VDP NA when using Acadiana Rgnl altimeter setting. When local altimeter setting not received, use Acadiana Rgnl altimeter setting and increase all DA 29 feet and all MDA 40 feet, increase S-ILS 4R and S-LOC 4R visibility all Cats 1/8 SM, Circling visibility Cat C/D 1/4 SM.

ATIS <b>134.05</b>	LAFAYETTE APP CON * <b>121.1 363.0</b>	LAFAYETTE TOWER * <b>118.5 (CTAF) 257.8</b>	GND CON <b>121.8</b>	CLNC DEL <b>125.55</b>	UNICOM <b>122.95</b>
-----------------------	---	--	-------------------------	---------------------------	-------------------------



ELEV <b>42</b>	<b>D</b> TDZE <b>40</b>
----------------	-------------------------

REIL Rwy 4L, 4R, 11, 22R and 29  
MIRL Rwy 4L-22R and 11-29  
HIRL Rwy 4R-22L



CATEGORY	A	B	C	D
S-ILS 4R	316-7/8 276 (300-7/8)			
S-LOC 4R	500-1 460 (500-1)	500-13/8 460 (500-13/8)		
<b>C</b> CIRCLING	540-1 498 (500-1)	580-1 538 (600-1)	700-13/4 658 (700-13/4)	700-2 658 (700-2)

SC-4, 25 FEB 2021 to 25 MAR 2021

SC-4, 25 FEB 2021 to 25 MAR 2021