

VORTAC LFT	APP CRS	Rwy Idg	5400
109.8	137°	TDZE	42
Chan 35		Apt Elev	42

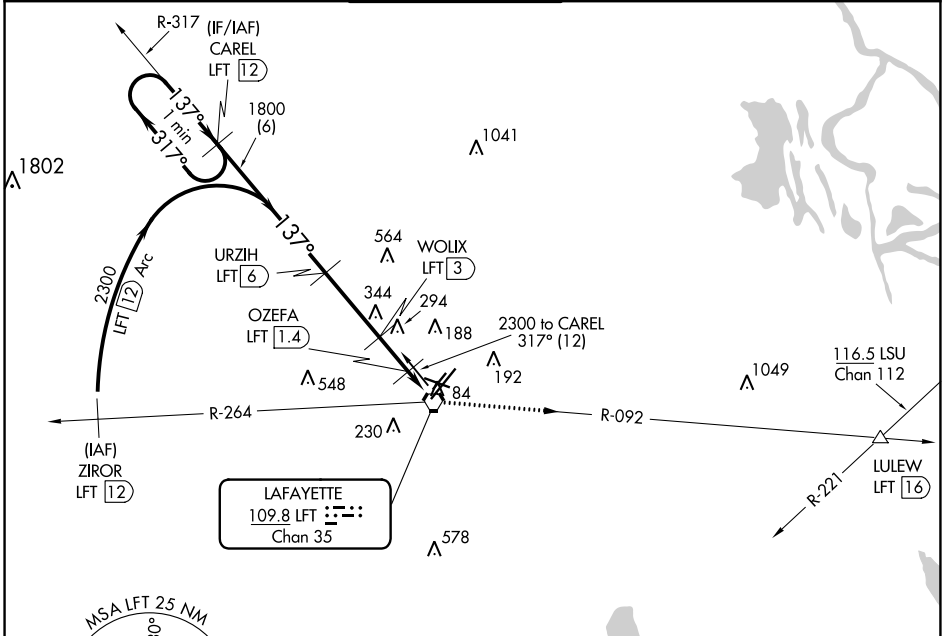
VOR/DME RWY 11

LAFAYETTE RGNL/PAUL FOURNET FIELD (LFT)

ASR Procedure NA at night. Helicopter visibility reduction below 1 SM NA. When local altimeter setting not received, use Acadiana Rgnl altimeter setting and increase all MDAs 40 feet, increase Circling visibility Cat C/D 1/4 SM.

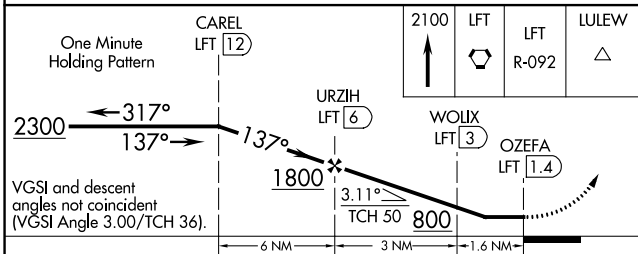
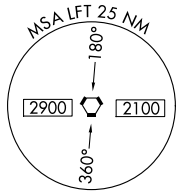
MISSED APPROACH: Climb to 2100 to LFT VORTAC and on LFT VORTAC R-092 to LULEW/LFT 16 DME.

ATIS	LAFAYETTE APP CON*	LAFAYETTE TOWER*	GND CON	CLNC DEL	UNICOM
134.05	121.1 363.0	118.5 (CTAF) 257.8	121.8	125.55	122.95

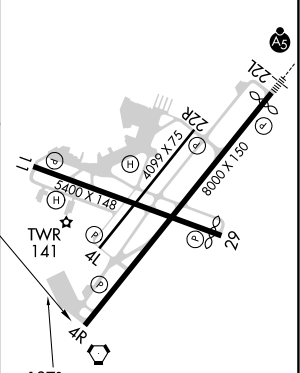


SC-4, 25 FEB 2021 to 25 MAR 2021

SC-4, 25 FEB 2021 to 25 MAR 2021



ELEV 42	TDZE 42
---------	---------



CATEGORY	A	B	C	D
S-11	660-1 618 (700-1)		660-1 618 (700-1 3/4)	660-2 618 (700-2)
CIRCLING	660-1 618 (700-1)		700-1 658 (700-1 3/4)	700-2 658 (700-2)

REIL Rwy 4L, 4R, 11, 22R and 29
MIRL Rwy 11-29, and 4L-22R
HIRL Rwy 4R-22L