

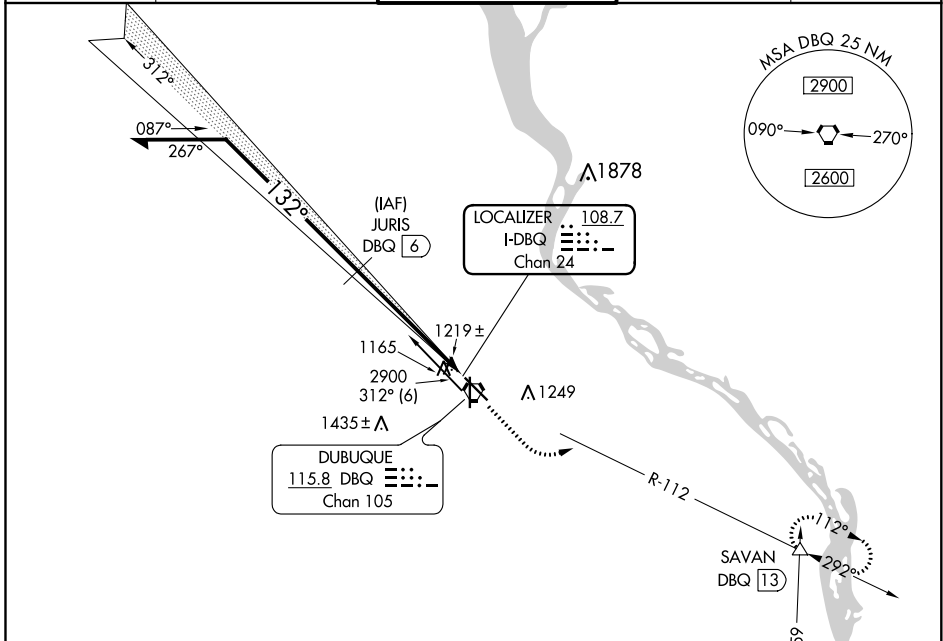
LOC/DME I-DBQ 108.7 Chan 24	APP CRS 132°	Rwy ldg TDZE Apt Elev 6502 1076 1077
--	------------------------	--

LOC/DME BC RWY 13

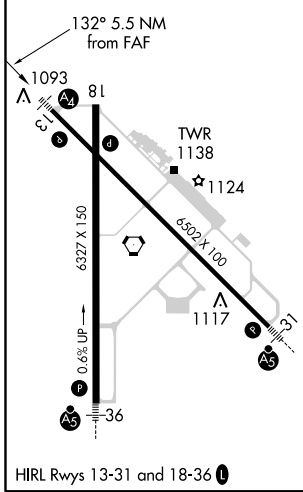
DUBUQUE RGNL (DBQ)

<p>NA</p> <p>-34°C/-29°F</p>	<p>DME from DBQ VORTAC. Simultaneous reception of I-DBQ and DBQ DME required.</p> <p>Inoperative table does not apply to S-13 Cat C.</p>	<p>MALS</p>	<p>MISSED APPROACH: Climb to 2500, then climbing left turn to 3300 via DBQ R-112 to SAVAN INT/13 DME and hold.</p>
------------------------------	--	-------------	--

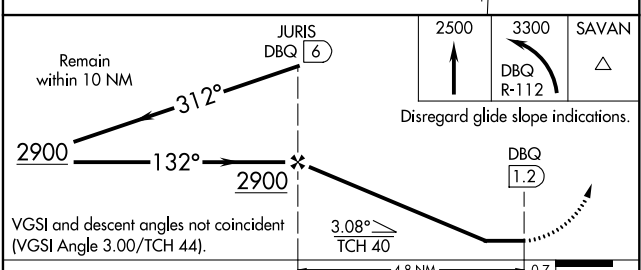
<p>ATIS 127.25</p>	<p>CHICAGO CENTER 133.95 281.4</p>	<p>DUBUQUE TOWER ★ 119.5 (CTAF) 0 254.4</p>	<p>GND CON 121.8</p>	<p>UNICOM 122.95</p>
-------------------------------	---	--	---------------------------------	---------------------------------



ELEV 1077	D	TDZE 1076
-----------	---	-----------



BACK COURSE



CATEGORY	A	B	C	D
S-13	1480-3/4 404 (500-3/4)		1480-1 1/4 404 (500-1 1/4)	
CIRCLING	1580-1 503 (600-1)		1600-1 1/2 523 (600-1 1/2)	1800-2 1/4 723 (800-2 1/4)

NC-3, 25 FEB 2021 to 25 MAR 2021

NC-3, 25 FEB 2021 to 25 MAR 2021