

WAAS CH 69400 W31A	APP CRS 312°	Rwy Idg TDZE 1062 Apt Elev 1077
--	------------------------	---

RNAV (GPS) RWY 31

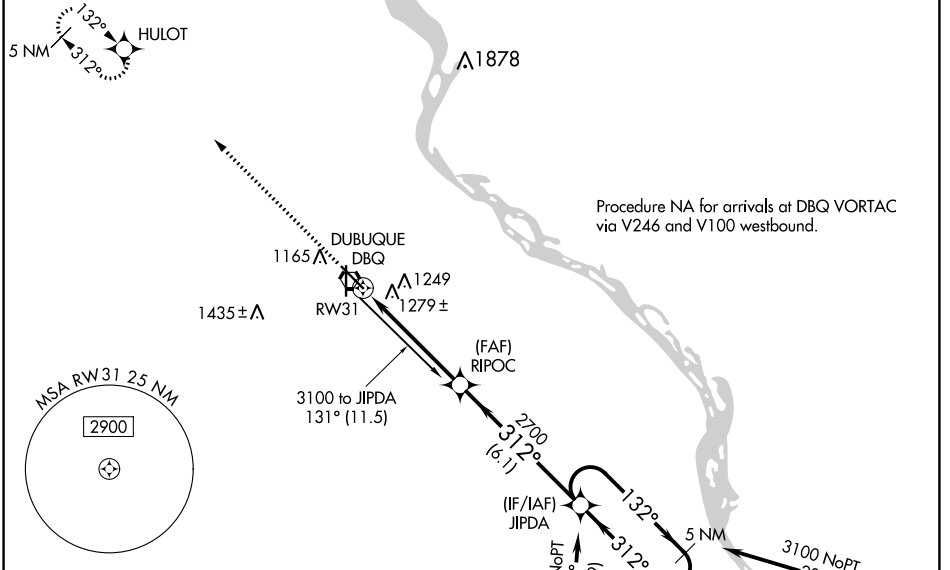
DUBUQUE RGNL (DBQ)

RNP APCH.

For inop MALSRL, increase LPV all Cats visibility to 1½ and LNAV Cats A, B visibility to 1. Baro-VNAV NA when using Monticello altimeter setting. For uncompensated Baro-VNAV systems, LNAV/VNAV NA below -17°C or above 46°C. VDP NA when using Monticello altimeter setting. If local altimeter setting not received, use Monticello altimeter setting and increase all DAs/MDAs 100 feet.

MALSRL MISSED APPROACH: Climb to 2800 direct HULOT and hold.

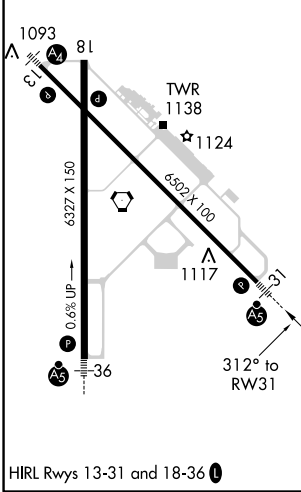
ATIS 127.25	CHICAGO CENTER 133.95 281.4	DUBUQUE TOWER* 119.5 (CTAF) 0 254.4	GND CON 121.8	UNICOM 122.95
-----------------------	---------------------------------------	---	-------------------------	-------------------------



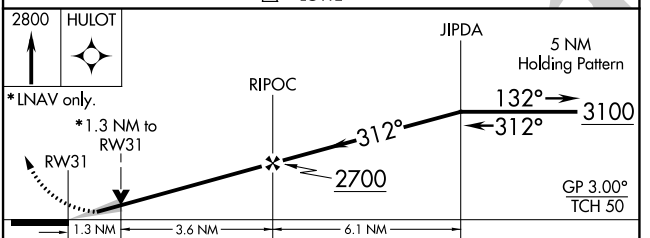
NC-3, 25 FEB 2021 to 25 MAR 2021

NC-3, 25 FEB 2021 to 25 MAR 2021

ELEV 1077	D	TDZE 1062
-----------	----------	-----------



DUBUQUE, IOWA
Orig-A 10OCT19



CATEGORY	A	B	C	D
LPV DA	1481-1 419 (500-1)			
LNAV/VNAV DA	1603-1½ 541 (600-1½)			
LNAV MDA	1540-¾ 478 (500-¾)		1540-1 478 (500-1)	
C CIRCLING	1620-2 543 (600-2)		1800-2¼ 723 (800-2¼)	