

LOC/DME I-REE 111.35 Chan 50 (Y)	APP CRS 316°	Rwy Ldg TDZE Apt Elev	7302 806 808
---	------------------------	-----------------------------	---

ILS or LOC RWY 32

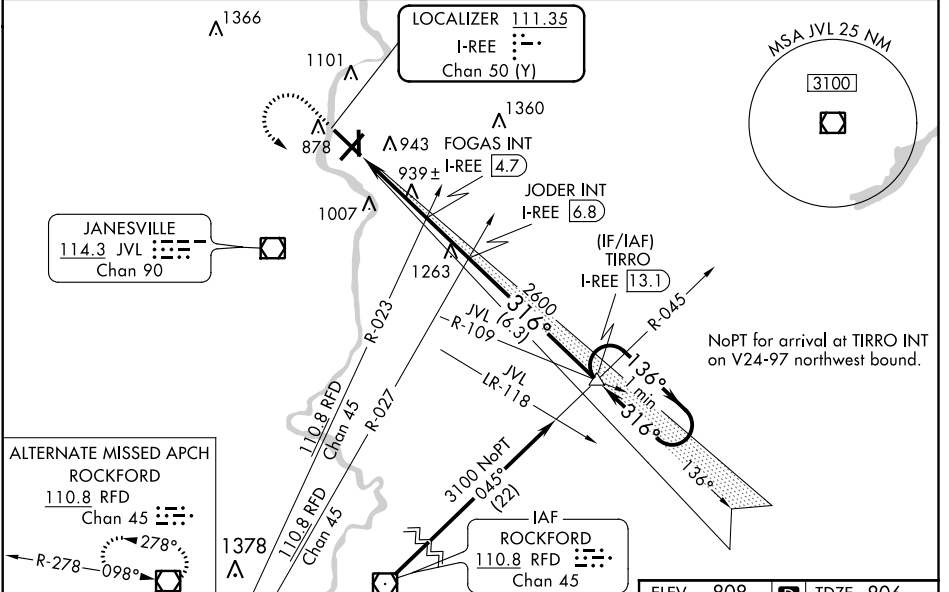
SOUTHERN WISCONSIN RGNL (JVL)

▼ Circling to Rwy 18 NA at night. When local altimeter setting not received, use Rockford Intl altimeter setting and increase DA to 1075, increase all MDA 80 feet. Increase FOGAS FIX minimums S-LOC 32 Cats C and D visibility ¼ mile. For inoperative MALSRR when using Rockford Intl altimeter setting, increase S-ILS-32 all Cats visibility to 1 mile. VDP NA when using Rockford Intl altimeter setting.

MALSRR

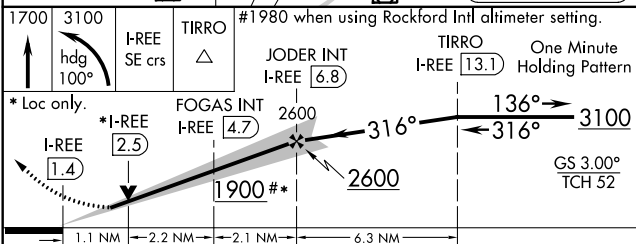
MISSED APPROACH: Climb to 1700 then climbing left turn to 3100 via heading 100° and I-REE SE course to TIRRO INT/13.1 DME and hold.

ATIS 128.25	ROCKFORD APP CON 121.0 327.0	JANESVILLE TOWER ★ 118.8(CTAF) 225.4	GND CON 121.65	CLNC DEL 121.65	UNICOM 122.95
-----------------------	--	--	--------------------------	---------------------------	-------------------------



ALTERNATE MISSED APCH
ROCKFORD
110.8 RFD
Chan 45

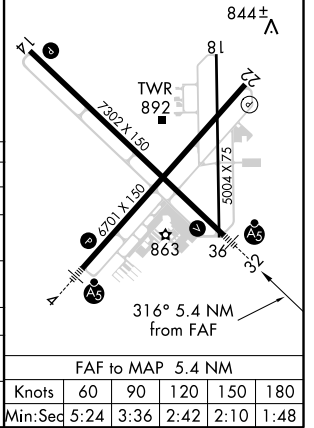
R-278 098°



ELEV 808	TDZE 806
----------	----------

HIRL Rwy 4-22 and 14-32
MIRL Rwy 18-36
REIL Rwy 14 and 22

CATEGORY	A	B	C	D
S-ILS 32		1006-½	200 (200-½)	
S-LOC 32	1900-¾ 1094 (1100-¾)	1900-1 1094 (1100-1)	1900-2½	1094 (1100-2½)
CIRCLING	1900-1¼ 1092 (1100-1¼)	1900-1½ 1092 (1100-1½)	1900-3	1092 (1100-3)
FOGAS FIX MINIMUMS (DUAL VOR RECEIVERS OR DME REQUIRED)				
S-LOC 32	1200-½	394 (400-½)		1200-¾ 394 (400-¾)
CIRCLING	1260-1	452 (500-1)	1280-1½ 472 (500-1½)	1420-2 612 (700-2)



FAF to MAP 5.4 NM					
Knots	60	90	120	150	180
Min:Seq	5:24	3:36	2:42	2:10	1:48

EC-3, 25 FEB 2021 to 25 MAR 2021

EC-3, 25 FEB 2021 to 25 MAR 2021