

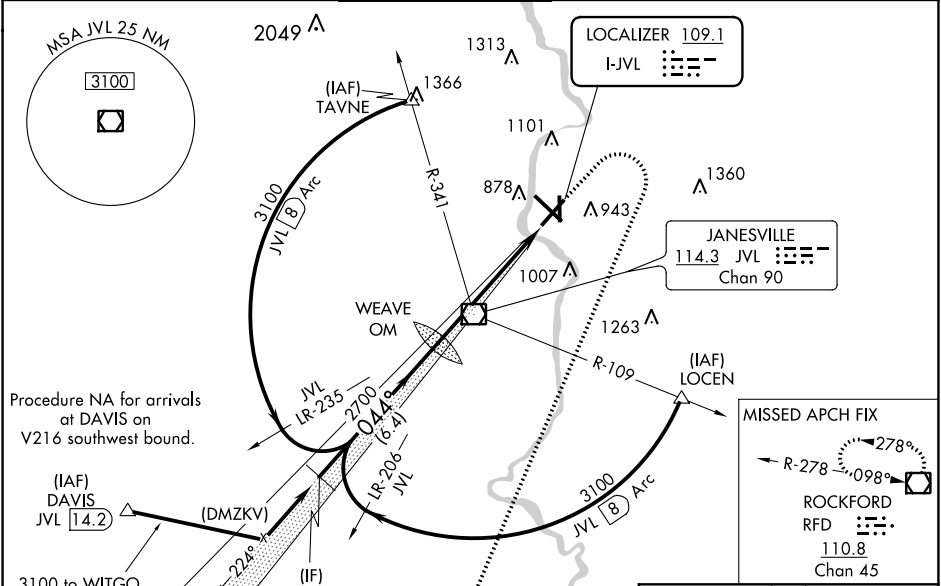
LOC I-JVL 109.1	APP CRS 044°	Rwy Idg 6701
		TDZE 806
		Apt Elev 808

ILS or LOC RWY 4
SOUTHERN WISCONSIN RGNL (JVL)

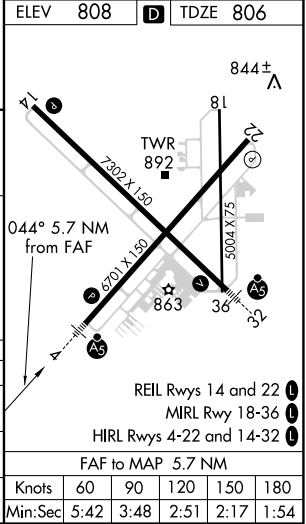
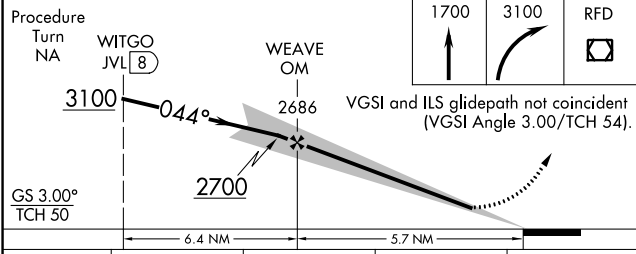
▼ Circling to Rwy 18 NA at night. When local altimeter setting not received, use Rockford altimeter setting and increase all DA 69 feet and all MDA 80 feet, increase S-LOC 4 Cats C/D and Circling Cat C visibility 1/2 mile, and Circling Cat D 1/4 mile. For inoperative MALSAR when using Rockford altimeter setting increase S-ILS 4 all Cats visibility to 1 mile.

MALSAR
 MISSED APPROACH: Climb to 1700 then climbing right turn to 3100 direct RFD VOR/DME and hold.

ATIS 128.25	ROCKFORD APP CON 121.0 327.0	JANESVILLE TOWER ★ 118.8(CTAF) 225.4	GND CON 121.65	CLNC DEL 121.65	UNICOM 122.95
-----------------------	--	--	--------------------------	---------------------------	-------------------------



ELEV 808	TDZE 806
----------	----------



CATEGORY	A	B	C	D
S-ILS 4	1006-1/2		200 (200-1/2)	
S-LOC 4	1400-1/2	594 (600-1/2)	1400-1	594 (600-1)
			1400-1 1/4	594 (600-1 1/4)
CIRCLING	1400-1	592 (600-1)	1400-1 1/2	1420-2
			592 (600-1 1/2)	612 (700-2)

EC-3, 25 FEB 2021 to 25 MAR 2021

EC-3, 25 FEB 2021 to 25 MAR 2021