

WAAS CH 86617 W14A	APP CRS 135°	Rwy Idg TDZE Apt Elev	7302 803 808
---------------------------------	------------------------	-----------------------------	---

RNAV (GPS) RWY 14

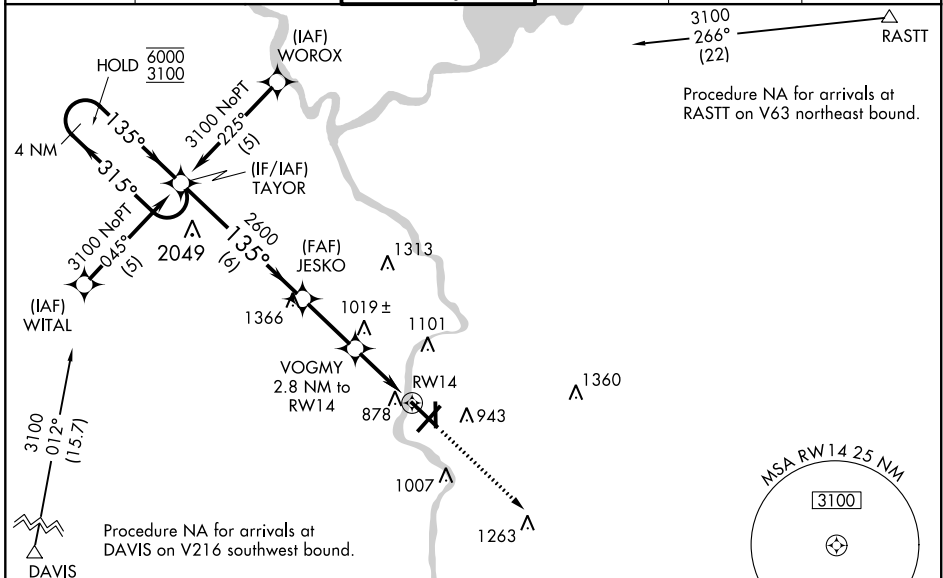
SOUTHERN WISCONSIN RGNL (JVL)

RNP APCH.

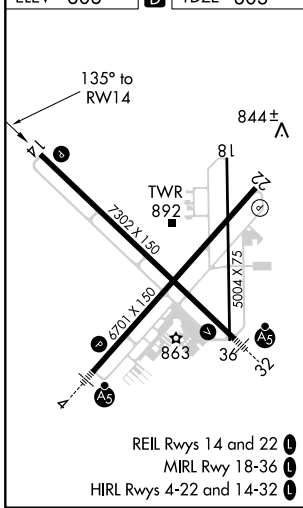
⚠ Circling Rwy 18 NA at night. Rwy 14 helicopter visibility reduction below 3/4 SM NA. Baro-VNAV NA when using Rockford altimeter setting. For uncompensated Baro-VNAV systems, LNAV/VNAV NA below -16°C or above 47°C. VDP NA when using Rockford altimeter setting. When local altimeter setting not received, use Rockford altimeter setting and increase all DA 69 feet and all MDA 80 feet; increase LPM all Cats, LNAV/VNAV all Cats, LNAV Cats C and D and Circling Cat D visibility 1/4 SM.

⚠ MISSED APPROACH: Climb to 3100 direct TIRRO and hold.

ATIS 128.25	ROCKFORD APP CON 121.0 327.0	JANESVILLE TOWER ★ 118.8(CTAF) 225.4	GND CON 121.65	CLNC DEL 121.65	UNICOM 122.95
-----------------------	--	--	--------------------------	---------------------------	-------------------------



ELEV 808	D	TDZE 803
----------	----------	----------



4 NM	TAYOR	JESKO	VOGMY	3100	TIRRO
6000 ← 315°	3100 → 135°	2600	2.8 NM to RW14	↑	△
GP 3.00° TCH 60	135°	1740	*1.3 NM to RW14	*LNAV only.	
6 NM		2.6 NM	1.5 NM	1.3 NM	
CATEGORY	A	B	C	D	
LPV DA	1003-3/4		200 (200-3/4)		
LNAV/VNAV DA	1222-1 1/2		419 (500-1 1/2)		
LNAV MDA	1280-1	477 (500-1)	1280-1 1/4	477 (500-1 1/2)	1280-1 1/2
CIRCLING	1280-1	472 (500-1)	1280-1 1/2	472 (500-1 1/2)	1420-2
				612 (700-2)	

EC-3, 25 FEB 2021 to 25 MAR 2021

EC-3, 25 FEB 2021 to 25 MAR 2021