

WAAS CH 40417 W22A	APP CRS 224°	Rwy Idg TDZE Apt Elev	6701 805 808
--	------------------------	-----------------------------	---

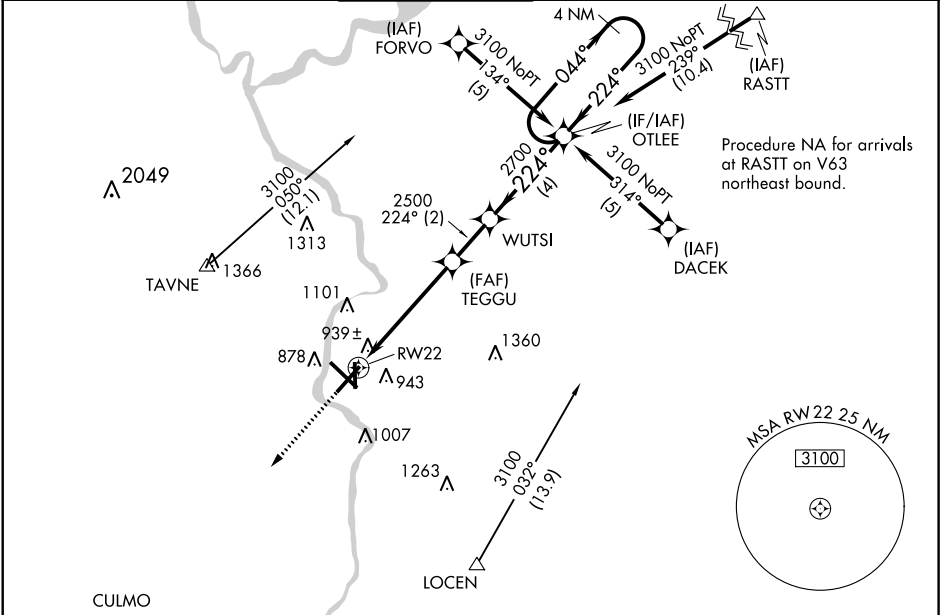
RNAV (GPS) RWY 22

SOUTHERN WISCONSIN RGNL (JVL)

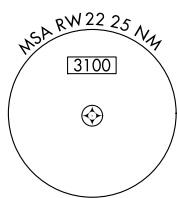
▼ Circling to Rwy 18 NA at night. Baro-VNAV NA when using Rockford altimeter setting. For uncompensated Baro-VNAV systems, LNAV/VNAV NA below -16°C (4°F) or above 47°C (116°F).
 ▲ DME/DME RNP-0.3 NA. Visibility reduction by helicopters NA. When local altimeter setting not received, use Rockford altimeter setting and increase all DA 69 feet and all MDA 80 feet; increase LPV all Cats visibility, LNAV/VNAV all Cats visibility and Circling Cat D visibility ¼ mile. VDP NA with Rockford altimeter setting.

MISSED APPROACH:
 Climb to 3100 direct CULMO and hold.

ATIS 128.25	ROCKFORD APP CON 121.0 327.0	JANESVILLE TOWER ★ 118.8(CTAF) 0 225.4	GND CON 121.65	CLNC DEL 121.65	UNICOM 122.95
-----------------------	--	--	--------------------------	---------------------------	-------------------------



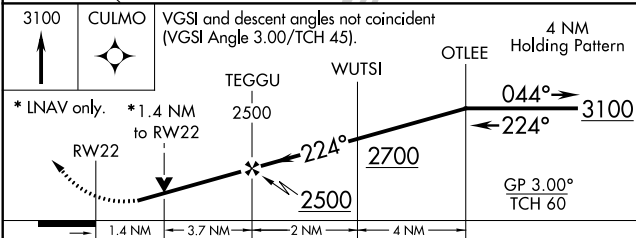
Procedure NA for arrivals at RASTT on V63 northeast bound.



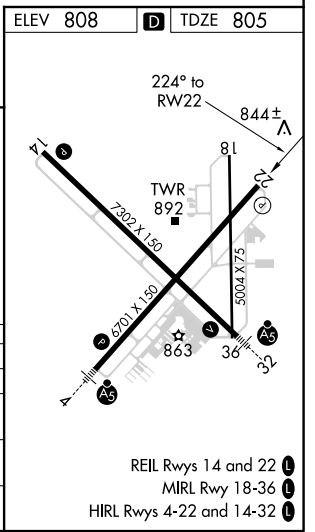
EC-3, 25 FEB 2021 to 25 MAR 2021

EC-3, 25 FEB 2021 to 25 MAR 2021

3100	CULMO	VGSI and descent angles not coincident (VGSI Angle 3.00/TCH 45).
↑	✦	



CATEGORY	A	B	C	D
LPV DA	1120-1		315 (400-1)	
LNAV/VNAV DA	1244-1½		439 (500-1½)	
LNAV MDA	1320-1	515 (600-1)	1320-1½ 515 (600-1½)	1320-1¾ 515 (600-1¾)
CIRCLING	1320-1	512 (600-1)	1320-1½ 512 (600-1½)	1420-2 612 (700-2)



REIL Rwy 14 and 22
 MIRL Rwy 18-36
 HIRL Rwy 4-22 and 14-32