

WAAS CH 82617 W04A	APP CRS 043°	Rwy Idg TDZE 806 Apt Elev 808	6701
--	------------------------	---	-------------

RNAV (GPS) RWY 4

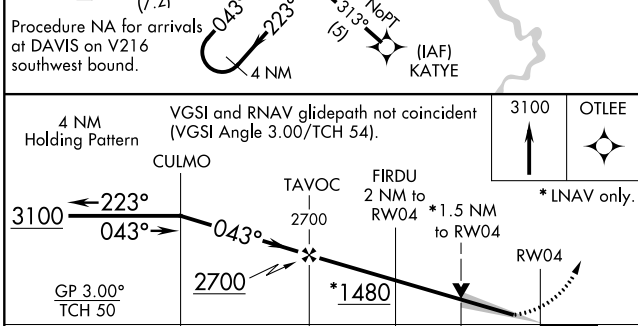
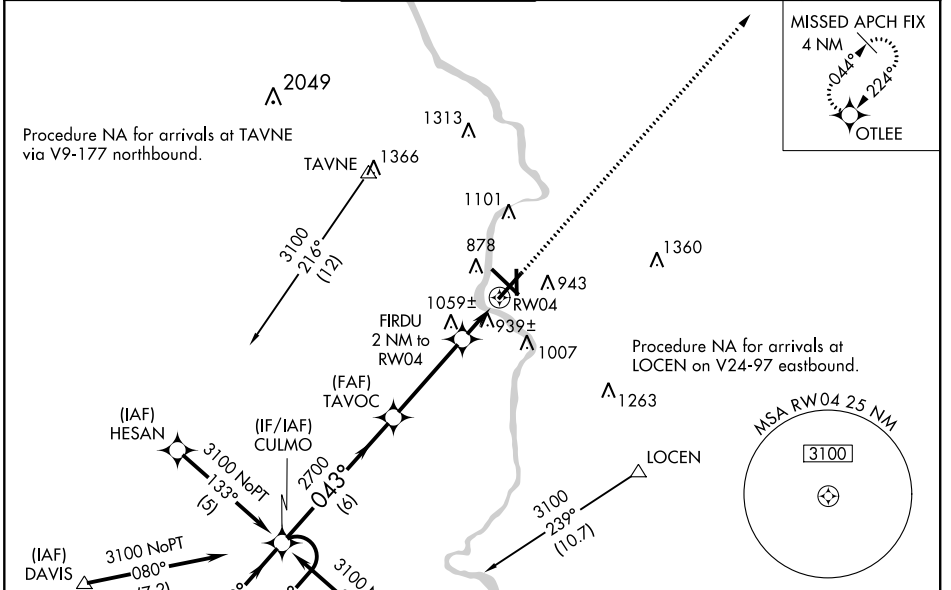
SOUTHERN WISCONSIN RGNL (JVL)

⚠ Circling to Rwy 18 NA at night. Baro-VNAV NA when using Rockford altimeter setting. For uncompensated Baro-VNAV systems, LNAV/VNAV NA below -1.6°C (4°F) or above 47°C (116°F). DME/DME RNP-0.3 NA. VDP NA with Rockford altimeter setting. When local altimeter setting not received, use Rockford altimeter setting and increase all DA 69 feet and all MDA 80 feet; increase LNAV/VNAV all Cats visibility ¼ mile and Circling Cat D visibility ¼ mile. For inoperative MALSR, when using Rockford altimeter setting increase LPV all Cats visibility to 1 mile.

MALSR

MISSED APPROACH:
Climb to 3100 direct OTLEE and hold.

ATIS 128.25	ROCKFORD APP CON 121.0 327.0	JANESVILLE TOWER ★ 118.8 (CTAF) 0 225.4	GND CON 121.65	CLNC DEL 121.65	UNICOM 122.95
-----------------------	--	---	--------------------------	---------------------------	-------------------------



ELEV 808	D TDZE 806
----------	-------------------

REIL Rws 14 and 22
MIRL Rwy 18-36
HIRL Rws 4-22 and 14-32

CATEGORY	A	B	C	D
LPV DA		1006-½	200 (200-½)	
LNAV/VNAV DA		1245-1	439 (500-1)	
LNAV MDA	1320-½ 514 (600-½)		1320-1 514 (600-1)	1320-1¼ 514 (600-1¼)
CIRCLING	1320-1 512 (600-1)		1320-1½ 512 (600-1½)	1420-2 612 (700-2)

EC-3, 25 FEB 2021 to 25 MAR 2021

EC-3, 25 FEB 2021 to 25 MAR 2021