

LOC/DME I-ALO 111.7 Chan 54	APP CRS 308°	Rwy Idg TDZE Apt Elev	8399 868 873
---	------------------------	-----------------------------	---

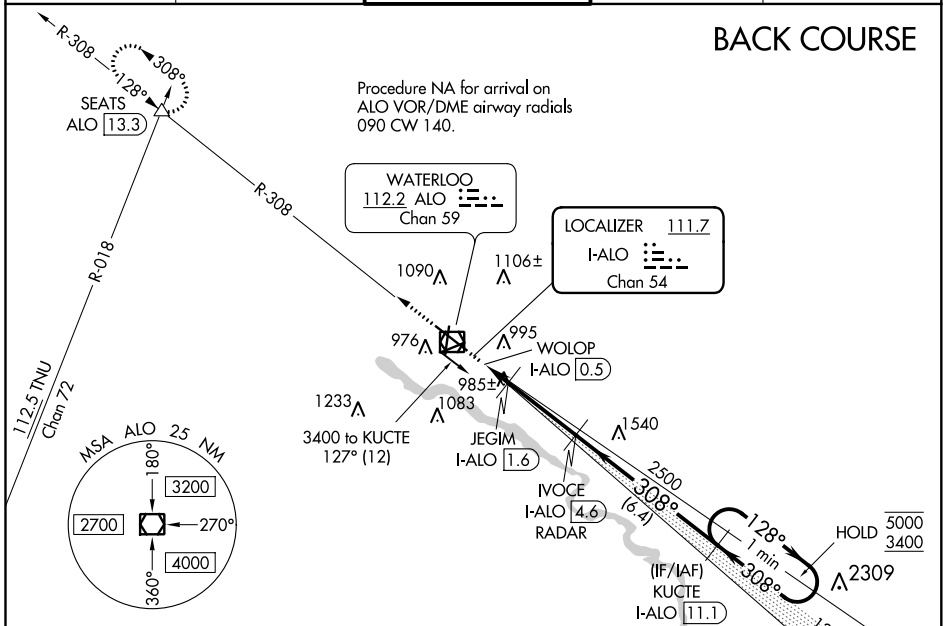
LOC BC RWY 30

WATERLOO RGNL (A.LO)

DME required.		MALS	MISSED APPROACH: Climb to 3500 on ALO VOR/DME R-308 to SEATS INT/ALO 13.3 DME and hold.
---------------	--	------	---

ATIS 120.65	WATERLOO APP CON* 118.9 251.15	WATERLOO TOWER* 125.075 (CTAF) 257.8	GND CON 121.9 269.1	UNICOM 122.95
-----------------------	--	--	-------------------------------	-------------------------

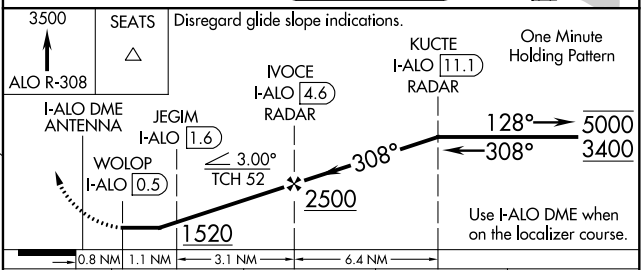
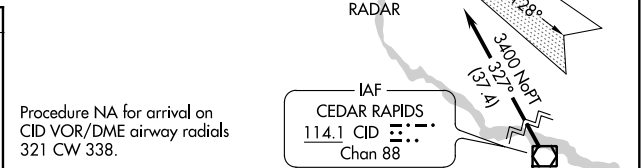
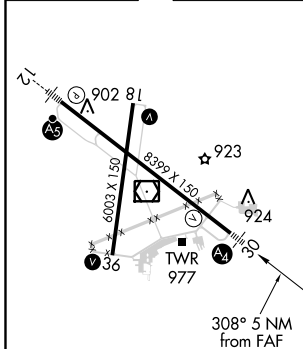
BACK COURSE



NC-3, 25 FEB 2021 to 25 MAR 2021

NC-3, 25 FEB 2021 to 25 MAR 2021

ELEV 873	D	TDZE 868
----------	----------	----------



FAF to MAP 4.1 NM	SEATS	WOLOP I-ALO 0.5	JEGIM I-ALO 1.6	IVOICE I-ALO 4.6	KUCTE I-ALO 11.1
Knots	60	90	120	150	180
Min:Sec	4:06	2:44	2:03	1:38	1:22
CATEGORY	A	B	C	D	
S-LOC 30	1360-1	1400-1	1480-1 3/4	1600-2 1/4	
C CIRCLING	487 (500-1)	527 (600-1)	607 (700-1 3/4)	727 (800-2 1/4)	