

WAAS CH <b>50115</b> <b>W11A</b>	APP CRS <b>106°</b>	Rwy Idg TDZE Apt Elev	<b>7504</b> <b>147</b> <b>151</b>
--	------------------------	-----------------------------	---

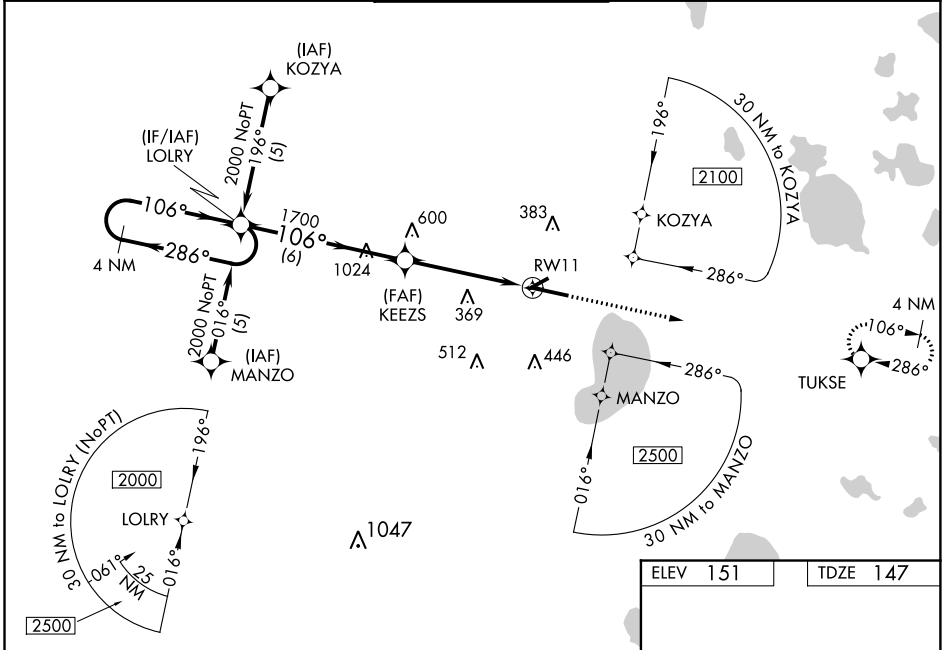
# RNAV (GPS) RWY 11

GAINESVILLE RGNL (GTV)

**⚠** For uncompensated Baro-VNAV systems, LNAV/VNAV NA below -15° C (5° F) or above 48° C (120° F). DME/DME RNP-0.3 NA. When local altimeter setting not received, use Ocala Intl-Jim Taylor Field altimeter setting and increase all DA 81 feet and all MDA 100 feet. Increase LPV all Cats and LNAV/VNAV all Cats visibility ½ mile. Increase LNAV Cat C and Cat D, and Circling Cat D visibility ¼ mile. Visibility reduction by helicopters NA. Baro-VNAV NA when using Ocala Intl-Jim Taylor Field altimeter setting. When VGSI inoperative, Circling Rwy 25 NA at night. VDP NA when using Ocala Intl-Jim Taylor Field altimeter setting.

MISSED APPROACH: Climb to 2000 direct TUKSE and hold.

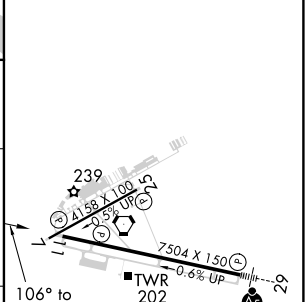
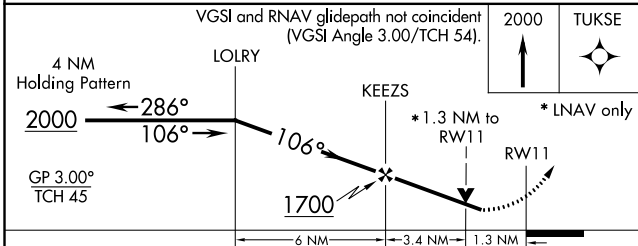
ATIS <b>127.15</b>	JACKSONVILLE APP CON <b>118.175 338.25</b>	GAINESVILLE TOWER★ <b>119.55 (CTAF) 0 353.7</b>	GND CON <b>121.7</b>	UNICOM <b>122.95</b>
-----------------------	---	--	-------------------------	-------------------------



SE-3, 25 FEB 2021 to 25 MAR 2021

SE-3, 25 FEB 2021 to 25 MAR 2021

ELEV 151	TDZE 147
----------	----------



CATEGORY	A	B	C	D
LPV DA	460-1 313 (400-1)			
LNAV/DA VNAV	600-1½ 453 (500-1½)			
LNAV MDA	600-1 453 (500-1)	600-1¼ 453 (500-1¼)		600-1½ 453 (500-1½)
CIRCLING	620-1 469 (500-1)	620-1½ 469 (500-1½)		740-2 589 (600-2)

REIL Rwy 11  
MIRL Rwy 7-25  
HIRL Rwy 11-29