


LOC I-BER	APP CRS	Rwy ldg	6190
108.9	234°	TDZE	18
		Apt Elev	20

ILS Y or LOC Y RWY 23

ADAK (ADK) (PADK)

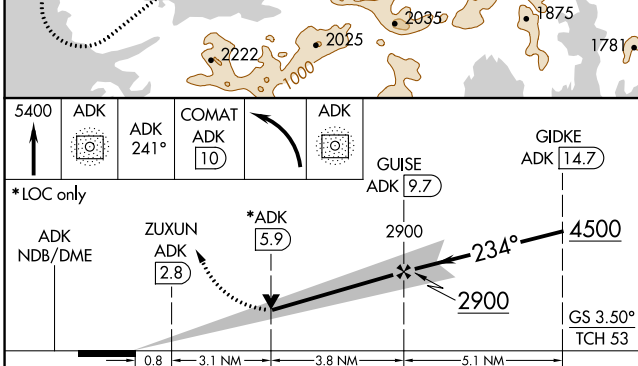
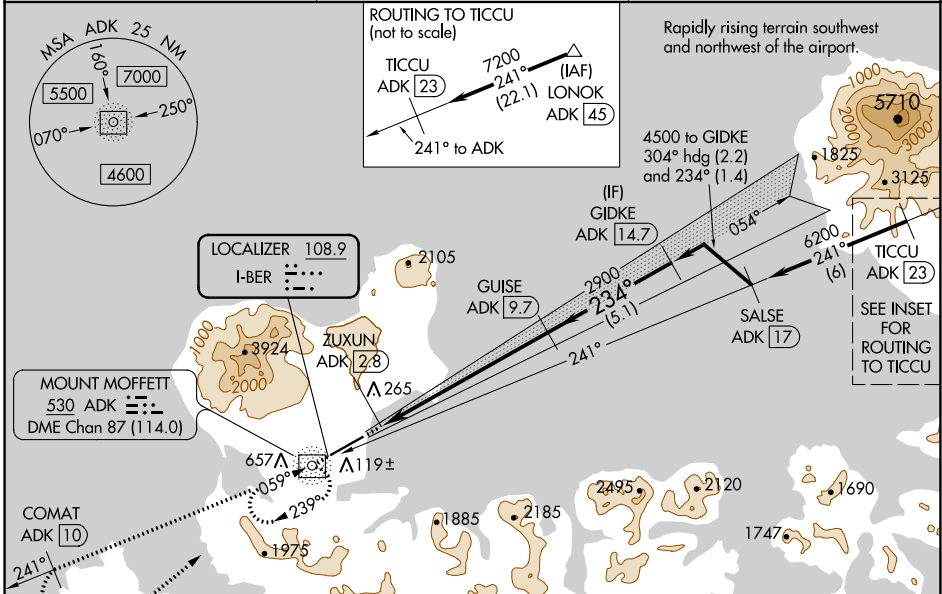
ADF and DME required.

⚠ Circling NA at night. Circling NA northwest of Rwy 5-23.
⚠ Rwy 23 helicopter visibility reduction below 3/4 SM NA.
 DME from ADK NDB/DME. Simultaneous reception of I-BER and ADK DME required. Cat E for USAF/USN use only.

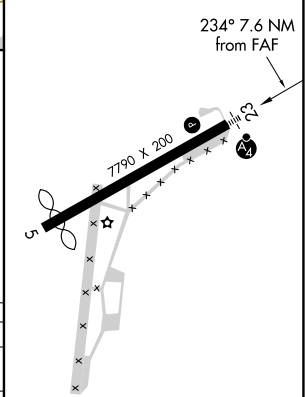
MALS 

MISSED APPROACH: Climb to 5400 direct ADK NDB/DME and on the 241° bearing from ADK NDB/DME to COMAT/ADK 10 DME and left turn direct ADK NDB/DME and hold.

AWOS-3P 134.5	ANCHORAGE CENTER 126.4 254.3	CTAF 122.9 0
-------------------------	----------------------------------------	------------------------



ELEV 20	D TDZE 18
---------	------------------



CATEGORY	A	B	C	D	E
S-ILS 23	1572-5 1554 (1600-5)				
S-LOC 23	1520-1¼ 1502 (1500-1¼)	1520-1½ 1502 (1500-1½)	1520-3 1502 (1500-3)		
C CIRCLING	1520-1¼ 1500 (1500-1¼)	1520-1½ 1500 (1500-1½)	1520-3 1500 (1500-3)	2400-3 2380 (2400-3)	2440-3 2420 (2500-3)

REIL Rwy 23 **0**
 HIRL Rwy 5-23 **0**

AK, 25 FEB 2021 to 22 APR 2021

AK, 25 FEB 2021 to 22 APR 2021