

(JALEX3.JALEX) 18312

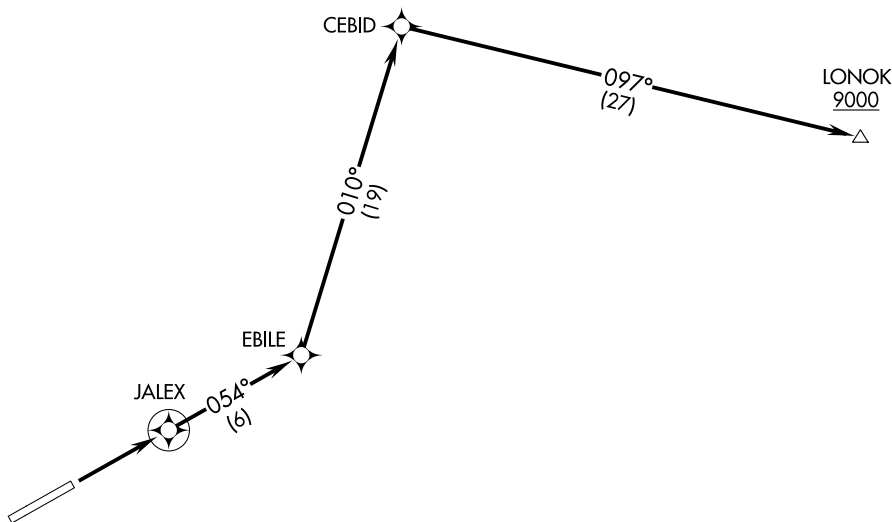
JALEX THREE DEPARTURE (RNAV)

AL-1244 (FAA)

ADAK (ADK)(PADK)
ADAK ISLAND, ALASKA

ANCHORAGE CENTER
126.4 254.3
CTAF
122.9

**TOP ALTITUDE:
ASSIGNED BY ATC**



AK, 25 FEB 2021 to 22 APR 2021

AK, 25 FEB 2021 to 22 APR 2021

NOTE: GPS required.
NOTE: RNAV 1.

TAKEOFF MINIMUMS

Rwy 23: NA-ATC.

Rwy 5: Standard with minimum climb of 253' per NM to 900.

NOTE: Chart not to scale.



DEPARTURE ROUTE DESCRIPTION

TAKEOFF RUNWAY 5: Climb to 9000 or ATC assigned higher altitude direct JALEX then on track 054° to EBILE, then on track 010° to CEBID, then on track 097° to cross LONOK at or above 9000 before proceeding on course.

JALEX THREE DEPARTURE (RNAV)

(JALEX3.JALEX) 08NOV18

ADAK ISLAND, ALASKA
ADAK (ADK)(PADK)