

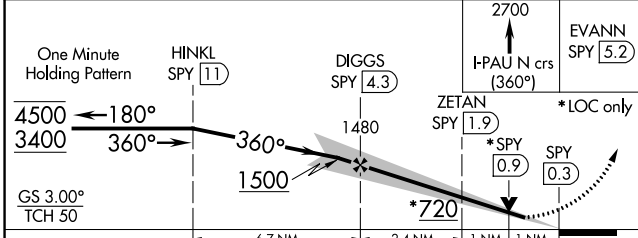
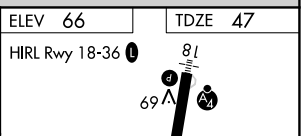
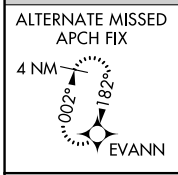
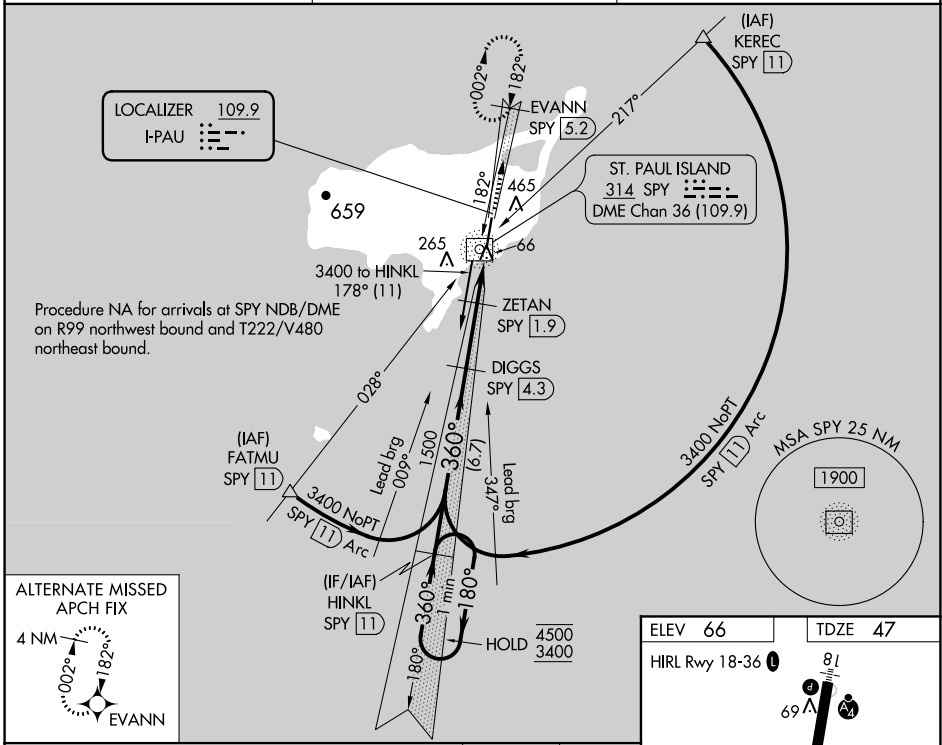
LOC I-PAU <b>109.9</b>	APP CRS <b>360°</b>	Rwy Idg TDZE Apt Elev	<b>6500</b> <b>47</b> <b>66</b>
---------------------------	------------------------	-----------------------------	---------------------------------------

# ILS or LOC RWY 36

ST PAUL ISLAND (SNP) (PASN)

ADF and DME required for procedure entry. DME required.	MALSF	MISSED APPROACH: Climb to 2700 on I-PAU north course (360°) to EVANN/SPY 5.2 DME and hold, continue climb-in-hold to 2700.
<p><b>V</b> Circling NA west of Rwy 18-36. Inop table does not apply to S-ILS.</p> <p><b>A</b> When local altimeter setting not received, procedure NA. DME from SPY NDB/DME. Simultaneous reception of I-PAU and SPY DME required.</p>		

ASOS <b>135.75</b>	ANCHORAGE CENTER <b>119.1 339.8</b>	CTAF <b>122.3</b> <b>0</b>
-----------------------	--	-------------------------------



CATEGORY	A	B	C	D
S-ILS 36		247- <sup>3</sup> / <sub>4</sub>	200 (200- <sup>3</sup> / <sub>4</sub> )	
S-LOC 36		380- <sup>3</sup> / <sub>4</sub>	333 (400- <sup>3</sup> / <sub>4</sub> )	
<b>C</b> CIRCLING	800-1 734 (800-1)		800-2 734 (800-2)	800-2 <sup>1</sup> / <sub>4</sub> 734 (800-2 <sup>1</sup> / <sub>4</sub> )

ELEV 66	TDZE 47
HIRL Rwy 18-36	
FAF to MAP 4.4 NM 360° 4.4 NM from FAF	
Knots	60 90 120 150 180
Min:Sec	4:24 2:56 2:12 1:46 1:28

AK, 25 FEB 2021 to 22 APR 2021

AK, 25 FEB 2021 to 22 APR 2021