

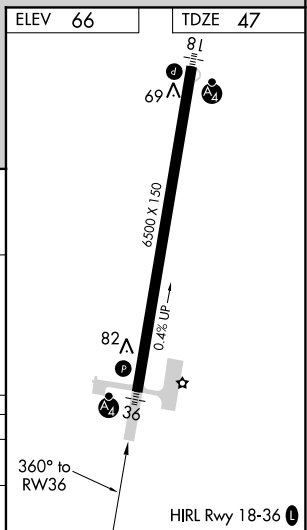
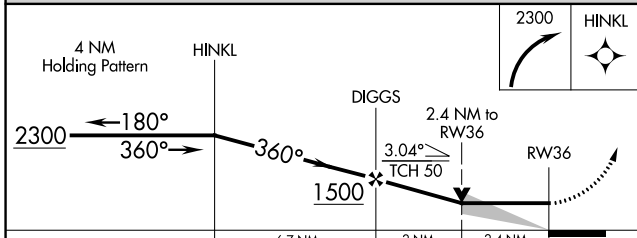
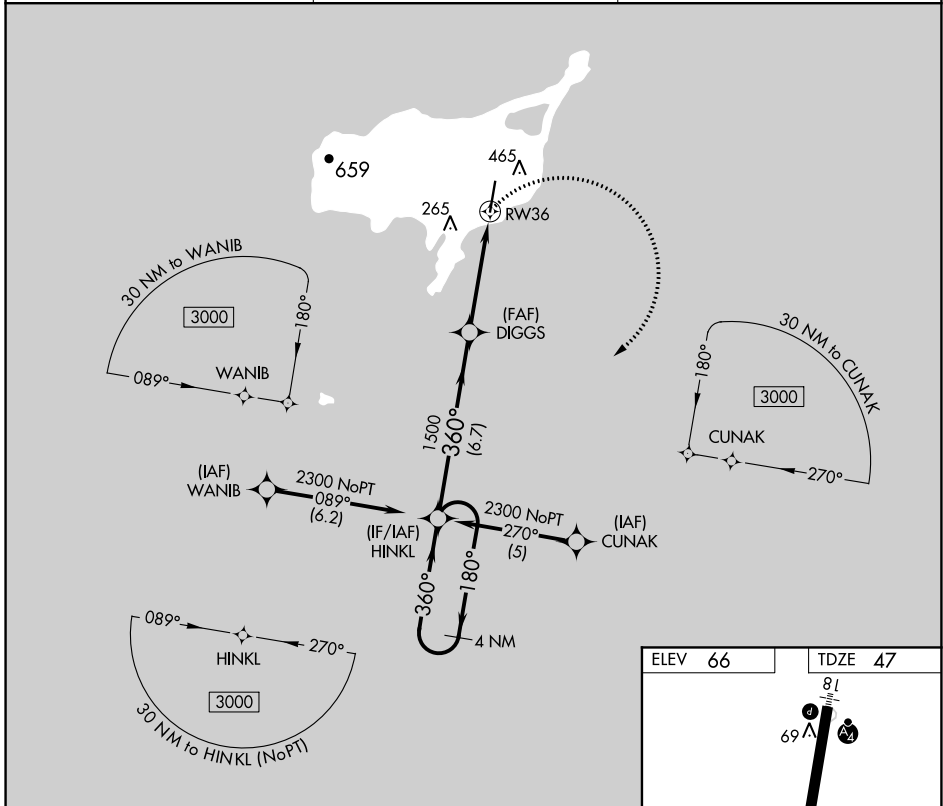
APP CRS <b>360°</b>	Rwy Idg <b>6500</b>
	TDZE <b>47</b>
	Apt Elev <b>66</b>

# RNAV (GPS) RWY 36

ST PAUL ISLAND (SNP) (PASN)

RNP APCH.	MALSF	MISSED APPROACH: Climbing right turn to 2300 direct HINKL and hold.
<p>▼ Inoperative table does not apply.</p> <p>▲ Circling NA west of Rwy 18-36.</p>		

ASOS <b>135.75</b>	ANCHORAGE CENTER <b>119.1 339.8</b>	CTAF <b>122.3</b>
-----------------------	--	----------------------



CATEGORY	A	B	C	D
LNVA MDA	840-1 793 (800-1)	840-1¼ 793 (800-1¼)	840-2¼ 793 (800-2¼)	840-2½ 793 (800-2½)
CIRCLING	840-1 774 (800-1)	840-1¼ 774 (800-1¼)	840-2¼ 774 (800-2¼)	840-2½ 774 (800-2½)

AK, 25 FEB 2021 to 22 APR 2021

AK, 25 FEB 2021 to 22 APR 2021