

WAAS CH 69223 W05A	APP CRS 054°	Rwy Idg TDZE Apt Elev	3318 1224 1224
----------------------------------------	------------------------	-----------------------------	-------------------------------------------

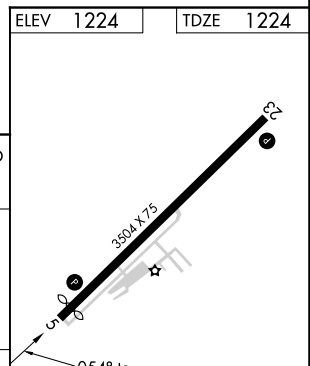
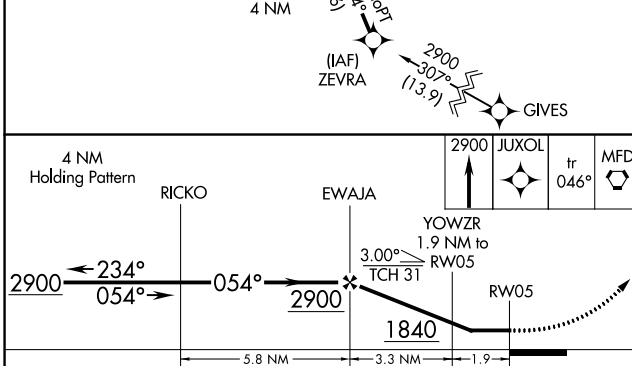
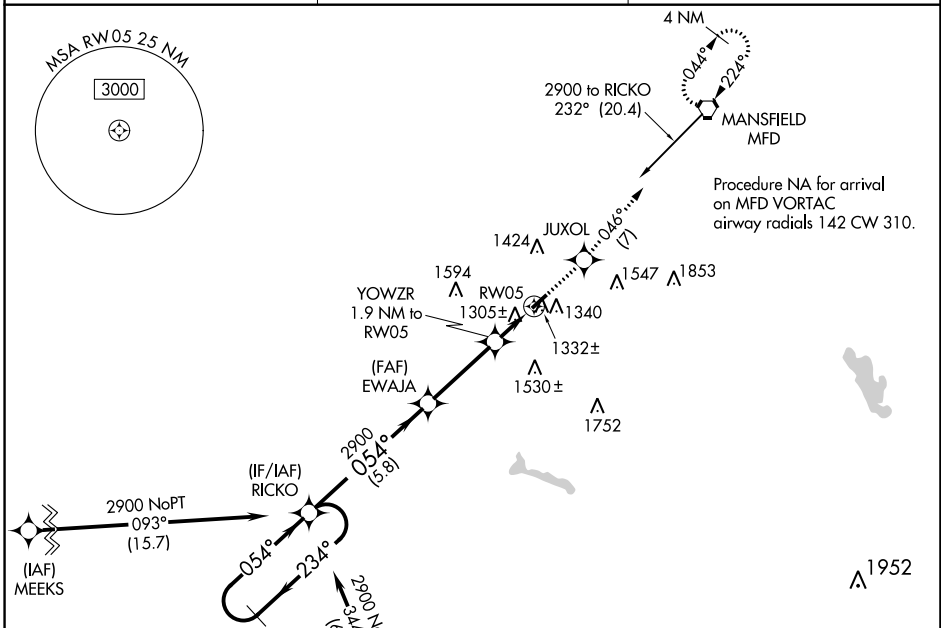
RNAV (GPS) RWY 5

GALLION MUNI (GQQ)

NA Helicopter visibility reduction below 1 SM NA.
DME/DME RNP-0.3 NA. Use Mansfield altimeter setting.
Straight-in Rwy 5 NA at night, Circling Rwy 5 NA at night.

MISSED APPROACH: Climb to 2900 direct JUXOL and on track 046° to MFD VORTAC and hold.

CLEVELAND APP CON ★ 124.2 360.65	CLNC DEL 126.8	UNICOM 122.8 (CTAF) 1
--------------------------------------------	--------------------------	---------------------------------



CATEGORY	A	B	C	D
LP MDA	1600-1	376 (400-1)		NA
LNAV MDA	1620-1	396 (400-1)	1620-1½ 396 (400-1½)	NA
CIRCLING	1800-1	576 (600-1)	1800-1½ 576 (600-1½)	NA

MIRL Rwy 5-23 1
REL Rwys 5 and 23 1

EC-2, 25 FEB 2021 to 25 MAR 2021

EC-2, 25 FEB 2021 to 25 MAR 2021