

VORTAC MFD 108.8 Chan 25	APP CRS 224°	Rwy Idg TDZE Apt Elev 3504 1224 1224
--	------------------------	--

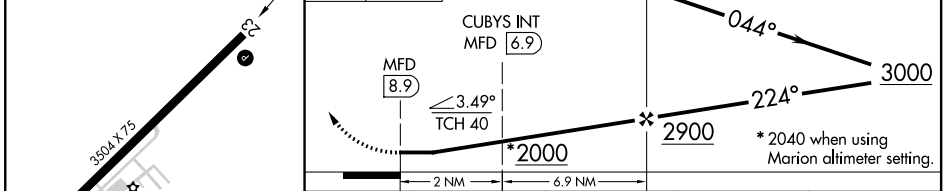
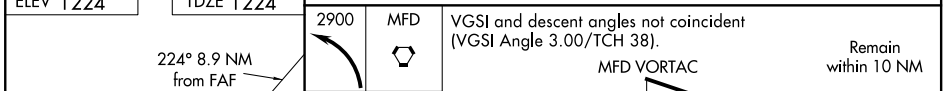
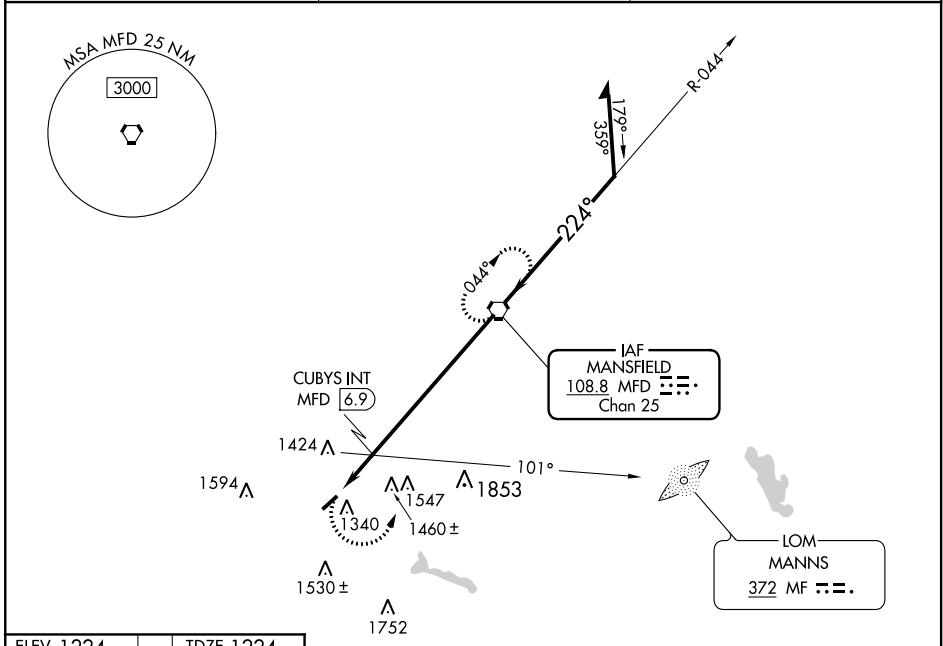
VOR RWY 23
GALLION MUNI (GQQ)

RADAR required for procedure entry.

Procedure NA at night. Use Mansfield altimeter setting; when not received, use Marion altimeter setting and increase all MDA 40 feet and increase CUBYS fix minimums S-23 and Circling Cat C visibility 1/2 SM. Rwy 23 helicopter visibility reduction below 1 SM NA.

MISSED APPROACH: Climbing left turn to 2900 direct MFD VORTAC and hold.

CLEVELAND APP CON ★ 124.2 360.65	CLNC DEL 126.8	UNICOM 122.8 (CTAF) 0
--	--------------------------	---------------------------------



CATEGORY	A		B		C		D	
	Min	Sec	Min	Sec	Min	Sec	Min	Sec
S-23	2000-1	776 (800-1)	2000-1¼	776 (800-1¼)	2000-2½	776 (800-2½)	NA	
CIRCLING	2000-1	776 (800-1)	2000-1¼	776 (800-1¼)	2000-2½	776 (800-2½)	NA	
CUBYS FIX MINIMUMS								
S-23	1760-1	536 (600-1)	1760-1½	536 (600-1½)	NA			
CIRCLING	1800-1	576 (600-1)	1800-1½	576 (600-1½)	NA			

REIL Rwys 5 and 23
MIRL Rwy 5-23

FAF to MAP 8.9 NM

Knots	60	90	120	150	180
Min:Sec	8:54	5:56	4:27	3:34	2:58

EC-2, 25 FEB 2021 to 25 MAR 2021

EC-2, 25 FEB 2021 to 25 MAR 2021