


LOC I-ECC 110.1	APP CRS 200°	Rwy Idg TDZE Apt Elev	8653 5605 5622
---------------------------	------------------------	-----------------------------	---

ILS or LOC RWY 20

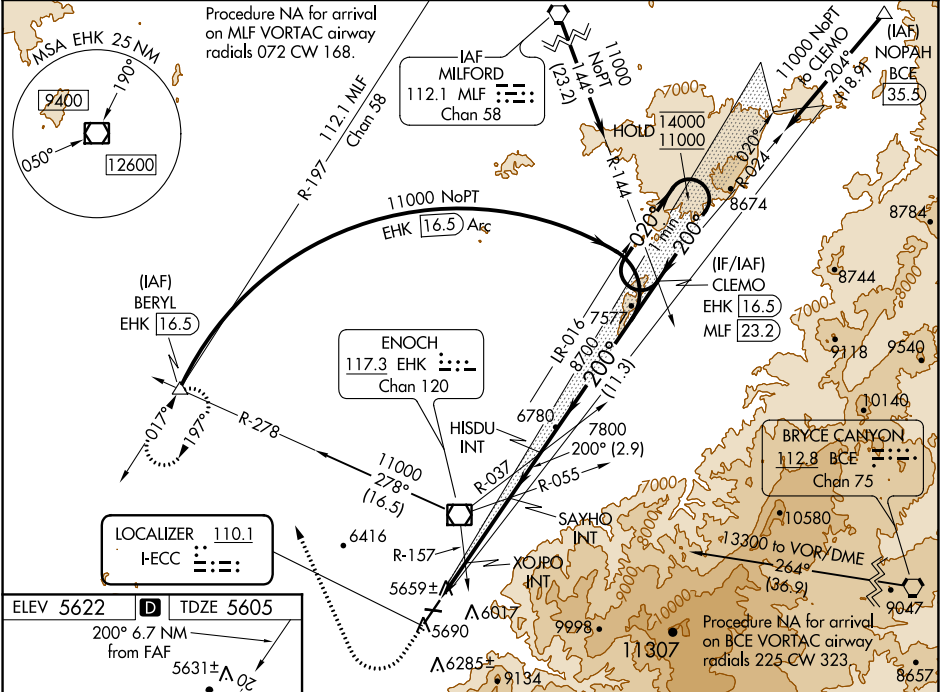
CEDAR CITY RGNL (CDC)

DME required.

NA XOJPO fix minimums (Dual VOR receivers required): For inop ALS, increase S-LOC 20 Cats C/D visibility to 1½ SM. For inop ALS, increase S-LOC 20 Cats C/D visibility to 2½ SM.
#For inop ALS, increase S-ILS 20 visibility all Cats to 1 SM.

MALSR
 MISSED APPROACH: Climb to 6200 then climbing right turn to 10000 on heading 322° and on EHK R-278 to BERYL INT/EHK 16.5 DME and hold, continue climb-in-hold to 10000.
 † Missed approach requires minimum climb of 210 feet per NM to 7300.

ASOS 119.025	SALT LAKE CITY CENTER 125.575 379.275	UNICOM 123.0 (CTAF) 0
------------------------	---	---------------------------------



ELEV 5622 TDZE 5605

200° 6.7 NM from FAF

5631±

4822 X 60 0.9% UP

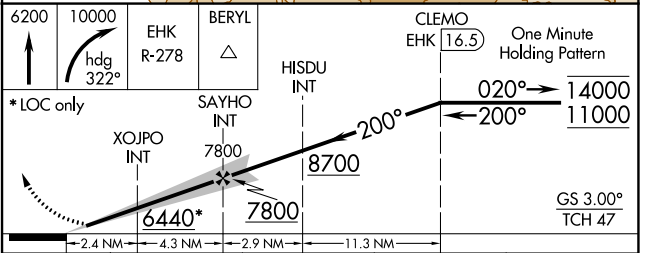
8653 X 150 0.4% UP

HIRL Rwy 2-20

MIRL Rwy 8-26

REIL Rwys 2, 8 and 26

Knots	60	90	120	150	180
Min:Sec	6:42	4:28	3:21	2:41	2:14



CATEGORY	A	B	C	D
S-ILS 20†		5825-½	220 (300-½)	
S-ILS 20#		5882-½	277 (300-½)	
S-LOC 20	6440-½ 835 (900-½)	6440-¾ 835 (900-¾)	6440-1⅞ 835 (900-1⅞)	
XOJPO FIX MINIMUMS (DUAL VOR RECEIVERS REQUIRED)				
S-LOC 20	6100-½	495 (500-½)	6100-1	495 (500-1)

SW-4, 25 FEB 2021 to 25 MAR 2021

SW-4, 25 FEB 2021 to 25 MAR 2021