

|  |                        |                             |   |
|--|------------------------|-----------------------------|---|
| WAAS<br>CH <b>50311</b><br><b>W05A</b> | APP CRS<br><b>050°</b> | Rwy Idg<br>TDZE<br>Apt Elev | <b>3999</b><br><b>1906</b><br><b>1915</b> |
|--|------------------------|-----------------------------|---|

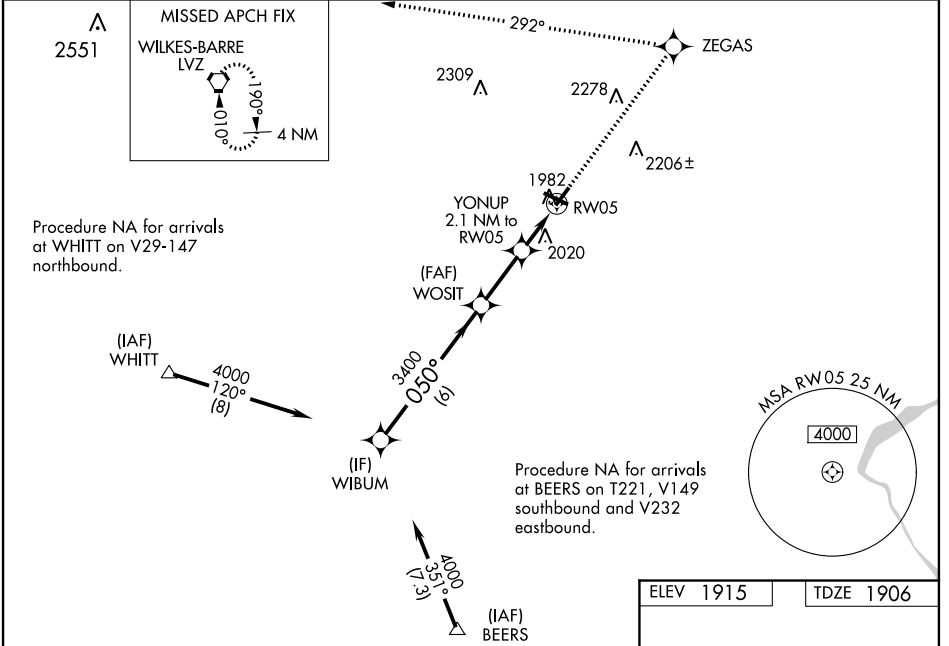
# RNAV (GPS) RWY 5

POCONO MOUNTAINS MUNI (MPO)

**⚠** Baro-VNAV NA when using Wilkes-Barre/Scranton altimeter setting. For uncorrected Baro-VNAV systems, LNAV/VNAV NA below -18°C (0°F) or above 45°C (113°F).  
**⚠** DME/DME RNP-0.3 NA. Rwy 5 helicopter visibility reduction below ¾ SM NA. When local altimeter setting not received, use Wilkes-Barre/Scranton altimeter setting: increase LPV DA to 2339 feet, LNAV/VNAV DA to 2431 feet and all visibilities ¼ SM; increase all MDAs 180 feet and visibility Cat C and D ½ SM. Circling Rwy 23 NA at night.

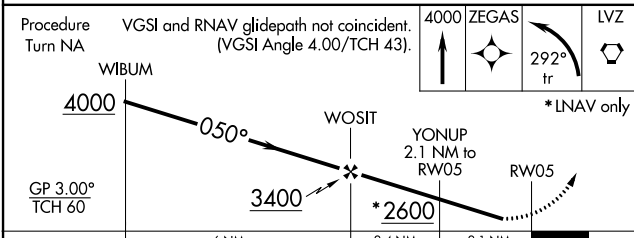
**MISSED APPROACH:**  
 Climb to 4000 direct ZEGAS and left turn via 292° track to LVZ VORTAC and hold.

|                        |  |                          |  |
|------------------------|--|--------------------------|--|
| ASOS<br><b>120.275</b> | WILKES-BARRE APP CON<br><b>126.3 256.7</b> | CLNC DEL<br><b>125.3</b> | UNICOM<br><b>122.7 (CTAF)</b> <b>📶</b> |
|------------------------|--|--------------------------|--|



NE-4, 25 FEB 2021 to 25 MAR 2021

NE-4, 25 FEB 2021 to 25 MAR 2021



| CATEGORY          | A                     | B                     | C                     | D                       |
|-------------------|-----------------------|-----------------------|-----------------------|-------------------------|
| LPV DA            |                       | 2160-1                | 254 (300-1)           |                         |
| LNAV/VNAV DA      |                       | 2252-1¼               | 346 (400-1¼)          |                         |
| LNAV MDA          | 2320-1                | 414 (500-1)           | 2320-1¼               | 414 (500-1¼)            |
| <b>📶</b> CIRCLING | 2480-1<br>565 (600-1) | 2500-1<br>585 (600-1) | 2600-2<br>685 (700-2) | 2660-2½<br>745 (800-2½) |

