

LOC I-TMB 108.7	APP CRS 093°	Rwy Idg 6000 TDZE 10 Apt Elev 10
---------------------------	------------------------	-------------------------------------------------------------

ILS or LOC RWY 9R

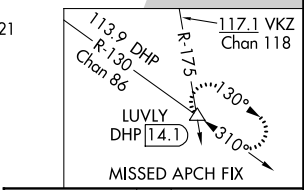
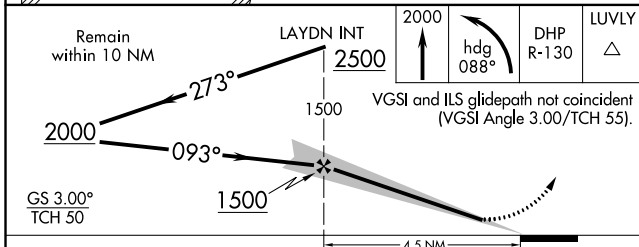
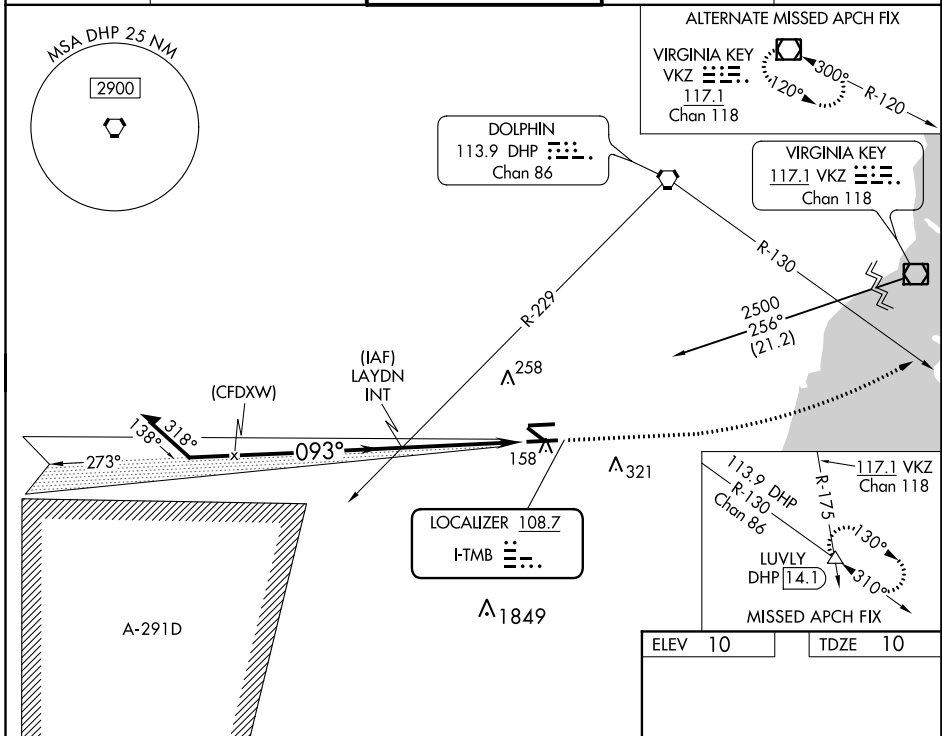
MIAMI EXECUTIVE (TMB)

⚠ Circling Rwy 13, 31 NA at night. For inop ALS when using Miami Intl altimeter setting, increase Cat C/D visibility to 1 3/8 SM. When local altimeter setting not received, use Miami Intl altimeter setting and increase S-ILS 9R DA to 237 feet and all MDA 40 feet, increase S-LOC 9R Cat C/D visibility 1/8 SM.

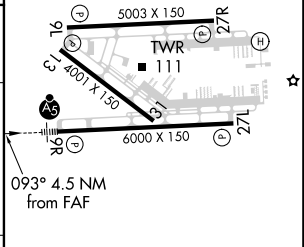
MALSR
A5

MISSED APPROACH: Climb to 2000 then left turn on heading 088° and DHP VORTAC R-130 to LUVLY INT/DHP 14.1 DME and hold.

ATIS 124.0	MIAMI APP CON 125.5 354.1	TAMIAMI TOWER ★ 118.9 (CTAF) 0	GND CON 121.7	CLNC DEL 133.0
----------------------	-------------------------------------	-------------------------------------------------	-------------------------	--------------------------



ELEV 10	TDZE 10
---------	---------



CATEGORY	A	B	C	D
S-ILS 9R		210-1/2	200 (200-1/2)	
S-LOC 9R	460-1/2	450 (500-1/2)	460-7/8	450 (500-7/8)
CIRCLING	460-1	450 (500-1)	460-1 1/2	640-2
			450 (500-1 1/2)	630 (700-2)

REIL Rwy 13
HIRL Rwy 9R-27L **0**
MIRL Rwy 9L-27R
MIRL Rwy 13-31 **0**

FAF to MAP 4.5 NM

Knots	60	90	120	150	180
Min:Seq	4:30	3:00	2:15	1:48	1:30

SE-3, 25 FEB 2021 to 25 MAR 2021

SE-3, 25 FEB 2021 to 25 MAR 2021