

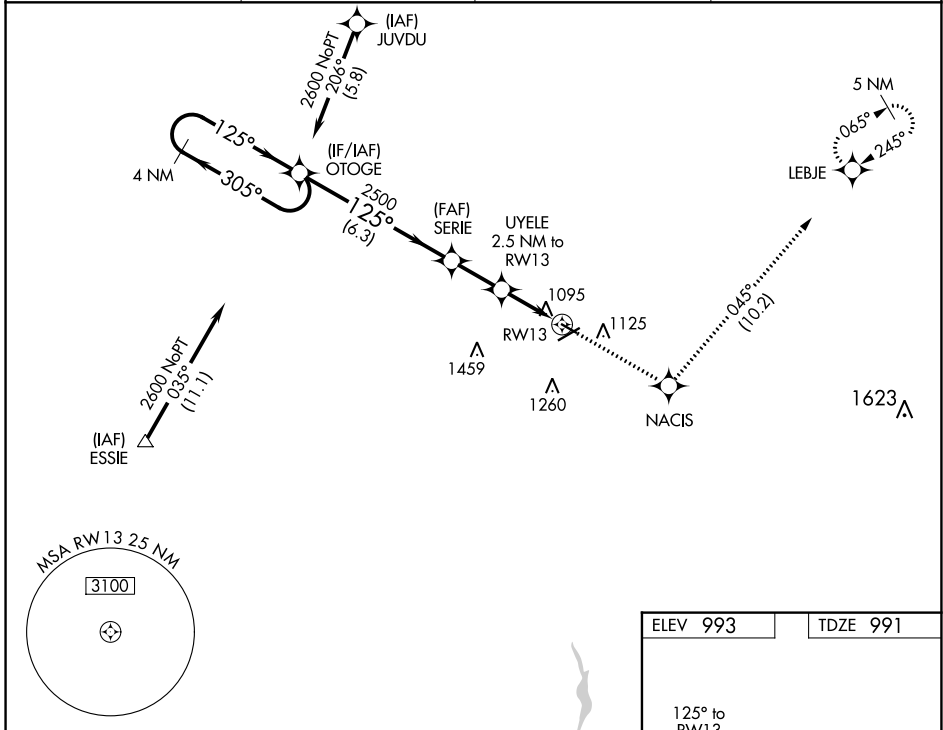
APP CRS	Rwy Idg	3498
125°	TDZE	991
	Apt Elev	993

RNAV (GPS) RWY 13

MARION MUNI (MNN)

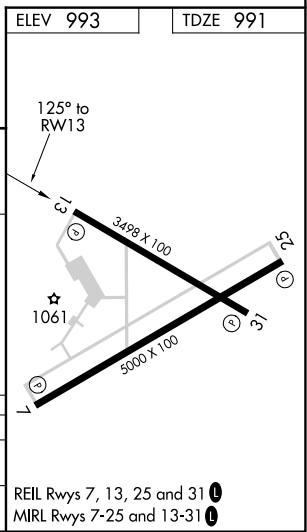
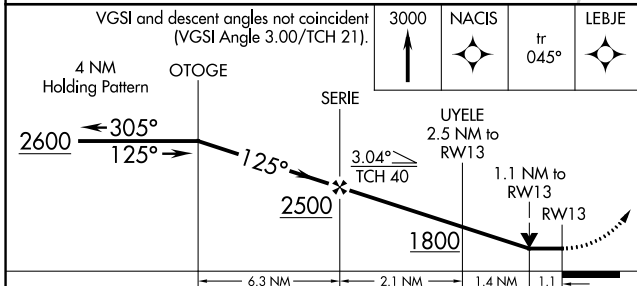
RNP APCH.	MISSED APPROACH: Climb to 3000 direct NACIS and on track 045° to LEBJE and hold.
<p>▼ Rwy 13 helicopter visibility reduction below ¼ SM NA. VDP NA when using Ohio State University altimeter setting. When local altimeter setting not received, use Ohio State University altimeter setting: increase all MDAs 100 feet; increase LNAV Cats C/D and Circling Cat C visibility ¾ SM.</p>	

ASOS 119.975	CLEVELAND APP CON * 124.2 360.65	CLNC DEL 126.8	UNICOM 122.8 (CTAF) 0
------------------------	--	--------------------------	---------------------------------



EC-2, 25 FEB 2021 to 25 MAR 2021

EC-2, 25 FEB 2021 to 25 MAR 2021



CATEGORY	A	B	C	D
LNAV MDA	1360-1 369 (400-1)		1360-1¼ 369 (400-1¼)	
CIRCLING	1480-1 487 (500-1)	1500-1 507 (600-1)	1540-1½ 547 (600-1½)	1560-2 567 (600-2)

REIL Rwy 7, 13, 25 and 31 0
MIRL Rwy 7-25 and 13-31 0