

WAAS CH 62904 W25A	APP CRS 245°	Rwy Idg TDZE Apt Elev	5000 993 993
--	------------------------	-----------------------------	---

RNAV (GPS) RWY 25

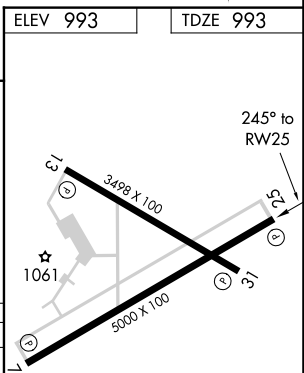
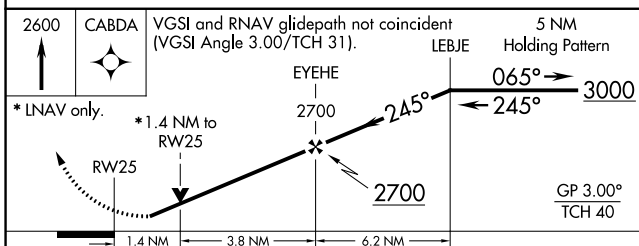
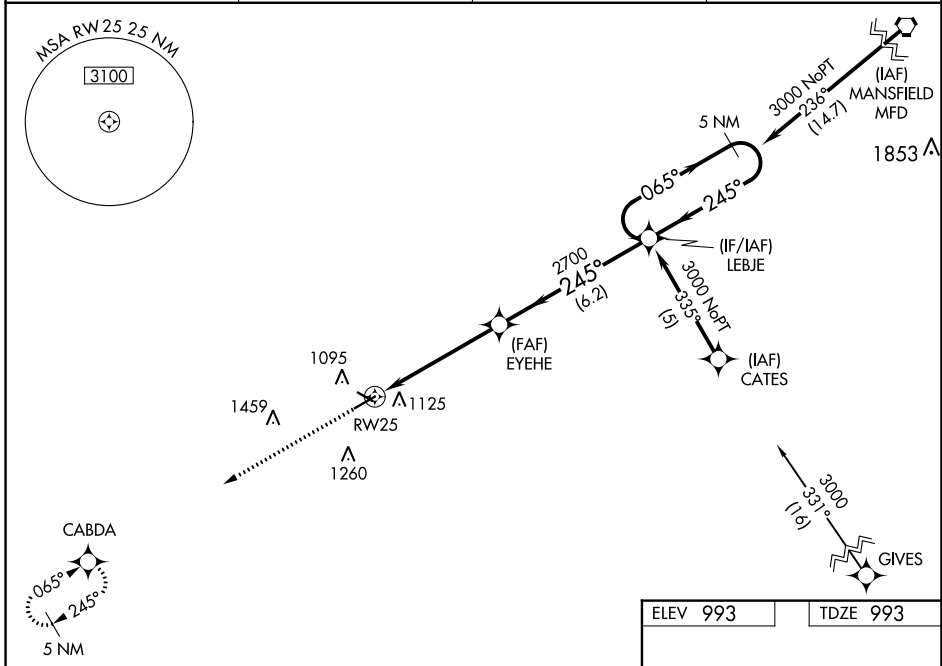
MARION MUNI (MNN)

RNP APCH.

⚠ For uncompensated Baro-VNAV systems, LNAV/VNAV NA below -16°C (4°F) or above 54°C (130°F). Baro-VNAV and VDP NA when using Ohio State University altimeter setting. Rwy 25 helicopter visibility reduction below 3/4 SM NA. When local altimeter setting not received, use Ohio State University altimeter setting and increase all DAs 87 feet and all MDAs 100 feet.

MISSED APPROACH: Climb to 2600 direct CABDA and hold.

ASOS 119.975	CLEVELAND APP CON * 124.2 360.65	CLNC DEL 126.8	UNICOM 122.8 (CTAF) 0
------------------------	--	--------------------------	---------------------------------



CATEGORY	A	B	C	D
LPV DA		1334-1¼	341 (400-1¼)	
LNAV/VNAV DA		1443-1½	450 (500-1½)	
LNAV MDA	1460-1	467 (500-1)	1460-1½	467 (500-1½)
CIRCLING	1480-1 487 (500-1)	1500-1 507 (600-1)	1540-1¾ 547 (600-1¾)	1560-2 567 (600-2)

REIL Rwy 7, 13, 25 and 31 0

MIRL Rwy 7-25 and 13-31 0

EC-2, 25 FEB 2021 to 25 MAR 2021

EC-2, 25 FEB 2021 to 25 MAR 2021