

WAAS CH <b>93604</b> <b>W07A</b>	APP CRS <b>065°</b>	Rwy Idg TDZE Apt Elev	<b>5000</b> <b>990</b> <b>993</b>
--	------------------------	-----------------------------	---

# RNAV (GPS) RWY 7

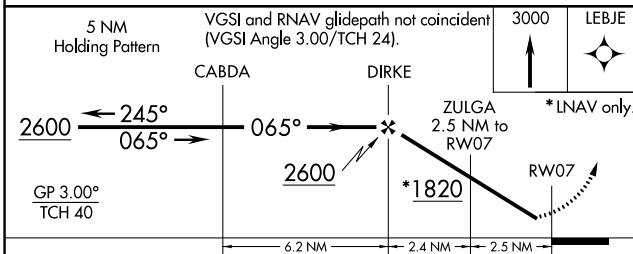
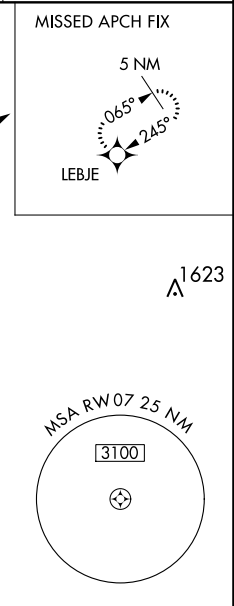
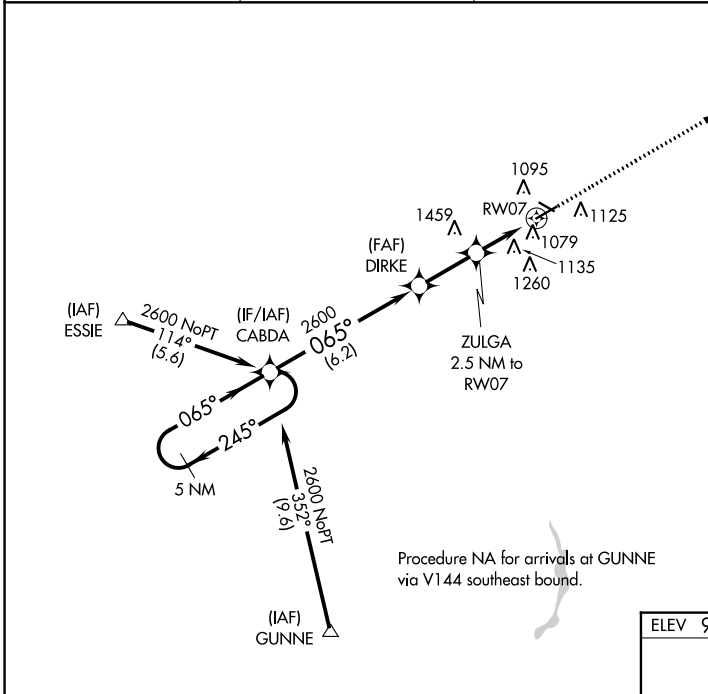
MARION MUNI (MNN)

**▼** If local altimeter setting not received, use Ohio State University altimeter setting and increase LPV DA 87 feet, LNAV/VNAV DA 195 feet, and all MDAS 100 feet.  
**▲** Baro-VNAV NA when using Ohio State University altimeter setting. For uncompensated Baro-VNAV systems, LNAV/VNAV NA below -16°C (4°F) or above 46°C (114°F). Visibility reduction by helicopters NA. DME/DME RNP-0.3 NA.

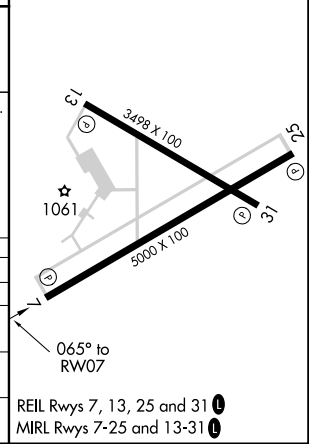
**MISSED APPROACH:**  
Climb to 3000 direct LEBJE and hold.

ASOS <b>119.975</b>	CLEVELAND APP CON * <b>124.2 360.65</b>	CLNC DEL <b>126.8</b>
------------------------	--	--------------------------

UNICOM  
**122.8 (CTAF) 0**



ELEV 993	TDZE 990
----------	----------



CATEGORY	A	B	C	D
LPV DA	1240-1 250 (300-1)			
LNAV/VNAV DA	1379-1½ 389 (400-1½)			
LNAV MDA	1440-1 450 (500-1)	1440-1¼ 450 (500-1¼)		1440-1½ 450 (500-1½)
CIRCLING	1480-1 487 (500-1)	1500-1 507 (600-1)	1540-1½ 547 (600-1½)	1560-2 567 (600-2)

EC-2, 25 FEB 2021 to 25 MAR 2021

EC-2, 25 FEB 2021 to 25 MAR 2021