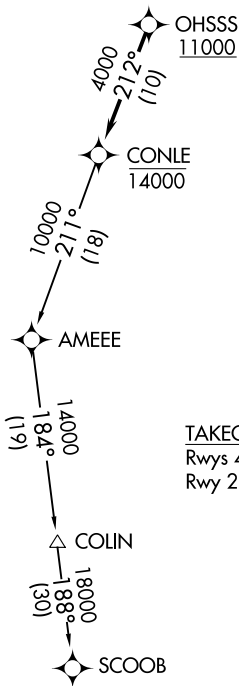


CONLE FOUR DEPARTURE (RNAV)

**TOP ALTITUDE:
ASSIGNED BY ATC**

ATIS
124.475
CLNC DEL
119.075
GND CON
119.075
EASTON TOWER ★
118.525 (CTAF)
POTOMAC DEP CON
124.55 317.425

NOTE: RNAV 1.
NOTE: DME/DME/IRU or GPS required.
NOTE: RADAR required.
NOTE: For turbojet aircraft only.



TAKEOFF MINIMUMS:
Rwys 4, 15, 33: Standard.
Rwy 22: 300-2 or standard with minimum climb
of 245' per NM to 500.

NOTE: Chart not to scale.



DEPARTURE ROUTE DESCRIPTION

Climb on assigned heading to ATC assigned altitude, for vectors to cross OHSSS at or above 11000, then on track 212° to cross CONLE at or below 14000, then on assigned transition. Expect filed altitude within 10 minutes after departure.

COLIN TRANSITION (CONLE4.COLIN)

SCOOB TRANSITION (CONLE4.SCOOB)