

LOC/DME I-FGH 109.35 Chan 30 (Y)	APP CRS 041°	Rwy Idg 4775 TDZE 58 Apt Elev 72
--	------------------------	---

ILS or LOC RWY 4

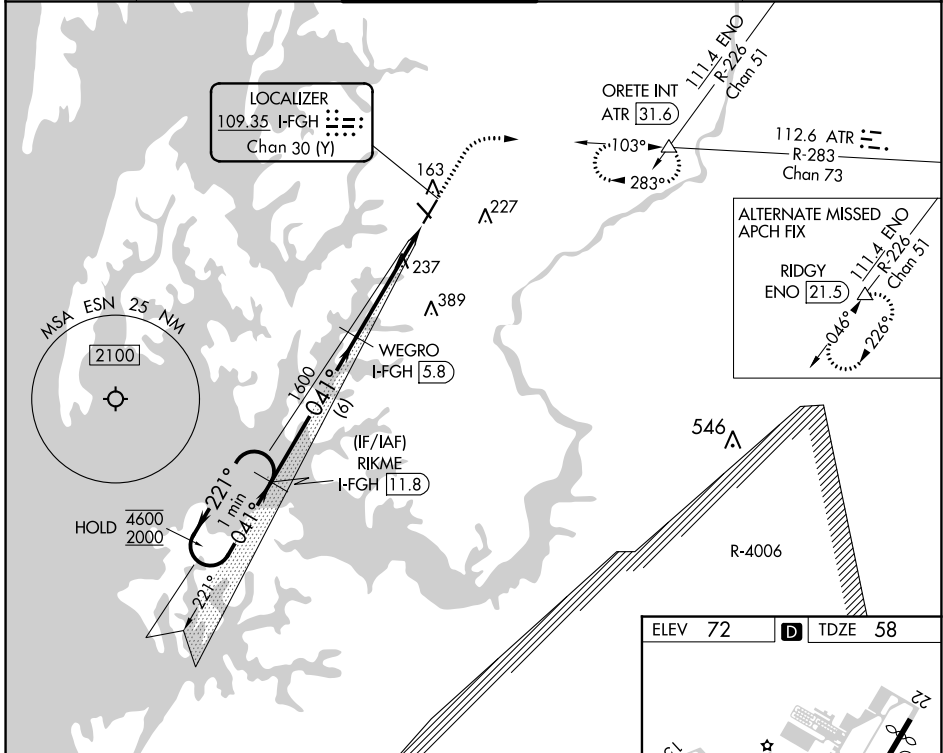
EASTON/NEWMAM FIELD (ESN)

RADAR and DME required for procedure entry. DME required for LOC only.

⚠ Circling Rwy 15, 33 NA at night. Autopilot coupled approach NA below 660.

MISSED APPROACH: Climb to 2000 on heading 041° and on ATR VOR/DME R-283 to ORETE INT/ATR 31.6 DME and hold.

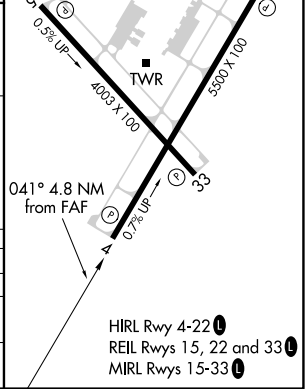
ATIS 124.475	POTOMAC APP CON 133.75 254.35	EASTON TOWER * 118.525 (CTAF) 1	GND CON 119.075	CLNC DEL 119.075
------------------------	---	---	---------------------------	----------------------------



NE-3, 25 FEB 2021 to 25 MAR 2021

NE-3, 25 FEB 2021 to 25 MAR 2021

One Minute Holding Pattern	RIKME I-FGH (11.8)	2000	ATR R-283	ORETE
4600 ← 221°	041° →	hdg 041°		△
2000		WEGRO I-FGH (5.8)	* I-FGH (2.5)	I-FGH (1)
GS 3.00° TCH 44		1600		
		6 NM	3.4 NM	1.4 NM
CATEGORY	A	B	C	D
S-ILS 4		273-3/4	215 (300-3/4)	
S-LOC 4	540-1	482 (500-1)	540-1 3/8	482 (500-1 3/8)
C CIRCLING	540-1 468 (500-1)	640-1 568 (600-1)	640-1 1/2 568 (600-1 1/2)	740-2 668 (700-2)



HIRL Rwy 4-22 1
REIL Rws 15, 22 and 33 1
MIRL Rws 15-33 1