

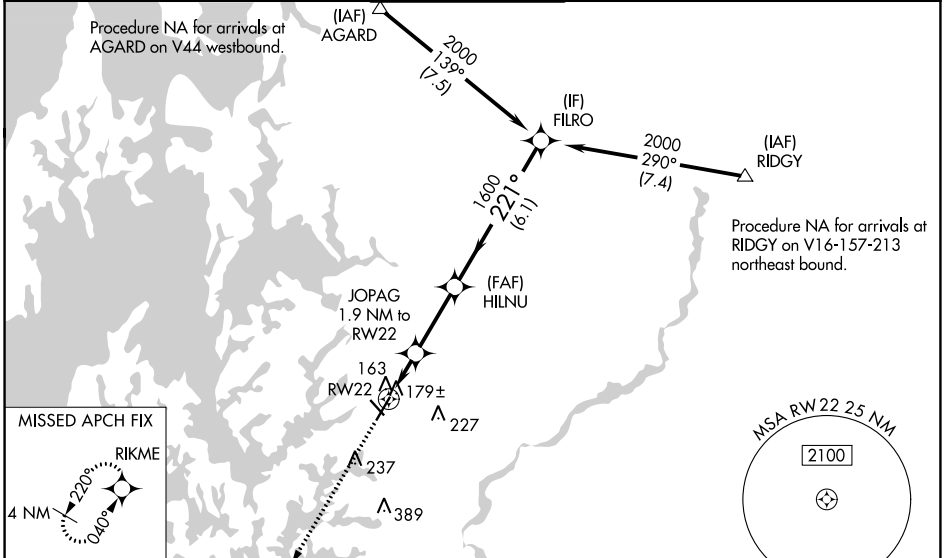
WAAS CH <b>40207</b> <b>W22A</b>	APP CRS <b>221°</b>	Rwy Idg <b>5175</b> TDZE <b>72</b> Apt Elev <b>72</b>
--	------------------------	---

# RNAV (GPS) RWY 22

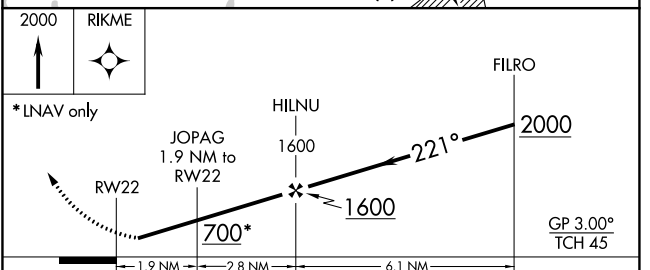
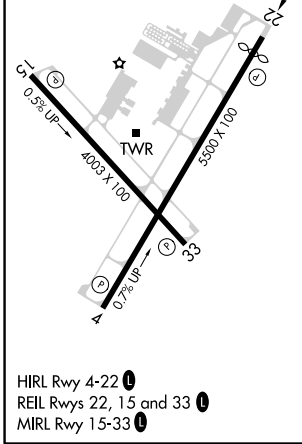
EASTON/NEWMAM FIELD (E5N)

RNP APCH.	<p>Baro-VNAV NA when using Baltimore altimeter setting. For uncompensated Baro-VNAV systems, LNAV/VNAV NA below -15°C or above 43°C. Rwy 22 helicopter visibility reduction below 3/4 SM NA. When local altimeter setting not received, use Baltimore altimeter setting and increase all DA 93 feet and all MDA 100 feet; increase LPV all Cats visibility 1/2 SM, increase LNAV/VNAV all Cats visibility 1/4 SM, and increase LNAV Cats C and D 1/4 SM.</p>	MISSED APPROACH: Climb to 2000 direct RIKME and hold.
-----------	--	---

ATIS <b>124.475</b>	POTOMAC APP CON <b>133.75 254.35</b>	<b>EASTON TOWER ★</b> <b>118.525</b> (CTAF) <b>0</b>	GND CON <b>119.075</b>	CLNC DEL <b>119.075</b>
------------------------	---	---	---------------------------	----------------------------



ELEV 72	<b>D</b>	TDZE 72
---------	----------	---------



CATEGORY	A	B	C	D
LPV DA		322-1	250 (300-1)	
LNAV/VNAV DA		362-1	290 (300-1)	
LNAV MDA		440-1	368 (400-1)	

NE-3, 25 FEB 2021 to 25 MAR 2021

NE-3, 25 FEB 2021 to 25 MAR 2021